

**NONCREDIT-SPRING 2019**



**WAUBONSEE**  
COMMUNITY COLLEGE



## PERSONAL ENRICHMENT

Professional Drone  
Pilot Preparation –  
new weekend program!  
See page 14.

Become a Wedding  
and Event Planner  
See page 13.

*Live*



**Work**

## PROFESSIONAL DEVELOPMENT

Learn about Building Teams That Work  
See page 36.

Explore Mental Health First Aid  
See page 26.



**waubonsee.edu**

# What's New!



## Small Business Development Center (SBDC)

Waubonsee's SBDC is available to meet small business owners' needs!

Get free one-on-one help or attend a workshop or class.

*See pages 38-39.*



## Professional Drone Pilot Test Preparation

Offered in partnership with the national leader in drone education, this intensive two-day program prepares you for Part 107 licensure.

*See page 14.*



## Frontline Supervisor Certification

Increase your customer satisfaction with this program consisting of 10 courses.

*See page 35-36.*



# WHAT'S INSIDE

## PERSONAL ENRICHMENT COURSES

### Live

<b>CREATIVE ARTS</b>	<b>2</b>
Art	2
Dance	3
Music	3
Photography	4
Theatre	5
<b>FITNESS AND RECREATION</b>	<b>6</b>
Fitness	6
Mind and Body	11
Recreation	11
<b>PERSONAL GROWTH AND HOME</b>	<b>12</b>
Animal Care and Training	13
Cooking	13
Hobbies and Special Interests	13
Test Preparation	12
<b>SCIENCE AND TECHNOLOGY</b>	<b>15</b>
Introductory Computer	15
Television Production	16
<b>WORLD LANGUAGES</b>	<b>16</b>
<b>KIDS AND TEENS</b>	<b>17</b>

## PROFESSIONAL DEVELOPMENT COURSES

### Work

<b>AMERICAN HEART ASSOCIATION</b>	<b>25</b>
Health Care Professionals	26
Community Members	26
Instructors	27
<b>BUSINESS AND FINANCE</b>	<b>28</b>
Bookkeeping Series	28
Paralegal	28
<b>COMPUTER SOFTWARE</b>	<b>30</b>
Computer Support	30
Database	30
Information Security	30
Office Suites	31
Spreadsheet	31
<b>HEALTH AND SAFETY</b>	<b>32</b>
Construction	32
Food Service and Sanitation	32
Health Care Professions	33
<b>LEADERSHIP</b>	<b>35</b>
<b>MANUFACTURING</b>	<b>36</b>

### SPECIAL FEATURES

Total Fitness Center	8
Unique Local Experiences	18
Trips and Tours	20
Community Events	22
Small Business Development Center	38
Workforce Innovation and Opportunity Act Funding	40
Corporate Training	41

### GENERAL INFORMATION

Courses by Start Date	42
Sugar Grove Campus Map	44
How to Read the Class Schedule	45
Registration, Payment and Refund Policies	45
Registration Form	47

# PERSONAL ENRICHMENT *Live*

## *Unique Things to See, Learn and Experience*

### CREATIVE ARTS

#### ART

##### CERAMIC ARTS: HANDBUILDING AND WHEEL THROWING

Find deep satisfaction in designing and creating your own pottery, whether you're a beginner or an advanced student of ceramics. You'll learn the best practices in handbuilding, wheel throwing, decorating and glazing, and then use the campus kiln to fire your original creations. If you're a beginner, you'll benefit from instructor Mary DeRose's reputation for careful guidance, but if you're a more advanced student, you'll delight in her balanced approach of giving pointers while allowing you to expand your skills and explore your passions. Note: Additional cost for materials. Prepared kit may be purchased at Waubonsee bookstore.

CLASS FEE: \$179

**ART807.800 (21448)**

6:00pm- 9:00pm F

CER104 DeRose

Meets between: March 1-May 3

**ART807.801 (21450)**

9:00am- 12:00pm Sa

CER104 DeRose

Meets between: March 2-May 4

##### PEN AND INK DRAWING **NEW!**

Join professional line illustrator Chris Pappas as you learn the basic techniques of drawing black and white illustrations with pen and ink. Once you've mastered the beginner skills, you'll design and complete a portrait of your own home or a beautiful nature scene. Email [communityed@waubonsee.edu](mailto:communityed@waubonsee.edu) for the complete supply list.

CLASS FEE: \$89

**ART811.600 (21392)**

6:30pm- 9:00pm W

APC158 Pappas

Meets between: Feb. 6-March 13

##### BEGINNING ITALIC CALLIGRAPHY

Who says that beautiful handwriting is a dying art? Learn italic calligraphy — the most versatile and popular of all styles — and turn any quotation into a work of art! Other uses for italic calligraphy you'll cherish for years to come include invitations, handwritten letters, and cover pages for scrapbooks. Fine art and design instructor Lauren Davies will show you what you can do with pen, ink, and a little practice! Fee includes: all materials.

CLASS FEE: \$109

**ART822.600 (21428)**

6:30pm- 8:30pm T

DWNTN257 Davies

Meets between: April 16-May 14

##### LINE AND WASH WATERCOLOR

Line and wash is a colorful, creative style of watercolor painting perfect for both beginners and experienced artists alike. Join professional artist Chris Pappas as he guides you through designing your own piece that you'll complete during the six-week course. Along the way, you'll learn basic techniques in drawing, color mixing and painting. Email [communityed@waubonsee.edu](mailto:communityed@waubonsee.edu) for the supply list

CLASS FEE: \$89

**ART831.600 (21391)**

6:30pm- 9:00pm M

APC158 Pappas

Meets between: Feb. 4-March 11

##### BEGINNING DRAWING

Learn the fundamentals of drawing in a relaxed, encouraging environment with MFA artist Andrew Blair. Working primarily in pencil and charcoal, you'll practice the principles of composition, shading, perspective and more. By the end of this six-week course you'll have the confidence and the skills needed for further study of drawing and painting. This course may be repeated multiple times for advanced practice and study. Note: Anticipate approximately \$70 investment for supplies. Supplies may be purchased at the Waubonsee Bookstore. Email [communityed@waubonsee.edu](mailto:communityed@waubonsee.edu) for supply list.

CLASS FEE: \$79

**ART836.600 (21398)**

6:30pm- 9:00pm T

WGL120 Blair

Meets between: March 26-April 30



## DANCE

### WEDDING DANCE

Make that special day even more memorable by dancing with confidence at your wedding! With over 35 years of experience in dance instruction, Patricia Ray will help get you, your wedding party and your family ready to impress at the wedding reception! This engaging course is also perfect for people who just want to learn a few useful dance moves or brush up on technique. Note: Couples only. Partners register separately. Wear hard sole shoes.

CLASS FEE: \$49

**DAN837.600 (21396)**

7:15pm- 8:30pm Th

FLD254 Ray

Meets between: April 4-May 2

### LET'S DANCE! BALLROOM, SWING, AND LATIN

Get a little taste of everything in this combination dance class that will give you confidence for any social dance occasion! With over 35 years of experience in dance instruction, Patricia Ray will help you develop your techniques of leading and following while dancing with your partner. Have fun practicing the basic moves of the waltz, foxtrot and swing, then finish off with the spicy cha-cha! A perfect class for beginners or those who want to brush up on their dance skills. Note: Couples only. Partners must register separately. Wear hard sole shoes.

CLASS FEE: \$55

**DAN898.600 (21394)**

7:15pm- 8:30pm Th

FLD254 Ray

Meets between: Jan. 17-Feb. 21

**DAN898.800 (21395)**

7:15pm- 8:30pm F

FLD254 Ray

Meets between: Jan. 18-Feb. 22

### KEEP DANCING! BALLROOM, SWING AND LATIN CONTINUED

Now that you have the basics down, take your dance moves to the next level! Experienced dance instructor, Patricia Ray, will review the basic dance steps of ballroom and Latin then progress to more advanced steps and patterns. Note: Couples only. Partners register separately. Wear hard sole shoes. Prereq: Students must know the basics of ballroom and Latin dances.

CLASS FEE: \$49

**DAN899.800 (21397)**

7:15pm- 8:30pm F

FLD254 Ray

Meets between: April 5-May 3

## MUSIC

### ELECTRONIC MUSIC ENSEMBLE

Are you an aspiring music composer? Take your music experience to the next level with this unique performance-based course. You'll be using Waubensee's recording studio facilities and equipment to develop and perform original compositions. State-of-the-art technology such as tape recorders, microphones, signal processors and computers are the "instruments" in this ensemble, and experimentation is encouraged.

Note: Two years of music experience is recommended for this course. For credit course see MUS170 in the credit schedule

CLASS FEE: \$136

**MUS886.001 (21413)**

2:00pm- 4:15pm T

VON245 Popowitch

Meets between: Feb. 19-May 14

### CLASS GUITAR I

Strum along with other beginners as you learn the basics of playing the guitar. No music experience is required for this entry-level course. You will learn how to read chords, chords symbols and musical notation in a variety of music styles. By the end of this course, you will have gained confidence playing chord progressions on a variety of guitars and in various guitar playing styles. Note: Guitar must be brought to the first class.

CLASS FEE: \$272

**MUS890.600 (21408)**

5:00pm- 6:40pm T

VON137 Dover

Meets between: Jan. 22-May 14

### CLASS INSTRUCTION IN PIANO I

If you've ever wanted to "tickle the ivories," this is your chance! No music experience is needed for this beginner level piano course. You will explore music notation, chords, and harmonization through the study of popular, folk and classical music. Join us in the electronic piano lab to make your musical dreams a reality. Note: For credit course see MUS151 in the credit schedule.

CLASS FEE: \$272 LAB FEE: \$30

**MUS891.001 (21407)**

12:30pm- 1:20pm MW

VON231 Anderson-Cordogan

Meets between: Jan. 23-May 15

*For more information on how to read this schedule, see page 45.*

## PERCUSSION ENSEMBLE

In this performance ensemble of 20th-century percussion music and world drumming, individual percussion instruments and techniques are discussed. Traditional and contemporary percussion notation are taught to enable the student to perform assigned parts. Mallet instruments (marimba, vibes, etc.) as well as pitched and nonpitched percussion instruments are used. Note: For credit course see MUS171 in the credit schedule.

Recommended Prereq: Music background.

CLASS FEE: \$126

**MUS892.001 (21425)**

11:00am- 1:15pm W

VON137 Binder

Meets between: Feb. 20-May 15

## ALL COLLEGE STEEL BAND

Explore a truly unique instrument in this entry-level steel pan ensemble. Together with other musicians, you will be performing a variety of musical styles including Caribbean, Pop and Classical. You will also be introduced to the history, construction, development and voices of the instruments, all while developing your technique on the instrument. Students are separated based on their ability and experience. The end of term will culminate with a performance concert open to the public. Note: Experience reading music is a requirement for this course. For credit course see MUS175 in the credit schedule.

CLASS FEE: \$204

**MUS893.600 (21414)**

6:00pm- 7:40pm W

VON137 Check

Meets between: Jan. 23-May 15

## JAZZ ENSEMBLE

Join other "cool cats" for this jazz performance group. You will be part of this 15 to 17-piece ensemble that specializes in swing, bebop and contemporary jazz. You will also be able to share your love of jazz with others during the end of term concert. Two years of experience with jazz music are recommended for this course. Note: For credit course see MUS160 in the credit schedule.

CLASS FEE: \$136

**MUS894.001 (21409)**

5:30pm- 7:10pm M

VON137 Binder

Meets between: Jan. 22-May 17

## ROCK MUSIC ENSEMBLE

Are you ready to rock? This jam session is open to all musicians – keyboards, guitars, percussion, horns, singers, and anyone else who loves rock music performance. You will practice rock through the ages – from its roots in the 1950s to modern day. Two years of music experience is recommended for this course. Note: For credit course see MUS162 in the credit schedule.

CLASS FEE: \$136

**MUS895.001 (21410)**

2:00pm- 4:15pm T

VON137 Dover

Meets between: Feb. 19-May 14

## CONCERT BAND

Join other music lovers for this instrumental ensemble that focuses on performance. You will practice different styles including chamber music, concert band, folk and other special combinations. The end of term will culminate in a performance open to the public! Note: Two years of music experience is recommended for this course.

CLASS FEE: \$136

**MUS896.001 (21411)**

11:00am- 12:40p F

VON137 Lathan

Meets between: Jan. 25-May 17

## VOCAL ENSEMBLE:

### WAUBONSEE CHORALE

Join The Waubonsee Chorale in song! We are a lively group that practices and performs madrigals, spirituals and other traditional choral music forms. It is open to all students and community residents, and the term will culminate with a performance open to the public. Note: For credit course see MUS166 in the credit schedule.

CLASS FEE: \$136

**MUS898.001 (21412)**

12:30pm- 1:45pm TTh

VON125 Schmidt

Meets between: Jan. 22-May 16

## PHOTOGRAPHY

### BEGINNING PHOTOGRAPHY I

Discover the fundamentals of camera settings, composition, and exposure and some of the technical aspects of photography such as selecting memory cards, transferring images to PC/Mac and backing up your photos. You'll gain a full understanding of how to use depth of field, resolution, white balance, color adjustment, compression and file formats. Note: Bring your own DSLR camera to class.

CLASS FEE: \$99

**PIC802.600 (21399)**

6:00pm- 9:00pm M

APC195 Smith

Meets between: Jan. 7-Feb. 11

### BEGINNING PHOTOGRAPHY II

Dive deeper into many of the concepts from Beginning Photography I. Assignments build your skills in composition control, exposure, lighting and more! Professional photographer Mike Smith will introduce techniques to grow your skill set and offer helpful critiques. Note: Bring your own DSLR camera to class.

CLASS FEE: \$99

**PIC804.600 (21400)**

6:00pm- 9:00pm M

APC195 Smith

Meets between: Feb. 18-March 25

## INTERMEDIATE PHOTOGRAPHY **NEW!**

Take your photography skills to the next level while you master photo composition, perfect your timing, and learn to “chase the light”. You’ll develop your signature style with assignments that will put your creativity to the test. Professional photographer Mike Smith will introduce key techniques to grow your skill set and offer helpful critiques of your work.

Note: Bring your own DSLR camera to class.

CLASS FEE: \$99

**PIC824.600 (21401)**

6:00pm- 9:00pm M

APC195 Smith

Meets between: April 1-May 6

**PIC824.601 (21496)**

6:30pm- 9:30pm W

TBA Smith

Meets between: Jan. 9-Feb. 13

## THEATRE

### IMPROV FOR BEGINNERS

Improv is fun and good for you too! Exercise your imagination and explore your creative potential with experienced improv performer and instructor, Doug Grier. Through improv games and scene work you’ll learn the ten principles of short-form improv comedy and the techniques that can bring a scene to life. Whether you’re a budding performer, an actor or just want to improve your communication and observational skills, you’ll benefit from this opportunity to shine.

CLASS FEE: \$79

**THE800.600 (21491)**

7:00pm- 9:00pm T

TBA Grier

Meets between: March 19-April 23



## New Fitness Courses

### Osteoporosis Prevention Workshop

Fifty-five percent of people over 50 have low bone density putting them at greater risk for hip fractures. Learn how you can prevent falls and fractures by increasing strength and improving flexibility and balance.

### Nutrition Series – Optimize your Results

Are you getting the results you want from your workouts? If not, the answer may be found in your nutrition. This three-session nutrition series will open your eyes to an entirely new way of looking at food.

*For course listings see pages 7 and 9.*

FITNESS AND RECREATION

FITNESS

TOTAL FITNESS CENTER: MEMBERSHIPS

Explore your fitness options at Waubensee's Total Fitness Center. We feature CardioTheater – an entertainment center that makes exercise fun; a free weight area; Cybex Eagle strength systems; and the latest in cardiovascular equipment. Highly-skilled staff assist you with your exercise program and answer fitness-related questions. Call the fitness center at (630) 466-2530 for registration information and to schedule an orientation. Note: The fitness center is open to anyone 16 years of age or older.

YOUTH PERSONAL TRAINING (AGES 12-15)

Five (5) 60-minute personal training sessions.  
CLASS FEE: \$205

**FIT700.701 (21328)**  
TBA  
ERK126 Anderson  
Meets between: Jan. 1-May 17



**BODY FAT ANALYSIS**  
Weight alone is a deceptive indicator of body composition. Determine your percentages of body water, fat and lean mass by electrical impedance and have trained staff explain your results. Call (630) 466-2530 to schedule your appointment.  
CLASS FEE: \$12

**FIT806.700 (21319)**  
TBA  
ERK126 Anderson  
Meets between: Jan. 1-May 17

**SMALL GROUP TRAINING**  
Enjoy the variety of programming and social energy that comes from working out with others. Professional instructors will guide, motivate and keep you accountable. This class includes an eight-week Total Fitness Center membership.  
CLASS FEE: \$249

**FIT816.001 (21373)**  
6:00am- 7:00am MWF  
ERK126 Anderson  
Meets between: Jan. 21-March 15

**FIT816.002 (21374)**  
8:00am- 9:00am MWF  
ERK126 Anderson  
Meets between: Jan. 21-March 15

**FIT817.001 (21375)**  
6:00am- 7:00am MWF  
ERK126 Anderson  
Meets between: March 18-May 10

**FIT817.002 (21376)**  
8:00am- 9:00am MWF  
ERK126 Anderson  
Meets between: March 18-May 10

**CHAIR YOGA**  
Learn and practice yoga safely. Using a chair provides additional support and stability. Chair yoga is great for beginners and those with balance or strength challenges.  
CLASS FEE: \$79

**FIT822.001 (21377)**  
1:30pm- 2:15pm W  
ERK213 Anderson  
Meets between: Jan. 23-March 13

**FIT823.001 (21378)**  
1:30pm- 2:15pm W  
ERK213 Anderson  
Meets between: March 20-May 8

**HIIT STRENGTH**  
Take your strength to the next level. This high-intensity interval workout targets full-body strength and challenges you to move outside your comfort zone. Each 30-minute class is different—and exhilarating. You'll be obsessed with the results!  
CLASS FEE: \$104

**FIT830.001 (21381)**  
7:00am- 7:30am TTh  
FLD254 Anderson  
Meets between: Jan. 22-March 14

**FIT832.001 (21382)**  
7:00am- 7:30am TTh  
FLD254 Anderson  
Meets between: March 19-May 9



## OSTEOPOROSIS PREVENTION WORKSHOP

Fifty-five percent of people over 50 have low bone density putting them at greater risk for hip fractures. This workshop presents the research and introduces you to yoga and weight bearing interventions specific to building strong bones. Learn how you can prevent falls and fractures by adding strength and improving flexibility and balance.

**FIT840.001 (21379)**  
1:30pm- 2:30pm M  
ERK213 Anderson  
Meets on: May 13

## FALL PROOF!

Reduce your risk of falls. Learn exercises to increase your strength and improve your overall balance and mobility. Classes challenge your balance in a safe environment. Fall Proof is an effective program that promotes healthy, active lifestyles.

CLASS FEE: \$92

**FIT845.001 (21383)**  
1:30pm- 2:30pm M  
ERK213 Anderson  
Meets between: Jan. 21-March 11

**FIT855.001 (21384)**  
1:30pm- 2:30pm M  
ERK213 Anderson  
Meets between: March 18-May 6

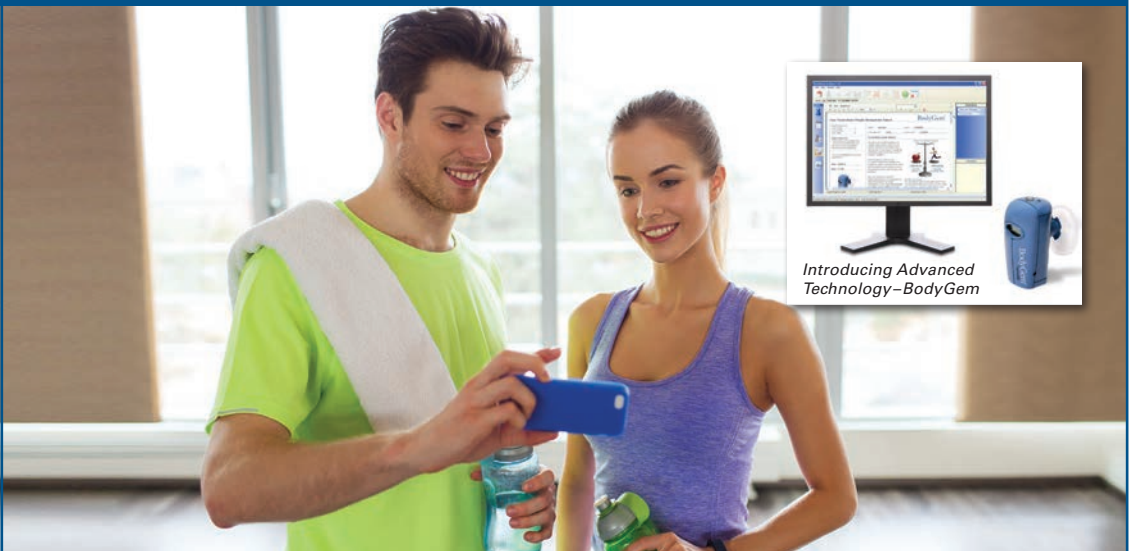
## METABOLISM MATTERS

Weight management success is just a simple measurement away! With BodyGem, a device used to measure your metabolism, you can easily and quickly determine your resting metabolic rate. Your metabolic measurement can then be used to determine an accurate daily calorie target designed to best assist you with meeting your personalized weight management goals. Call the Total Fitness Center at (630) 466-2530 for more information and to schedule an appointment. Note: BodyGem includes a metabolic measurement, a printed report of calorie budgets and a review of the results.

CLASS FEE: \$39

**FIT860.700 (21320)**  
TBA  
ERK126 Anderson  
Meets between: Jan. 1-May 17

# Metabolism Matters



Introducing Advanced  
Technology—BodyGem

## Weight management is a simple measurement away with BodyGem.

Find your metabolic blueprint with BodyGem – a device used to measure your metabolism. Learn precisely how many calories your body needs to meet your weight management goal.



**JOIN OUR**

# TOTAL FITNESS CENTER

*Waubonsee's Total Fitness Center, located on the Sugar Grove campus, is dedicated to fitness excellence. Feel the energy, achieve results and enjoy the experience. Open to anyone 16 years of age or older, our facility is a great place to work out, whether you purchase a membership or just want to take classes.*

## PROFESSIONAL STAFF

Our experienced fitness experts are committed to assisting members through all phases of exercise. The fitness specialists are nationally certified personal trainers with college degrees.

### Join Now!

*The Total Fitness Center offers a variety of membership options.*



## WE OFFER

- Personal Training
- Full Range of Cardiovascular Equipment, Strength Training Systems and Free Weights
- Cardio Theater Entertainment Center
- Free Wi-Fi
- Locker Rooms with Showers
- Complimentary Workout Towels
- Indoor Running Track
- Open Gym

## OUR SERVICES

*In addition to memberships, we provide the following services (membership not required):*

### **Movement Screening and Exercise Plan - Fundamentals First**

Start with an evaluation of your movement patterns and end with a customized exercise plan.

**\$59**

### **Metabolism Matters**

Find out how you can make a plan for weight management with BodyGem.

**\$39**

### **Body Fat Analysis**

Determine your percentages of body water, fat and lean mass.

**\$12**

## MOVEMENT SCREENING AND EXERCISE PLAN - FUNDAMENTALS FIRST

Are you looking to achieve higher levels of fitness and performance? Start with an evaluation of your movement patterns; end with a customized exercise plan designed to balance and improve your physical ability. Call the Total Fitness Center at (630) 466-2530 to schedule your appointment. CLASS FEE: \$59

**FIT863.700 (21318)**  
TBA

ERK126 Anderson  
Meets between: Jan. 1-May 17

## NUTRITION SERIES - OPTIMIZE YOUR RESULTS

Are you getting the results you want from your workouts? If not, the answer may be found in your nutrition. Learn how your body responds to carbohydrates, fat and protein, how to calculate your personal nutrition recipe for the fit body you seek and discover the truths about fad diets. This three-session nutrition series will open your eyes to an entirely new way of looking at food. Don't miss it. CLASS FEE: \$39

**FIT864.601 (21380)**  
7:00pm- 8:00pm Th

ERK213 Anderson  
Meets between: Feb. 21-March 7

## TAI CHI

Center yourself as you become aware of your own energy while relaxing your mind and strengthening your body. Tai Chi, an ancient form of meditative exercise, helps you meet day-to-day challenges by harmonizing mind and body.

CLASS FEE: \$79

**FIT882.001 (21386)**  
9:00am- 9:45am F  
FLD254 Anderson  
Meets between: Jan. 25-March 15

**FIT883.001 (21387)**  
9:00am- 9:45am F  
FLD254 Anderson  
Meets between: March 22-May 10

## OUTDOOR TAI CHI

Center yourself in nature. Tai Chi, an ancient form of meditative exercise, helps you meet day-to-day stress by harmonizing mind and body. Classes meet outdoors, weather permitting.

CLASS FEE: \$59

**FIT888.600 (21385)**  
5:00pm- 5:45pm T  
ERK126 Anderson  
Meets between: April 9-May 14

## ZUMBA

Take the "work" out of workout by mixing low-intensity and high-intensity moves for an interval-style, calorie-burning dance fitness party. Super effective! Super fun!

CLASS FEE: \$136

**FIT827.600 (21361)**  
5:00pm- 5:50pm TTh  
FLD254 Gunderson  
Meets between: Jan. 22-May 16  
Class will not meet March 19 and 21.

# TOTAL FITNESS CENTER MEMBERSHIPS

The Total Fitness Center offers a variety of membership options. Choose the one that works for you. Make sure to ask about our same household discounts. Call (630) 466-2530 for registration information and to schedule an orientation.

<b>Daily</b> ERK126	<b>\$8</b>
<b>1-Month</b> ERK126	<b>\$35</b>
<b>3-Month</b> FIT800.700 ERK126	<b>\$89</b> (11253)
<b>6-Month</b> FIT802.700 ERK126	<b>\$169</b> (11256)
<b>Year</b> FIT804.700 ERK126	<b>\$299</b> (11257)

# FITNESS AND RECREATION

## PERSONAL TRAINER CERTIFICATION COURSE

Get all the information and training you need to become a Certified Personal trainer. This comprehensive course offered through World Instructor Training Schools (W.I.T.S.) gives you the educational knowledge and practical skills required for a long-lasting career in the fitness industry. W.I.T.S. is an accredited and internationally recognized certifying body that is known and respected by fitness experts and employers. Textbook required. CLASS FEE: \$689

### In-Person Instruction

LIVE classroom instruction and in-depth, hands-on practical labs to master essential career skills.

**FIT885.600 (21464)**  
6:00pm- 9:00pm Th  
FLD252 Anderson

9:00am- 12:00pm Sa  
ERK126 Anderson  
Meets between: March 28-April 27

### Online Hybrid Instruction

Online material along with in-depth, hands-on practical labs to master essential career skills.

**FIT885.950 (21465)**  
9:00am- 12:00pm Sa  
ERK126 Anderson  
Meets between: March 30-April 27



## CARDIO KICKBOXING

This class combines boxing, martial arts and cardio. Jab, hooks, uppercuts and kicks performed rhythmically to music get you a leaner body and a healthier state of mind. CLASS FEE: \$136

**FIT894.001 (21330)**  
2:00pm- 2:50pm TTh  
FLD254 Expert  
Meets between: Jan. 22-May 16  
Class will not meet March 19 and 21.

**YOGA** Hatha Yoga focuses on the union of mind, body and breath through asana practice. The poses enhance muscular strength, flexibility, energy, concentration and relaxation. CLASS FEE: \$136

**FIT892.001 (21363)**  
11:00am- 12:15pm TTh  
FLD254 Expert  
Meets between: Jan. 22-May 16  
Class will not meet March 19 and 21.

**FIT892.600 (21364)**  
5:00pm- 5:50pm MW  
FLD254 Expert  
Meets between: Jan. 23-May 15  
Class will not meet March 18 and 20.

## WOMEN ON WEIGHTS

This small group strength class produces optimum results in a minimal amount of time. Build stronger bones, improve muscle strength and increase your energy. CLASS FEE: \$96

**FIT874.001 (21369)**  
4:45pm- 5:15pm MW  
ERK213 Anderson  
Meets between: Jan. 21-March 13

**FIT874.002 (21370)**  
4:45pm- 5:15pm TTh  
ERK213 Anderson  
Meets between: Jan. 22-March 14

**FIT874.601 (21371)**  
7:00pm- 7:30pm MW  
ERK213 Anderson  
Meets between: Jan. 21-March 13

**FIT874.602 (21372)**  
6:15pm- 6:45pm TTh  
ERK213 Anderson  
Meets between: Jan. 22-March 14

**FIT877.001 (21365)**  
4:45pm- 5:15pm MW  
ERK213 Anderson  
Meets between: March 18-May 8

**FIT877.002 (21366)**  
4:45pm- 5:15pm TTh  
ERK213 Anderson  
Meets between: March 19-May 9

**FIT877.601 (21367)**  
7:00pm- 7:30pm MW  
ERK213 Anderson  
Meets between: March 18-May 8

**FIT877.602 (21368)**  
6:15pm- 6:45pm TTh  
ERK213 Anderson  
Meets between: March 19-May 9

## NORDIC WALKING - WALKING IS GOOD, NORDIC WALKING IS BETTER!

Nordic Walking is a great total body workout for anyone interested in a fun physical activity with maximum health benefits. This low-stress, easy-to-master workout is fantastic for weight loss and great for your body and mind. Keep fit, toned and healthy at any age. To sign up for your 30-minute private session with a certified Nordic Walking instructor, please call the Total Fitness Center (630) 466-2530. Poles are provided. CLASS FEE: \$29

**FIT865.700 (21317)**  
TBA  
ERK126 Anderson  
Meets between: Jan. 1-May 17



## MIND AND BODY

### HATHA YOGA FOR BEGINNERS

Experience the benefits of Hatha Yoga. Firm and tone your body while learning how to reduce stress, improve balance, flexibility and concentration. Designed for those new to Hatha Yoga, you will learn specific postures in combination with controlled breathing, as well as how to focus on breathing and relaxation techniques. Wear loose, comfortable clothing and bring an exercise mat.

CLASS FEE: \$49

**MNB801.600 (21472)**  
8:00pm- 9:00pm W  
FLD254 Van Gieson  
Meets between: Jan. 16-Feb. 20

### HATHA YOGA CONTINUED

Hatha Yoga is the slow and deliberate stretching of muscles and stimulation of inner organs. One way to think of Hatha Yoga is the union occurring between mind, body and spirit. Continue your practice of Hatha Yoga and refine your techniques. Designed for those who have taken Hatha Yoga for Beginners or have a similar level of experience. This class can be repeated as many times as desired.

CLASS FEE: \$49

**MNB803.600 (21473)**  
8:00pm- 9:00pm W  
FLD254 Van Gieson  
Meets between: Feb. 27-April 3

**MNB803.601 (21474)**  
8:00pm- 9:00pm W  
FLD254 Van Gieson  
Meets between: April 10-May 15



### DISCOVER REIKI HEALING NEW!

Join Reiki Master Claudio Ruiz for this introductory session to explore the benefits of this hands-on healing therapy. This ancient practice uses personal energy flow to help relieve spiritual imbalances, daily stresses, and to stimulate relaxation. Experience the benefits for yourself and discover if Reiki is right for you.

CLASS FEE: \$39

**MNB834.800 (21478)**  
9:30am- 11:30am Sa  
FLD252 Expert  
Meets on: March 9

**MNB834.801 (21479)**  
9:30am- 11:30am Sa  
DWNTN341 Expert  
Meets on: March 30

## RECREATION

### HORSEMANSHIP I

Horsemanship I is for the beginning or inexperienced rider and includes English riding (Saddleseat), grooming, leading, saddling and bridling. Students must have shoes (no slip on shoes) with hard soles and low heels for riding, long pants, riding or bike helmet, tee shirts or sweatshirts (no tank tops). Note: Weight restriction of under 160 lbs. per stable requirements. For credit course see KPE108 in the credit schedule.

CLASS FEE: \$258

**REC892.600 (21405)**  
8:00pm- 9:40pm T  
HUNT Expert  
Meets between: March 26-May 14

### HORSEMANSHIP II

Horsemanship II is a continuation of skills learned in Horsemanship I, only more in-depth. Riders work on diagonals, simple figure work and horse psychology. Note: Maximum weight limit: 160 lbs., per stable requirements. For credit course see KPE109 in the credit schedule.

Prereq: Consent of instructor.  
CLASS FEE: \$258

**REC893.600 (21406)**  
8:00pm- 9:40pm Th  
HUNT Expert  
Meets between: March 28-May 16

*For more information on how to read this schedule, see page 45.*

PERSONAL  
GROWTH AND  
HOME

TEST PREPARATION

PRACTICE MAKES PERFECT:  
TRY THE ACT TEST

Are you feeling apprehensive about the upcoming ACT? Let an experienced instructor tell you what to expect and how to best prepare for this important exam! You'll take home tips, techniques and test-taking strategies to help you feel comfortable and confident on test day. You'll even get to practice taking an official, retired paper-and-pencil exam in a timed setting – exactly like regular test day. In just two sessions, you'll receive a results report with a breakdown of your strengths and weaknesses so you'll have a game plan to prepare for test day. Score! Note: Bring an ACT- approved calculator ([www.act.org](http://www.act.org)) and two #2 pencils to this class.

CLASS FEE: \$69

**TST803.800 (21502)**

9:00am- 12:30pm Sa

TBA Expert

Meets between: March 30-April 6



RAISE YOUR SCORE - ACT  
MATH AND SCIENCE

Prepare for the ACT Math and Science sections in this course focused on key algebra, geometry, and trigonometry concepts as well as data analysis and interpretation in science. You'll also gain valuable problem-solving skills and strategies proven to assist you in working through problems and responding when you are unsure of the correct answer. Textbook is required for this course and may be purchased at the Waubonsee Bookstore. Email [communityed@waubonsee.edu](mailto:communityed@waubonsee.edu) for the title. Come prepared to each class with a notebook and pencil/pen and an ACT-approved calculator ([www.act.org](http://www.act.org)).

CLASS FEE: \$139

**TST806.800 (21501)**

10:00am- 11:45am Sa

TBA Expert

Meets between: March 2-March 23

RAISE YOUR SCORE - ACT  
ENGLISH AND READING

Prepare for the English and Reading sections of the ACT in this course filled with authentic ACT practice questions and tests. You'll review crucial subject matter tested on the ACT and learn strategies proven to help you when you are unsure of the correct answer. Textbook is required for this course and may be purchased at the Waubonsee Bookstore. Email [communityed@waubonsee.edu](mailto:communityed@waubonsee.edu) for the title. Come prepared to each class with a notebook and pencil/pen.

CLASS FEE: \$139

**INT807.800 (21500)**

8:00am- 9:45am Sa

TBA Expert

Meets between: March 2-March 23

PRACTICE MAKES PERFECT:  
TRY THE SAT (AGES 15 AND UP)

Are you feeling apprehensive about the new SAT? Let an experienced instructor tell you what to expect and how to best prepare for this important exam! You'll take home tips, techniques and test taking strategies to ensure you feel comfortable and confident on test day. You'll even get to practice taking an official, retired paper-and-pencil exam in a timed setting – exactly like regular test day. In just two sessions, you'll receive a results report with breakdown of your strengths and weaknesses so you'll have a game plan to prepare for test day. Score!

Note: Bring an SAT-approved calculator ([www.sat.org](http://www.sat.org)) and two #2 pencils to this class.

CLASS FEE: \$69

**TST820.800 (21499)**

9:00am- 12:30pm Sa

TBA Expert

Meets between: Feb. 9-Feb. 16

RAISE YOUR SCORE - SAT  
WRITING AND LANGUAGE

Prepare for the SAT Writing and Language sections in this focused course filled with authentic practice problems and tests. You'll review the crucial subject matter tested on the SAT and learn strategies prove to help you when you are unsure of the correct answer. Note: Textbook is required for this course and may be purchased at the Waubonsee Bookstore. Email [communityed@waubonsee.edu](mailto:communityed@waubonsee.edu) for the title. Come prepared to each class with a notebook and pencil/pen.

CLASS FEE: \$139

**TST821.800 (21497)**

8:00am- 9:45am Sa

TBA Expert

Meets between: Jan. 12-Feb. 2

## RAISE YOUR SCORE - SAT MATH

Prepare for the SAT Math sections in this course focused on pre-algebra, algebra, geometry, trigonometry, and data analysis. You'll also gain valuable problem-solving skills and strategies proven to assist you in working through problems and responding when you are unsure of the correct answer. Textbook is required for this course and may be purchased at the Waubonsee Bookstore. Email [communityed@waubonsee.edu](mailto:communityed@waubonsee.edu) for the title. Come prepared to each class with a notebook and pencil/pen and an SAT approved calculator ([www.sat.org](http://www.sat.org)).

CLASS FEE: \$139

**TST822.800 (21498)**

10:00am- 11:45am Sa

TBA Expert

Meets between: Jan. 12-Feb. 2

## ANIMAL CARE AND TRAINING

### BEGIN YOUR CAREER AS A PROFESSIONAL DOG TRAINER II NEW!

Continue to expand your expertise and gain experience towards your Certification Council for Professional Dog Trainers (CCPDT) certification. You will practice communicating with pet owners and potential clients, explore the variables that can influence canine behavior, dive into safety issues that professionals should always keep in mind. Extensive test prep and practice will also prepare you to take the CCPDT certification exam at the conclusion of the course.

Note: You will need to bring a dog to the hands-on portion of the course. Dogs will not be permitted on campus for classroom sessions. CLASS FEE: \$995

**PET803.600 (21404)**

6:00pm- 8:00pm M

OVERMN Expert

6:00pm- 8:00pm Th

BDE105 Expert

Meets between: Jan. 17-May 6

## COOKING

### COOKING 101

No more take-out! In this very popular class you'll learn the basics of cooking and shopping. Begin by reviewing what staples should be in your pantry and how to develop easy menus for every day of the week. Then learn how to choose and use knives, pots and pans, and other kitchen equipment. Lastly, develop new skills with basic cooking methods such as poaching, sautéing, broiling and pan frying! Fee includes all supplies. Note: Classes are held at Oswego High School (4250 Rt. 71, Oswego); enter through Door #38, classroom 189.

CLASS FEE: \$105

**EAT803.600 (21415)**

6:30pm- 8:30pm T

OHS189 Expert

Meets between: Feb. 19-March 12

### COOKING 102

Turn up the heat in the kitchen with delicious menu ideas for your family and guests! Learn how to plan, budget, and execute delicious yet simple meals. Make ordinary ingredients extraordinary and discover additional techniques such as the preparation of stocks, soups and sauces. While you're at it, learn about spices, vegetables, starches, convenience products, nutrition and use of kitchen tools. Fee includes all supplies.

Note: Classes are held at Oswego High School (4250 Rt. 71, Oswego); enter through Door #38, classroom 189. Prereq: Cooking 101 or equivalent cooking experience.

CLASS FEE: \$115

**EAT804.600 (21416)**

6:30pm- 8:30pm T

OHS189 Expert

Meets between: March 26-April 16

## HOBBIES AND SPECIAL INTERESTS

### BECOME A CERTIFIED WEDDING AND EVENT PLANNER

Becoming a certified wedding and event planner requires business, networking and client relationship management skills. In partnership with the Loveevity Wedding Planning Institute, this program covers the fundamentals of planning, orchestrating and delivering social events as well as owning and operating a successful wedding and event planning business - all taught by experienced professionals in the event planning industry. From weddings and anniversaries to birthdays and baby showers, the detailed curriculum teaches clear and concise formulas for detailing the personal and professional aspects of any social event. Fee Includes: Course materials, online resource center, textbook, certificate exam fee and certification designation. Note: For more information on this certification program call Community Education at (630) 466-2360.

CLASS FEE: \$995

**SEV801.600 (21390)**

6:30pm- 9:30pm Th

APC190 Expert

Meets between: Feb. 7-May 9

# PERSONAL GROWTH AND HOME

## PROFESSIONAL DRONE PILOT TEST PREPARATION **NEW!**

Join professional unmanned aircraft pilots from DART Drones, the national leader in drone education, in this two-day course that prepares you for Part 107 Drone Pilot licensure. Spend a day in the classroom while you gain all the necessary knowledge to pass your Part 107 test, including understanding relevant laws, airspace classifications, navigation, and more. Then, get hands-on while you spend some time flying patterns, practicing take off, and landing while using the provided unmanned aircraft. Full access to the DART Drones catalog of online courses is also included! Registration for this course will close one month prior to the start date.

CLASS FEE: \$1,199

**FLY803.800 (21393)**  
9:00am- 4:30pm SaSu  
PLANO111 Staff  
Meets between: April 27-April 28



## GENEALOGY 101

Have you thought of starting your family tree, but don't know where to begin? Uncover new and exciting information about your ancestors by learning how to record what you already know! Instructor and soon to be certified genealogist, Carrie Swift, has been doing genealogy for many years. You'll learn how to organize your family documentation, interview living relatives, research effectively and locate physical repositories. You'll also become familiar with free websites used for research and building family trees. Come to class with a list of ancestors you already know! Note: Computers will be used in class. Basic computer knowledge is recommended for this class.

CLASS FEE: \$59

**HBY840.600 (21442)**  
6:30pm- 8:30pm T  
HCC101 Swift  
Meets between: April 23-May 14



## READING THE STARS: INTRODUCTION TO ASTROLOGY **NEW!**

Taurus. Cancer. Virgo. Aquarius. Have you ever wondered what these signs mean? Or how the position of stars and other celestial bodies influences the person that we become? Claudio Ruiz will share detailed information about each star sign, and you'll see how using Astrology can maximize your full potential.

CLASS FEE: \$59

**MNB884.600 (21480)**  
6:00pm- 8:00pm W  
BDE103 Expert  
Meets between: Jan. 30-Feb. 27

## GET HOOKED! CROCHET BASICS

Learning to crochet is not as difficult as it appears. With over 35 years of experience, your instructor can help you begin to crochet in just four weeks. You'll be introduced to basic crochet techniques in a step-by-step easy process. Simple projects will be available for practice to build confidence while learning the six basic stitches including: slip-stitch, chain, single crochet, half-double crochet, double crochet and triple crochet. Fee includes basic starter materials. Additional materials must be purchased separately.

CLASS FEE: \$59

**SEW806.600 (21426)**  
6:30pm- 8:30pm T  
DWNTN257 Davies  
Meets between: Feb. 19-March 12

## STAY HOOKED! CROCHET CONTINUED

You've mastered the first six stitches of crochet and are now ready to move forward! It's time to learn about different patterns and how they are read. Begin to crochet from a starting chain in order to practice filet crochet and edging. You'll also be taught to crochet in the round to learn motifs. The picot will be a challenge no longer! Fee includes basic starter materials. Additional materials must be purchased separately.

Prereq: Get Hooked! Crochet Basics or equivalent crocheting experience.

CLASS FEE: \$59

**SEW834.600 (21427)**  
6:30pm- 8:30pm T  
DWNTN257 Davies  
Meets between: March 19-April 9



## SCIENCE AND TECHNOLOGY

### EXPLORE THE STARS WITH YOUR TELESCOPE **NEW!**

Did you get a telescope for Christmas or have one gathering dust in a closet? Have you always planned on getting it out one day, but never quite figured out how to use it? Learn about the different types of popular telescopes and how to use them. In addition, learn about which accessories are helpful and worth the extra expense. Discover how you can get the most out of your telescope and what you can expect to see. Feel free to bring your telescope to class.

CLASS FEE: \$19

**SKY831.800 (21475)**

7:00pm- 9:00pm F  
BDE105 Davy

Meets on: April 12

## INTRODUCTORY COMPUTER

### COMPUTERS 101

New to computers? Take part in this relaxed, hands-on class and learn keyboard and mouse skills. Find out about the parts of a computer and everything that goes along with it, as well as computer terminology. Learn how to organize and find items on your computer. Surf the Internet and discover interesting websites. Get an overview of Microsoft Office to see what you can do with it. Follow this class with Microsoft Office at Home. Note: Please come to class prepared with your X-number and password. For more information about the specific content of this course contact the Community Education department at (630) 466-2360.

CLASS FEE: \$69

**INT804.600 (21440)**

6:30pm- 8:30pm T  
HCC101 Swift

Meets between: Feb. 12-March 5

### HOW TO SELL YOUR USED TREASURES **ONLINE NEW!**

You've cleaned out the basement, now learn how to turn all those unwanted items into cash. Learn how and where to sell for maximum profit! Of course, eBay is an option, but there are many more online auctions and listing sites available to you as well. Bring an item to class and get hands-on practice in how to research, list, sell and even ship properly.

CLASS FEE: \$49

**INT809.600 (21424)**

6:30pm- 8:30pm Th  
HCC103 Expert

Meets between: March 21-April 11

### MICROSOFT OFFICE AT HOME

Join us for this relaxed, hands-on six-week course. Start with MS Word to create basic documents then learn to use backgrounds, borders, pictures and bullets to create an eye-catching flier. Master tabs, tables, columns, page breaks, headers, footers, and much more! Next, learn the basics of MS Excel by creating a sample budget spreadsheet, using basic formulas, sorting and more. Finally, discover what you can do with an MS PowerPoint presentation! An experienced instructor in computers and technology, Carrie Swift, will lead this class at a comfortable pace for students. Note: Please come to class prepared with your X-number and password.

CLASS FEE: \$79

**INT845.600 (21441)**

6:30pm- 8:30pm TTh  
HCC101 Swift

Meets between: March 26-April 11



## TAKE THE FEAR OUT OF TECHNOLOGY

*Our noncredit courses help you to develop practical, everyday skills and introduce you to cutting edge technology.*

- Computers 101
- MS Office at Home

*See this page for course listings.*

## TELEVISION PRODUCTION

### PUBLIC ACCESS TELEVISION PRODUCTION TRAINING

Public Access Television training gives you the chance to use professional video equipment to create programs to air on local cable television and the internet! In four 4-hour classes you'll learn the basics of studio production, field camera work, lighting, audio and non-linear editing. These skills will prepare you to produce your own show or assist in a variety of crew positions in professional and student productions. Completing this class certifies you to use the equipment and facilities of Fox Valley Television free of charge and gives you access to our local public access channel to air your programs.

CLASS FEE: \$100

**TVP001.800 (21429)**

12:00pm- 4:00pm Sa

COL115 Rennels

Meets between: Feb. 2-Feb. 23

### PUBLIC ACCESS TELEVISION - INTERMEDIATE EDITING/DVD

This course provides students with intermediate instruction in non-linear video editing using Adobe Premiere. This class is a follow up to TVP001 and is not required for Public Access Certification. Students will learn advanced non-linear video editing techniques including advanced transitions and effects, titling, key-frame animation, chroma keying and multi-camera editing. Students will also learn about different output formats, video compression and preparing a project for distribution. Prereq: Successful completion of TVP001.

CLASS FEE: \$100

**TVP002.800 (21430)**

12:00pm- 4:00pm Sa

COL145 Rennels

Meets between: March 2-March 16

## WORLD LANGUAGES

### LEARN A LITTLE ITALIAN

Whether you are interested in learning the basics of the Italian language to help you through that trip to Italy or you're just wanting to learn the language for fun, this course will introduce you to the basics of this beautiful language. You'll learn conversational Italian and gain insight into everyday life, customs, and culture in Italy! Class will be taught at a comfortable pace for beginners and will prepare you to say "Arrivederci" to your fears of learning a new language.

CLASS FEE: \$179

**LAN800.600 (21476)**

6:30pm- 9:00pm TTh

APC258 Ruscetti

Meets between: Feb. 26-April 4

### LEARN MORE ITALIAN

Grow your vocabulary as you learn more about the Bel Paese (Beautiful Country). Practice speaking the language and gain a greater understanding of conversational Italian as well as the essential grammar you'll need as you continue your study. This course is a perfect continuation of Learn a Little Italian or if you've had some exposure to Italian previously.

CLASS FEE: \$149

**LAN801.600 (21477)**

6:30pm- 9:00pm TTh

APC258 Ruscetti

Meets between: April 16-May 9

### LEARN A LITTLE SPANISH

Overcome your fear of learning a new language in this six-week class – designed for individuals who have had no previous Spanish experience, but who want to start speaking and understanding the language. You'll begin to feel comfortable using Spanish both in class and in the real world. Class will be taught at a slow pace and will start from the beginning of learning the Spanish language. Follow this class with Learn More Spanish. Note: For more information about the specific content of this course and textbook requirements, email [communityed@waubonsee.edu](mailto:communityed@waubonsee.edu).

CLASS FEE: \$179

**LAN805.600 (21402)**

6:30pm- 9:00pm MW

APC280 Expert

Meets between: Feb. 25-April 3

### LEARN MORE SPANISH

If you have the most basic Spanish language skills, but are ready for more, you'll progress in this vocabulary-building class suited for those with some prior exposure to the language. You'll begin speaking in class the very first week as you grow comfortable with vital conversational builders including fundamental grammar, working phrases and important vocabulary. This essentials class hands you necessary language tools you can put to work as you walk out of the classroom door and into the Spanish-speaking world.

Note: For more information about the specific content of this course and textbook requirements, email [communityed@waubonsee.edu](mailto:communityed@waubonsee.edu). Prereq: Learn a Little Spanish or equivalent Spanish language skills. CLASS FEE: \$129

**LAN808.600 (21403)**

6:30pm- 9:00pm MW

APC280 Expert

Meets between: April 15-May 8

## KIDS AND TEENS

### MINECRAFT SATURDAYS - MINECRAFT CODING WITH JAVA **NEW!**

Do you want to learn to create and use Lucky Blocks? You'll learn basic Java coding skills to create your own custom mob elements to enhance your Minecraft game. After your session, your projects will be available on a secure Black Rocket website to share with your friends and family.

CLASS FEE: \$39

**INT720.800 (21495)**

12:30pm- 3:30pm Sa

HCC Land

Meets on: April 6

### MINECRAFT SATURDAYS - MINECRAFT ORE CREATOR **NEW!**

You'll create new elements and tools for your world using unique color and texture combinations that you create! These mods will take your world to a new level! After your session, your projects will be available on a secure Black Rocket website to share with your friends and family.

CLASS FEE: \$39

**INT736.800 (21493)**

12:30pm- 3:30pm Sa

HCC Land

Meets on: March 30



### MINECRAFT SATURDAYS - MINECRAFT WORLD BUILDER **NEW!**

Have you always wanted to design your own world? You'll create your own custom Minecraft map with a special software that will allow you build your own world from the ground up using terraforming and painting biomes and vegetation. After your session, your projects will be available on a secure Black Rocket website to share with your friends and family.

CLASS FEE: \$39

**INT737.800 (21492)**

9:00am- 12:00pm Sa

HCC Land

Meets on: March 30



### MINECRAFT SATURDAYS - MINECRAFT MAGIC **NEW!**

Is it magic? No, it's coding with Java! You'll use Java to create your own Minecraft potions and wands to use in your wizarding world. After your session, your projects will be available on a secure Black Rocket website to share with your friends and family.

CLASS FEE: \$39

**INT739.800 (21494)**

9:00am- 12:00pm Sa

HCC Land

Meets on: April 6

### NEW! SAFE SITTER® (1-DAY WITH CPR)

Safe Sitter® teaches young teens (11-14) everything they need to know to be safe when they're home alone, watching younger siblings or babysitting. Students learn lifesaving skills such as how to rescue someone who's choking, and helpful information like what to do if there's severe weather. The lessons are filled with fun activities and role-playing exercises. Students even receive training to improve their comfort level with CPR and choking rescue.

CLASS FEE: \$65

**PDY820.801 (21489)**

9:00am- 3:30pm Sa

APC158 Baum

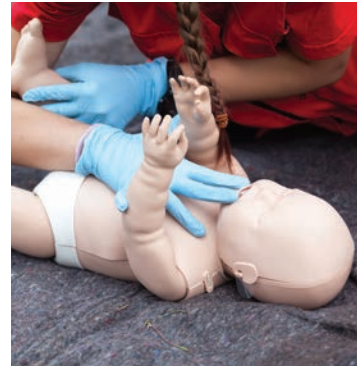
Meets on: March 23

**PDY820.802 (21490)**

9:00am- 3:30pm Sa

APC158 Baum

Meets on: April 27





# Unique Local Experiences

*Memorable things to do  
hosted by local experts.*

## **Handcraft an Haute Couture Scarf**

Delight in a river of beautiful colors and designs as you create your very own Sprinkle-Shibori Dyed scarf under the guidance of acclaimed fiber artist Natasha Lewis! Using a few simple materials and a little creativity, you'll design a beautiful gift for someone special or for yourself. Made from 100% silk and measuring 8x72 inches, you're sure to impress! Note: Bring an apron – everything else is provided.

**Thursday, Feb. 21, 2019**  
6-9 p.m.  
\$35

*Bring a friend! Only \$55  
(for two spots)*

*Session held at Esther's Place  
Fiber Arts Studio in Big Rock.  
Only 10 spots available.*

## **Perform Some "Magics" with Farrell Dillon**

Learn a trick or two in this unique experience with master magician Farrell Dillon.

**Saturday, March 2, 2019**  
4-5 p.m.  
\$29

*Sugar Grove Campus, Auditorium.  
Only 8 spots available.*

*Limited to those age 12 and above.*

*Purchase both Perform Some  
"Magics" experience and the  
Farrell Dillon stage show for the  
discounted price of \$39.*

## **Make Your Own Custom Wine**

Experience the fine art of making your own custom wine from start-to-finish. It's all about fermentation, stabilization, clearing, selecting corks, bottling – and of course, creativity! Led by the experts at Fox Valley Homebrew & Winery Supplies, you're sure to have a good time and will be prepared to make wine at home.

**Saturday, March 16, 2019**  
11:30 a.m.-2 p.m.  
\$59

*Session held at Fox Valley  
Homebrew & Winery Supplies  
in Aurora.*

*Only 7 spots available.*

*Must be 21 to attend.*

*These Unique Local  
Experiences are limited to  
those age 18 and above  
unless otherwise noted.*





### Create a Hand-Felted Bunny Perfect for Spring

Hippity-hop into spring and create your own miniature felted bunny. You'll handcraft this adorable cottontail from local wool and then make whimsical mushrooms for a colorful addition to your spring decor.

**Thursday, April 4, 2019**  
7-9 p.m.  
\$29

*Bring a friend! Only \$45 (for two)*

*Session held at Esther's Place  
Fiber Arts Studio in Big Rock.*

*Only 6 spots available.*

### Defy Gravity with Aerial Yoga

Take flight in this unique experience that combines acrobatic arts with traditional yoga. Experience new postures using a soft fabric sling suspended from the ceiling. No experience is required to attend this session that will allow you to take your yoga practice to the next level. Enjoy light refreshments before and after your high flying experience!

**Saturday, April 6, 2019**  
Noon-1:30 p.m.  
\$59

*Session held at Living Divinia  
Yoga and Fitness Studio  
in Yorkville.*

*Only 7 spots available.*

### Discover the Art of Painting at The Petite Palette

Discover your inner artist with the help of a professional artist from The Petite Palette! In this guided painting experience, you'll create a unique piece that is yours to keep! Check [waubonseetickets.com](http://waubonseetickets.com) for project details.

**Tuesday, April 16, 2019**  
6-9 p.m.  
\$39

*Session held at The Petite Palette  
in Sandwich.*

*Only 10 spots available.*

**Purchase tickets for Unique Local  
Experiences at [waubonseetickets.com](http://waubonseetickets.com)**

# Trips and Tours

*Travel to far-away destinations or make new discoveries close to home. Explore Local Excursions and Extended Tours created and curated by Community Education*

*For more details and registration information, visit [www.waubonsee.edu/trips](http://www.waubonsee.edu/trips) or call our travel specialist at (630) 466-2360*

## A TASTE OF TRAVEL



### OPEN HOUSE

*Find out how our trusted tour partners can help you to discover your new favorite place. Fancy-*

*Free Holidays, Mayflower Tours, Vacations by Rail, Premiere World Discovery, American Classic Tours, Cosmos and Safariline will all be present to share their most popular excursions. Enjoy tasty international treats and an informative Q&A with journalist and author Kate Silver.*

### Travel Smart with Kate Silver

How can you avoid scams, travel on your own and explore a city like a local? These, and other travel related questions, will be answered during this free-wheeling, interactive interview/Q&A with Kate Silver, author of Frommer's Easy Guide to Chicago. What do you want to know? Get your questions ready!

#### Friday, February 22, 2019

10 a.m.-2 p.m.

Travel Smart Q&A at 10:30 a.m.

Sugar Grove Campus, Academic and Professional Center

A Taste of Travel and Travel Smart are presented FREE of charge by Community Education. Please RSVP at (630) 466-2360 or [communityed@waubonsee.edu](mailto:communityed@waubonsee.edu)

## LOCAL EXCURSIONS

### Shake, Rattle & Roll at Starved Rock

Get rowdy, snap those fingers and clap your hands for this unique show that will get you rockin' and ready to dance. This rock and roll show will include your favorites from Bobby Darin, John Mellencamp, Neil Diamond, Dean Martin, the 50's and 60's and more. Start with a tour of Reddick Mansion, a 19th century, 22-room Italianate mansion built before the Civil War, anchoring Washington Square, sight of the first Lincoln-Douglas Debate, on the way to the show. Register/Refund by February 26, 2019.

#### Tuesday, March 12, 2019

TRP896.001

CRN# 21292

8 a.m.-4:45 p.m.

\$99

*Depart and Return Sugar Grove and Plano Campus.*

### What's Cookin', Morton?

Amanda Pyle, the Heart of Illinois Professional Chefs Association 2016 Chef of the Year, leads this Knife Skills cooking class at The Cookery in Morton, Ill, for anyone interested in good food! After demonstration and lunch tasting, a trip to Washington Square is a foodie's delight—visit Lori's Kitchen, Holland's Mercantile, Lindy's Downtown Market, Holland's Caramel Corn and more. Use your best judgment to bring a bag or cooler for your purchases. There will be a Chef's Knife raffle and other goodies from Chef Amanda's kitchen.

#### Wednesday, April 17, 2019

TRP895.001

CRN# 21291

8:15 a.m. - 5:30 p.m.

\$99

*Depart and return: Sugar Grove and Plano Campus.*

### 8 on 80

This two-night, three-day adventure includes eight stops on Interstate 80: Isabelle Bloom Studio, Iowa 80 Truck Stop, Jasper County Historical Museum, Winterset Iowa (including the The Bridges of Madison County movie hotspots and John Wayne Birthplace Museum) Pella Iowa (including the Tulip Garden), the Amana Colonies for a tour and lunch, and the Grant Wood Studio and Visitor Center. Conclude the journey with dinner and a treat at Lagomarcino's Confectionery. Includes overnight accommodations at The Cobblestone Inn and Royal Amsterdam Hotel and eight meals.

#### Thursday, May 16 - Saturday, May 18, 2019

TRP892.002

DBL

CRN# 21294

TRP892.001

SGL

CRN# 21293

6:45 a.m. Thursday to 8:30 p.m. Saturday

\$399 per person, double, \$499 single

*Depart and return: Sugar Grove Campus.*





## EXTENDED TOURS

*Once-in-a-lifetime extended tours offered by our trusted travel partners*

### Florida Adventure

Mayflower Tours

Explore the Sunshine State, from the Moorish architecture of St. Augustine and Space Coast of Cape Canaveral to the excitement of Epcot and the warm beauty of Florida's Gulf of Mexico.

**February 23, 2019 (12 days)**

From \$2,679 per person, double;  
w/air \$3,354 per person, double

### French Riviera Explorer

Premier World Discovery

Explore the South of France with a seven-night, one-hotel stay in Nice. Tour Nice, Monte Carlo, Cannes and St. Tropez, as well as Ventimiglia and San Remo, Italy.

**March 26, 2019 (9 days)**

From \$3,249 per person, double  
(includes air from Chicago)

### Best of Italy by Rail

Vacations by Rail

Say ciao to a country filled with history, culture and some of the best food in the world. Connect to Italy's top destinations - Rome, Florence and Sorrento - by rail and enjoy comprehensive sightseeing and unique excursions, including an exclusive wine tasting and cooking class in a Tuscan Castle.

**May 29, 2019 (11 days)**

From \$3,795 per person, double.  
Land Only

Discover more extended tour options at [www.waubonsee.edu/trips](http://www.waubonsee.edu/trips) or call our travel specialist at (630) 466-2360.

# Community Events



## Farrell Dillon

*Laugh till you cry!*

Known for his regular appearances on four seasons of the CW Network's "Masters of Illusion" and the show's live stage production currently in residence at Bally's Las Vegas, Farrell is now bringing his blend of zany comedy and mind-melting magic to the Auditorium stage.

**Saturday, March 2, 2019**



7 p.m.  
Sugar Grove Campus,  
Auditorium  
\$19/\$12 children 12  
and under

## Our Town

*Winner, 1938 Pulitzer Prize  
for Drama*

A landmark in American drama, Thornton Wilder's "Our Town" tells the story of a small town, Grover's Corners, New Hampshire, in order to tell us the story of every town, the whole world over.

**April 5-7, 2019**

Sugar Grove Campus, Auditorium  
\$20 adults/\$15 students and  
seniors 65+

*Presented by Community  
Education and the Fox Country  
Players*



## Hidden in Plain Sight: Sears Homes of Chicagoland

*Lara Solonickne*

Explore the world of "kit homes" – the houses sold by mail-order retailers Sears Roebuck, Montgomery Ward, Harris Homes and others.

Day one (Friday) is the classroom presentation. On day two (Saturday), enjoy a two-mile walk through a nearby neighborhood to discover the kit homes hidden in plain sight in Aurora.

Lara Solonickne is the creator of the blog Sears Homes of Chicagoland ([www.sears-homes.com](http://www.sears-homes.com)).

**Friday, April 26, 2019**

10 a.m.-Noon  
Sugar Grove Campus, Auditorium  
\$15

**Saturday, April 27, 2019**

10am - noon  
Address given  
at Friday presentation or  
call Community Education



Purchase tickets at [www.waubonseetickets.com](http://www.waubonseetickets.com)



# Asset Earth

*Exploring people and their environment*



## **One Earth Film Festival**

### *Film screening*

Join us for a selection from the Midwest's premier environmental film festival featuring thought-provoking environmental films and interactive discussions focused on solutions.

Last year's festival featured 50 screenings of 30 films held at dozens of locations throughout Chicagoland and drew thousands of attendees.

### **Monday, March 4, 2019**

Aurora Downtown Campus,  
Multipurpose Room  
7 p.m.

FREE - *Donation Suggested to  
Conservation Foundation*

## **The View from Earth:**

### **400 Years of Astronomical Discovery**

*Joe DalSanto*

*Assistant Professor of Astronomy*

*College of DuPage*

The invention of the telescope 400 years ago completely changed our view of the cosmos. This presentation will provide an overview of the numerous, incredible discoveries such as planets, stars and galaxies made possible by the most important astronomical invention ever created.

### **Thursday, March 7, 2019**

Sugar Grove Campus, Auditorium

7 p.m.

FREE



# PROFESSIONAL DEVELOPMENT Work

*This is Your Future!*  
*Develop Your Potential*  
*Enhance Your Skills*  
*Take Charge of Your Career*

<b>AMERICAN HEART ASSOCIATION</b>	<b>25</b>
Health Care Professionals	26
Community Members	26
Instructors	27
<b>BUSINESS AND FINANCE</b>	<b>28</b>
Bookkeeping Series	28
Paralegal	28
<b>COMPUTER SOFTWARE</b>	<b>30</b>
Computer Support	30
Database	30
Information Security	30
Office Suites	31
Spreadsheet	31
<b>HEALTH AND SAFETY</b>	<b>32</b>
Construction	32
Food Service and Sanitation	32
Health Care Professions	33
<b>LEADERSHIP</b>	<b>35</b>
<b>MANUFACTURING</b>	<b>36</b>

## SPECIAL FEATURES

Small Business Development Center	38
Workforce Innovation and Opportunity Act Funding	40
Corporate Training	41

## GENERAL INFORMATION

Courses by Start Date	42
Sugar Grove Campus Map	44
How to Read the Class Schedule	45
Registration, Payment and Refund Policies	45
Registration Form	47



American  
Heart  
Association®

**AUTHORIZED**  
**TRAINING**  
C E N T E R

*Anyone can learn CPR—and everyone should!*

Cardiac emergencies happen everywhere: in the workplace, at home, out in the world. You know bystander CPR increases a victim's chance of survival. Equip yourself with skills to act quickly in emergencies and ultimately save lives with our community-focused training in general first aid, instructor certification and several CPR/AED courses.

- **Basic Life Support (BLS) Provider Training**  
for health care professionals includes initial certification and certification renewal
- **Heartsaver CPR/AED**  
courses for community members also meet DCFS requirements for child care providers

Waubonsee Community College is an American Heart Association (AHA) Training Center. Two-year AHA certifications can be provided in CPR/AED and First Aid. We provide a regular schedule of CPR classes on campus and also bring training to businesses and organizations. Our expert instructors ensure consistent, high-quality training and hands-on practice in key techniques.

- First aid procedures
- CPR techniques
- AED usage
- Bloodborne pathogens controls



*See the following pages  
to explore your options.  
If you need helping  
choosing the right  
course, call  
(630) 870-3902.*



## HEALTH CARE PROFESSIONALS

### MENTAL HEALTH FIRST AID

This 8-hour course incorporates an evidence-based curriculum that is appropriate for educators, health care professionals, first responders, human resource professionals, social service staff, and caring citizens. Participants will learn how to identify risk factors for and warning signs of several mental health issues including: major depression, anxiety disorder, psychosis, substance abuse and suicidal behavior. The Mental Health First Aid course provides participants with strategies for managing crises and identifying appropriate mental health treatment resources. Upon successful completion of the course, participants will receive the nationally-recognized certification in Mental Health First Aid. **WORKBOOK FEE: \$99**

**ALT901.600 (21418)**  
6:30pm- 8:30pm TTh  
FOXVLY217 Expert  
Meets between: April 16-April 25

### BLS PROVIDER CPR

High-quality CPR is the foundation of lifesaving resuscitation for cardiac arrest victims. Whether you're certifying for the first time or renewing, this nationally-recognized American Heart Association course provides you confidence-building skills from instructors who can provide real-life experience. You will learn both single-rescuer and team basic life support skills for application in both pre-hospital and in-facility environments, with a focus on high-quality CPR and team dynamics. Plus, you will participate in simulated clinical scenarios and learning stations. Successful completion of hands-on skills testing and a written examination are required for a two-year certification. This is the appropriate course for Nursing and Health Professions students. **WORKBOOK FEE: \$79**

<b>AHA920.600 (21337)</b> 5:30pm- 9:30pm Th FOXVLY217 Baum Meets on: Jan. 3	<b>AHA920.800 (21346)</b> 8:00am- 12:00pm Sa FOXVLY217 Ries Meets on: Jan. 5	<b>AHA920.601 (21338)</b> 5:30pm- 9:30pm T FOXVLY217 McCornack Meets on: Jan. 8	<b>AHA920.602 (21339)</b> 5:30pm- 9:30pm M FOXVLY217 Baum Meets on: Jan. 14	<b>AHA920.603 (21340)</b> 5:30pm- 9:30pm T FOXVLY217 Salvador Meets on: Feb. 12	<b>AHA920.801 (21347)</b> 8:00am- 12:00pm S FOXVLY217 Ries Meets on: Feb. 16	<b>AHA920.604 (21341)</b> 5:30pm- 9:30pm T FOXVLY217 Salvador Meets on: March 5	<b>AHA920.802 (21348)</b> 8:00am- 12:00pm Sa FOXVLY217 Ries Meets on: March 9	<b>AHA920.605 (21342)</b> 5:30pm- 9:30pm T FOXVLY217 Ries Meets on: April 2	<b>AHA920.606 (21343)</b> 5:30pm- 9:30pm W FOXVLY217 Salvador Meets on: April 17	<b>AHA920.607 (21344)</b> 5:30pm- 9:30pm M FOXVLY217 Expert Meets on: April 22	<b>AHA920.803 (21349)</b> 8:00am- 12:00pm Sa FOXVLY217 Ries Meets on: May 4	<b>AHA920.608 (21345)</b> 5:30pm- 9:30pm W FOXVLY217 Salvador Meets on: May 8
--------------------------------------------------------------------------------------	---------------------------------------------------------------------------------------	------------------------------------------------------------------------------------------	--------------------------------------------------------------------------------------	------------------------------------------------------------------------------------------	---------------------------------------------------------------------------------------	------------------------------------------------------------------------------------------	----------------------------------------------------------------------------------------	--------------------------------------------------------------------------------------	-------------------------------------------------------------------------------------------	-----------------------------------------------------------------------------------------	--------------------------------------------------------------------------------------	----------------------------------------------------------------------------------------

## COMMUNITY MEMBERS

### HEARTSAVER FIRST AID, CPR/AED FOR ADULTS, CHILDREN AND INFANTS

According to the Occupational Safety and Health Administration (OSHA), nearly 80 percent of sudden cardiac arrests occur outside the hospital. Bystander CPR increases a victim's chance of survival. Through our Heartsaver CPR AED Course, taught by seasoned instructors with real-life experience, you gain the confidence and skills to respond. Using the American Heart Association's research-proven Practice-While-Watching (PWW) technique allows instructors to provide feedback while participants gain hands-on experience performing CPR and working with an AED. Successful completion of hands-on skills testing is required for certification. Note: Meets DCFS requirements for child care providers. Does NOT meet the requirements for healthcare professionals or healthcare students. Fee Includes: Student Manual and materials **WORKBOOK FEE: \$59**

<b>AHA902.601 (21332)</b> 5:30pm- 9:30pm W FOXVLY217 McCornack Meets on: March 6	<b>AHA902.800 (21333)</b> 12:00pm- 4:00pm Sa FOXVLY217 Expert Meets on: Jan. 19	<b>AHA902.803 (21334)</b> 12:00pm- 4:00pm Sa FOXVLY217 Expert Meets on: April 20
-------------------------------------------------------------------------------------------	------------------------------------------------------------------------------------------	-------------------------------------------------------------------------------------------



American  
Heart  
Association®

**AUTHORIZED  
TRAINING  
CENTER**



## HEARTSAVER FIRST AID

The CDC reports more than 30 million emergency room visits due to unintentional injury annually. A quick and effective response can drastically impact the outcome for the victim. Our Heartsaver First Aid Course teaches you the critical skills needed to respond to and manage an emergency in the first few minutes until emergency medical services (EMS) arrives. In this course, you learn how to treat bleeding, sprains, broken bones, shock, allergic reaction and other first aid emergencies. Successful completion of hands-on skills testing is required for certification. Note: Meets DCFS requirements for child care providers. Fee Includes: Student Manual and materials.

WORKBOOK FEE: \$59

### **AHA916.801 (21335)**

8:00am- 11:30am Sa  
FOXVLY217 Baum

Meets on: Feb. 23

### **AHA916.803 (21336)**

8:00am- 11:30am Sa  
FOXVLY217 Expert

Meets on: April 20

## HEARTSAVER FIRST AID, CPR/AED FOR ADULTS, CHILDREN AND INFANTS

Learn basic CPR and relief of choking skills for adults and children and how to use an Automated External Defibrillator (AED). First Aid techniques are included. Successful participants will receive CPR-AED and First Aid certification that is valid for two years. Fee Includes student manual and materials.

WORKBOOK FEE: \$99

### **AHA926.800 (21351)**

8:00am- 4:00pm S  
FOXVLY217 Baum

Meets on: Feb. 23

### **AHA926.801 (21352)**

8:00am- 4:00pm Sa  
FOXVLY217 Expert

Meets on: April 20

## INSTRUCTORS

### AHA INSTRUCTOR CERTIFICATION FOR BLS CPR AND HEARTSAVER CPR AND FIRST AID

A career as a CPR Instructor allows you to provide countless individuals the knowledge to provide help during a cardiac or breathing emergency. This course provides two-year certification as a BLS CPR Instructor. BLS CPR Instructors are also qualified to teach Heartsaver CPR and First Aid classes.

Prereq: BLS Provider CPR Certification. Fee includes: Online prework; Instructor manual. WORKBOOK FEE: \$299

#### **AHA925.001 (21350)**

8:00am- 4:30pm T  
FOXVLY217 Salvador

Meets on: March 19

#### **AHA925.002 (21423)**

8:00am- 4:30pm Sa  
FOXVLY217 McCornack

Meets on: April 27

### BLS PROVIDER CPR SKILLS SESSION

Take advantage of combining eLearning and Skills Testing to complete your BLS Provider CPR certification. First, you will complete the dynamic online course: Heartcode® BLS. Then, you will practice and test skills during the hands-on, classroom-based session. Successful completion of skills testing will certify the participant for two years. Valid certificate from Heartcode® BLS must be presented at the Skills Session. Fee includes online course key and materials.

WORKBOOK FEE: \$79

#### **AHA932.920 (21355)**

4:00pm- 5:00pm W  
FOXVLY217 Salvador

Meets on: May 8

## AMERICAN HEART ASSOCIATION CPR INSTRUCTOR RENEWAL

The American Heart Association trains more than 12 million people in CPR annually, with the help of their Instructors. This course, designed for current AHA CPR Instructors, provides an update of AHA policies and guidelines, a review of CPR Instructor and CPR provider skills, and an update on Waubensee Training Center policies. The course is one requirement for renewing Instructor certification. Successful completion of hands-on skills testing and a written examination is required for two-year certification. In order to attend, participants must present their current BLS Provider or Heartsaver Instructor card in class and bring their copy of the Instructor Manual.

WORKBOOK FEE: \$75

#### **AHA930.600 (21353)**

5:30pm- 9:30pm T  
FOXVLY217 Salvador

Meets on: Feb. 26

#### **AHA930.601 (21354)**

5:30pm- 9:30pm Th  
FOXVLY217 Salvador

Meets on: March 21



BUSINESS  
AND FINANCE

BOOKKEEPING  
SERIES

SMALL BUSINESS: GET  
YOUR BOOKS INTO SHAPE

Attention business owners and accounting managers! Need to optimize the performance of your accounting department? Is your goal to save time on your monthly bookkeeping? Learn from an expert in this lecture-based experience and explore all the workflow options available in QuickBooks. Dive into the control mechanism for your company's financial data, the all-important Chart of Accounts. Learn how this overlooked tool is vital to your success. Explore the customization options to give you a user-friendly experience while gaining tips and tricks to work more efficiently.  
CLASS FEE: \$59

**BU942.600 (21449)**  
6:00pm- 8:30pm T  
DWNTN244 Expert  
Meets on: Jan. 22

MAKE YOUR BUSINESS  
MORE PROFITABLE

Learn about two key areas of profitability (pricing and product mix). Walk away with insight for establishing a greater profit margin in your small business. Explore job costing and learn how to categorize the costs of products made and sold. Discover how to arrive at the best price possible for your product or service. Learn how you can utilize QuickBooks for tracking purposes and further analysis of goods and services sold.  
CLASS FEE: \$59

**BUS943.600 (21451)**  
6:00pm- 8:30pm T  
DWNTN244 Expert  
Meets on: Jan. 29

BOOKKEEPING ESSENTIALS:  
THE KING OF REPORTS

What secret weapon does every top-notch accounting professional treasure? Reports! Examine all of the options for creating and customizing reports in QuickBooks. Learn how to interpret the many options now at your disposal. Gain an understanding of all the numbers by reviewing three main monthly reports. Learn other options that can be used to guide your decision-making process. See why the budget process is a vital aspect of accounting in the small business world and improve your analytical skills.

CLASS FEE: \$59

**BUS944.600 (21452)**  
6:00pm- 8:30pm T  
DWNTN244 Expert  
Meets on: Feb. 5

BOOKKEEPING FOR SMALL  
BUSINESS SUCCESS

Learn how to optimize the performance of your accounting and bookkeeping efforts, review two key areas of profitability, explore the many reporting options using QuickBooks and more in this lecture-based bookkeeping series led by a certified QuickBooks ProAdvisor. Fee includes: Three workshops: Get Your Books into Shape, Make Your Biz More Profitable, and Bookkeeping Essentials: The King of Reports.  
CLASS FEE: \$159

**BUS941.600 (21447)**  
6:00pm- 8:30pm T  
DWNTN257 Expert  
Meets on: Jan. 22- Feb 5

QUICKBOOKS 2018 SERIES

Learn to manage the financial aspects of your small business quickly and efficiently using QuickBooks 2018 and how to utilize the in depth features in the software to apply to certain business situations.  
CLASS FEE: \$199

Enroll anytime for this online course.

Learn more at  
[waubonsee.edu/ProBiz](http://waubonsee.edu/ProBiz)

PARALEGAL

PARALEGAL CERTIFICATION  
PREPARATION

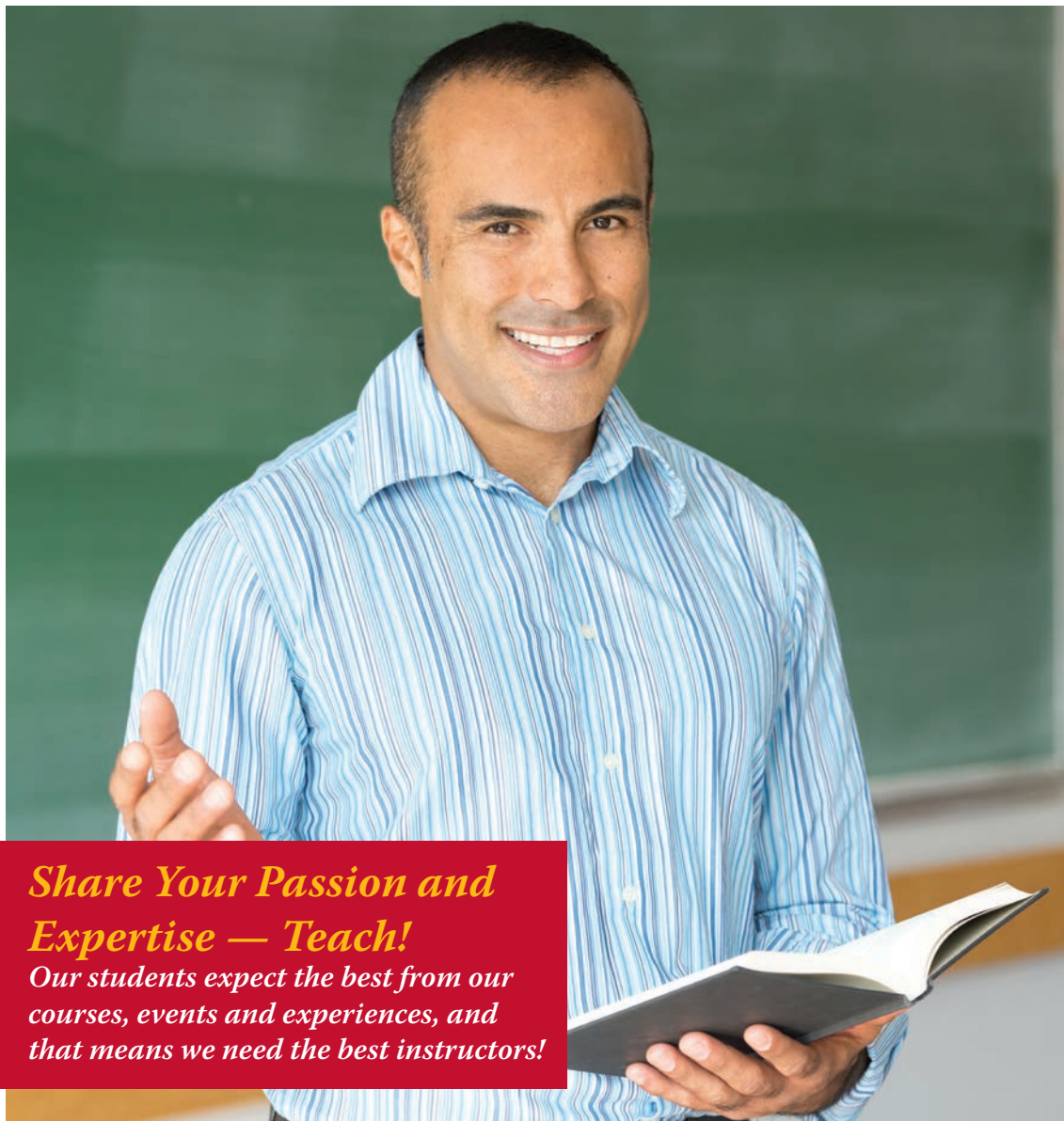
Paralegals are involved in sophisticated legal work in traditional law office settings and in the corporate, government and public arenas. Obtaining a quality education is the best way to prepare for the paralegal profession. This self-paced, online program will get you ready for an entry-level paralegal position, and it'll prepare you to take the certification exam.

CLASS FEE  
(with exam voucher): \$2,195  
CLASS FEE  
(no exam voucher): \$1,995

Enroll anytime for this online course.

Learn more at  
[waubonsee.edu/ProBiz](http://waubonsee.edu/ProBiz)

For more information  
on how to read this  
schedule, see page 45.



## ***Share Your Passion and Expertise — Teach!***

*Our students expect the best from our courses, events and experiences, and that means we need the best instructors!*

### **PERSONAL ENRICHMENT**

Discover how you can partner with Community Education to create and teach a personal enrichment course or host a Unique Local Experience. You'll inspire and inform others with your enthusiasm and expertise. You'll also be promoting your business and making extra money, too.

### **PROFESSIONAL DEVELOPMENT**

Professional subject matter experts are needed in a variety of areas, especially those who are bilingual. Share your knowledge and improve your industry by working with us.

**For more details and to apply, visit**  
**[waubonsee.edu/employment](http://waubonsee.edu/employment)**

## COMPUTER SOFTWARE

### COMPUTER SUPPORT

#### W COMPTIA A+ CERTIFICATION TRAINING

This course will prepare you for CompTIA A+ certification, which you'll earn after you pass two exams. The CompTIA A+ Certification exam 220-901 covers the foundational hardware knowledge a PC support technician should know. The CompTIA A+ Certification exam 220-901 covers the operating system, virtualization, mobile device management and hardware troubleshooting skills.

CLASS FEE  
(with exam voucher): \$1,995  
CLASS FEE  
(no exam voucher): \$1,695

Enroll anytime for this online course.

Learn more at  
[waubonsee.edu/ProComp](http://waubonsee.edu/ProComp)



### DATABASE

#### ACCESS LEVEL 1

Learn to build, edit and maintain a database in Microsoft Access 2016, complete with tables, reports, forms, macros and queries to give you fast access to all your important information  
Fee includes: materials.  
CLASS FEE: \$189

**DBS900.001** (21456)  
8:00am- 4:30pm F  
HCC101 Expert  
Meets on: Jan. 18

#### ACCESS LEVEL 2

Enhance your Access skills in this class. The topics to be covered in Access Level 2 include managing tables--column size, defining data entry properties with validation and default values, controlling data integrity with AutoCorrect, and understanding table relationships; building/modifying forms--creating forms in design view and calculated controls; modifying forms layout working with select queries; viewing query properties and using basic macros.  
Prereq: Completion of Access Level 1 or equivalent experience.  
Fee includes: materials.  
CLASS FEE: \$189

**DBS901.001** (21457)  
8:00am- 4:30pm F  
TBA Expert  
Meets on: Jan. 25

### INFORMATION SECURITY

#### ADVANCED PC SECURITY

Use ethical hacking techniques to locate and close security holes in your own network. You will discover the complex method of electronic breaking and entering.  
CLASS FEE: \$149

Enroll anytime for this online course.

Learn more at  
[waubonsee.edu/ProComp](http://waubonsee.edu/ProComp)

#### CERTIFIED INFORMATION SYSTEMS AUDITOR (CISA)

Information security is one of the fastest-growing career paths in the IT industry and professionals with Certified information System Auditor (CISA) certification are already a step ahead of their competition. This certification is extremely technical, your abilities more than other certifications might.  
CLASS FEE  
(with exam voucher): \$1,395  
CLASS FEE  
(no exam voucher): \$795

Enroll anytime for this online course.

Learn more at  
[waubonsee.edu/ProComp](http://waubonsee.edu/ProComp)

#### CERTIFIED INFORMATION SECURITY MANAGER (CISM)

Information security is without question one of the hottest and most lucrative areas of the field. The CISM cyber security certification promotes consistent international practices and provides management with reassurance of your skills.  
CLASS FEE  
(with exam voucher): \$1,395  
CLASS FEE  
(no exam voucher): \$795

Enroll anytime for this online course.

Learn more at  
[waubonsee.edu/ProComp](http://waubonsee.edu/ProComp)



## CERTIFIED INFORMATION SYSTEMS SECURITY PROFESSIONAL (CISSP)

Information security has become a critical part of virtually every organization — no matter the industry. The Certified Information Systems Security Professional (CISSP) training is an engaging, fully online program that provides in-depth instruction in key area related to information / cyber security.

CLASS FEE: \$1,995

Enroll anytime for this online course.

Learn more at  
[waubonsee.edu/ProComp](http://waubonsee.edu/ProComp)

## INFORMATION SECURITY TRAINING

This training program includes three of the most valuable certifications in IT security — certifications that command some of the most lucrative salaries. You will complete training for the CISA, CISM and CISSP certifications. The vendor-neutral CISSP certification is the ideal credential for those looking to learn deep technical and managerial competence.

CLASS FEE  
(with exam voucher): \$3,295  
CLASS FEE  
(no exam voucher): \$1,795

Enroll anytime for this online course.

Learn more at  
[waubonsee.edu/ProComp](http://waubonsee.edu/ProComp)

## OFFICE SUITES

### INTRODUCTION TO MICROSOFT OUTLOOK 2013

Get up to speed with the latest development in Outlook, including how to manage your e-mail, calendar, and contacts and how to get the most out of program tools such as Search Folders and Quick Steps.

CLASS FEE: \$525

**OPS900.600 (21454)**

6:00pm- 9:00pm W

HCC101 Expert

Meets between: March 6-April 10

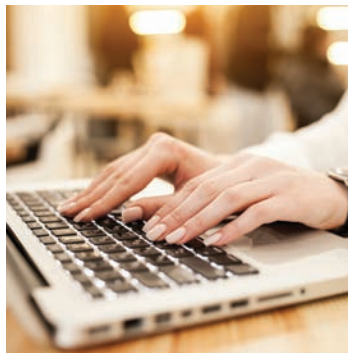
### WHAT'S NEW IN MICROSOFT OFFICE 2013

Get up to speed on the exciting new features of Microsoft Office 2013 using step-by-step, easy-to-follow instructions. You will learn the features for Word, Excel, PowerPoint, Access, Outlook, OneNote and Publisher.

CLASS FEE: \$115

Enroll anytime for this online course.

Learn more at  
[waubonsee.edu/ProComp](http://waubonsee.edu/ProComp)



## SPREADSHEET

### EXCEL LEVEL 1

Participants in this class learn the basics of electronic spreadsheet creation. Topics include: screen and toolbar identification; working with new and existing workbooks; text and value entry; using simple formulas; navigating throughout a worksheet; inserting and deleting columns, rows, cells and named ranges; relative and mixed cell references and font adjustments to increase the readability of your spreadsheet. Prereq: A basic knowledge of Windows. Fee includes: materials.

CLASS FEE: \$189

**SPR900.800 (21458)**

8:30am- 11:30am Sa

HCC101 Expert

Meets between: Jan. 19-Feb. 2

### EXCEL LEVEL 2

This seminar enhances the skills learned in Excel Level 1. Participants will be introduced to: workbook data management, table usage techniques including references for using formulas and data analysis. Students will also learn how to automate tasks, enhance charts, share files and incorporate Web information. Prereq: Completion of Excel Level 1 or equivalent experience. Fee includes: materials.

CLASS FEE: \$189

**SPR901.800 (21459)**

8:30am- 11:30am Sa

HCC101 Expert

Meets between: Feb. 9-Feb. 23

### EXCEL LEVEL 3

Increase spreadsheet skills by learning the advanced features of the software. Topics covered include working with lists; using basic analysis tools including scenarios and maps; working with pivot tables and database queries; and importing and exporting files. Prereq: Completion of Excel Level 2 or equivalent experience. Fee includes: materials.

CLASS FEE: \$189

**SPR902.800 (21460)**

8:30am- 11:30am Sa

HCC101 Expert

Meets between: March 2-March 16

CONSTRUCTION

HOME INSPECTION

This class will prepare you for the Illinois Home Inspector License exam which is required to do home inspections in Illinois. The course combines online learning with a hands-on classroom portion. The online learning component includes such topics as structure, exteriors, roofs, plumbing, electrical, heating, cooling, interiors, insulation and ventilation. In the classroom portion, you will learn how to conduct and document a standards-based high quality home inspection, as well as how to protect yourself from liability. You will perform actual inspections under the instructor's guidance.

Note: In order to benefit from the hands-on classroom portion of this course, you should register several weeks in advance in order to complete your online studies prior to the class dates.  
CLASS FEE: \$1,845

**CST901.001 (21388)**  
8:00am- 6:00pm MTWThF  
WGL110 Expert  
Meets between: Feb. 18-Feb. 22  
**CST901.002 (21389)**  
8:00am- 6:00pm MTWThF  
WGL110 Expert  
Meets between: May 13-May 17



FOOD SERVICE AND SANITATION

FOOD SERVICE SANITATION  
MANAGER CERTIFICATION  
EXAM PREP (1-DAY)

This eight-hour course offers content targeted to supervisory personnel in food service, provides key concepts in: controlling foodborne illness regulations, safe food storage and handling, pest control, sanitizing procedures, equipment design, and facility construction. The course finishes with the administration of the ServSafe exam.

Note: A FSSMC is earned by completing an approved eight hour course with an Illinois approved instructor and passing a national exam accredited by the Conference for Food Protection (CFP) with a 75% or higher, then paying a fee to The Illinois Department  
WORKBOOK FEE: \$179

**FSS907.002 (21420)**  
8:00am- 5:00pm W  
FOXVLY222 Brewster  
Meets on: Feb. 6

**FSS907.003 (21421)**  
8:00am- 5:00pm W  
FOXVLY222 Brewster  
Meets on: April 17

**FSS907.004 (21422)**  
8:00am- 5:00pm W  
FOXVLY222 Brewster  
Meets on: May 15

ILLINOIS FOOD HANDLER  
TRAINING

This ANSI-accredited online Food Handler Training course is approved for use in the State of Illinois. Required for all food handlers at places of employment such as restaurants, fast food, concession stands, hospitals, licensed day care facility, and nursing homes within 30 days of hire.

Do not buy the Food Handler Training if you hold a valid Food Protection Manager Certification pursuant to current food safety law.

Upon successful completion of your course and test, you will print your Food Handler Card. This card is valid for 3 years.

Compatible Devices: computers, tablets, and smartphone-no need for any other downloads

CLASS FEE: \$9.95  
Enroll anytime for this online course.

Learn more at  
[waubonsee.edu/ProHealth](http://waubonsee.edu/ProHealth)

ILLINOIS ALLERGEN  
AWARENESS

This ANSI-accredited online Allergen Awareness course is approved for use in the State of Illinois. Food protection managers working in Category 1 restaurants in the State of Illinois must complete allergen training. This online course satisfies these requirements. In addition, your certificate must be kept at your establishment and made available to the health inspector upon request.

Compatible Devices: computers, tablets, and smartphone-no need for any other downloads

CLASS FEE: \$19.95  
Enroll anytime for this online course.

Learn more at  
[waubonsee.edu/ProHealth](http://waubonsee.edu/ProHealth)

## BASSET ALCOHOL TRAINING COURSE

This ANSI-accredited online course is approved for use in the State of Illinois. All on-premise alcohol servers and those required to check identification for alcohol service are mandated to take Beverage Alcohol Sellers and Servers Education and Training (BASSET) by the Illinois Liquor Control Commission. Upon successful completion of your course you will print your temporary card. An official BASSET card mailed by the Illinois Liquor Control Commission. This card is valid for 3 years.

Compatible Devices: computers, tablets, and smartphone-no need for any other downloads

CLASS FEE: \$19.95

Enroll anytime for this online course.

Learn more at  
[waubonsee.edu/ProHealth](http://waubonsee.edu/ProHealth)

## HEALTH CARE PROFESSIONS

### BECOMING A VET ASSISTANT

This course, taught by a practicing veterinarian and college instructor, will give you the information you need to prepare for work in veterinary hospitals. What vaccinations do cats and dogs really need and how often should they be given? What is the best way to control fleas? What do you do if your dog has a cut? What is the best way to deal with an emergency situation involving a pet? This course will answer all these questions and more.

CLASS FEE: \$115

Enroll anytime for this online course.

Learn more at  
[waubonsee.edu/ProHealth](http://waubonsee.edu/ProHealth)

## W CBCS MEDICAL BILLING AND CODING

If you're seeking entry into the healthcare industry, this comprehensive program will provide you with all of the information you need to earn a certification in medical billing and coding. You will build a foundation of medical vocabulary, to help you better understand the contents of a patient's medical record, as well as notes from practicing physicians. In addition, you'll learn current medical coding standards.

Upon completion of this program, you will be prepared to sit for the Certified Billing and Coding Specialist (CBCS) exam, offered by National Healthcareer Association (NHA). The registration fee for this exam is included with this program.

CLASS FEE  
(with exam voucher): \$2,590

Enroll anytime for this online course.

Learn more at  
[waubonsee.edu/ProHealth](http://waubonsee.edu/ProHealth)



## CERTIFICATE IN GERONTOLOGY

This certificate is relevant for registered nurses, nurse practitioners, licensed vocational nurses, practical nurses, nursing assistants, social workers, occupational therapists, recreation therapists, physical therapists, respiratory therapists, administrators, psychologists, personal care assistants, volunteers, physicians, chiropractors, clergy, physical fitness professionals, adult children of aging parents, or any other individual currently working with or planning to work with older adults.

NOTE: This certificate does constitute 25 continuing education contact hours for nurses and diabetes educators.

The Certificate in Gerontology consists of a total of **11** courses:

- Introduction to Gerontology
- Physiology of Aging
- Mental Health and Aging
- Healthy Aging
- Pain Assessment and Management in the Older Adult
- Death and Dying
- Sleep and Aging
- The Older Woman
- Elder Abuse
- Aging and Disorders of Communication
- Alzheimer's Disease: Mysteries and Possibilities

CLASS FEE: \$259

Enroll anytime for this online course.

Learn more at  
[waubonsee.edu/ProHealth](http://waubonsee.edu/ProHealth)

# HEALTH AND SAFETY

## CERTIFICATE IN LEGAL AND ETHICAL ISSUES IN HEALTHCARE

This certificate is relevant for registered nurses, nurse practitioners, licensed vocational nurses, practical nurses, nursing assistants, social workers, occupational therapists, recreation therapists, physical therapists, respiratory therapists, administrators, psychologists, marriage and family therapists, dietitians, educators, personal care assistants, volunteers, physicians, physician's assistants, chiropractors, clergy, physical fitness professionals, and interested individuals.

NOTE: This certificate does constitute 12 continuing education contact hours for nurses and diabetes educators.

The Legal and Ethical Issues in Healthcare certificate program consists of a total of 8 courses:

1. Legal Issues in Healthcare
2. Ethical Foundations in Healthcare
3. Contemporary Ethical Dilemmas in Healthcare
4. HIPAA and Patient Privacy
5. Medication Errors
6. Social Media and Healthcare
7. Organ and Tissue Donation and Recovery
8. Workplace Violence in Healthcare

CLASS FEE: \$109

Enroll anytime for this online course.

Learn more at  
[waubonsee.edu/ProHealth](http://waubonsee.edu/ProHealth)



## CERTIFIED ELECTRONIC HEALTH RECORDS SPECIALIST

In this program, you'll learn the ins and outs of electronic health records (EHR) systems, along with the many benefits they offer medical practices. You'll get hands-on practice using real EHR software as you prepare to take the National Healthcareer Association's (NHA) CEHRS certification exam.

CLASS FEE  
(with exam voucher): \$1,795

Enroll anytime for this online course.

Learn more at  
[waubonsee.edu/ProHealth](http://waubonsee.edu/ProHealth)

## CERTIFICATE IN STRESS MANAGEMENT

In this certificate program, you'll explore the physiological, social and psychological impacts of stress while studying modalities to get stress under control.

NOTE: This certificate does constitute 14 continuing education contact hours for nurses, diabetes educators and massage therapists.

CLASS FEE: \$119

Enroll anytime for this online course.

Learn more at  
[waubonsee.edu/ProHealth](http://waubonsee.edu/ProHealth)

## CERTIFICATE IN VIOLENCE PREVENTION AND AWARENESS

Examine the various instances of violence that you may encounter in your work as a medical professional and gain the information you need to respond and/or prevent them. The program begins by examining workplace violence, before exploring domestic violence, elder abuse, child abuse, including "shaken baby syndrome," and the various forms of sexual assault.

NOTE: This certificate does constitute 13 continuing education contact hours for nurses, diabetes educators and massage therapists.

CLASS FEE: \$109

Enroll anytime for this online course.

Learn more at  
[waubonsee.edu/ProHealth](http://waubonsee.edu/ProHealth)

## CLINICAL DENTAL ASSISTANT

Learn about every aspect of professional dental assisting, including invaluable real-world perspectives from experienced dental assistants and essential information about anatomy and physiology, preventive dentistry, patient care and communication, radiology, pharmacology, anesthesia, assisting in specialty practices, employment strategies, and much more. Upon finishing this program, you'll be prepared to successfully complete the radiology and infection control portions of the Dental Assisting National Board\* exam.

CLASS FEE: \$1,995

Enroll anytime for this online course.

Learn more at  
[waubonsee.edu/ProHealth](http://waubonsee.edu/ProHealth)

## W CPC MEDICAL BILLING AND CODING PROGRAM

This program offers valuable training in legal, ethical, and regulatory concepts that are central to the field, including HIPAA compliance and third-party guidelines for filing insurance claims. You will gain hands-on, practical experience in medical billing and coding and work with the main coding manuals: ICD-10-CM, ICD-10-PCS, CPT, and HCPCS Level II. You will also learn how to code diagnoses, services and procedures for all systems of the body.

CLASS FEE (with exam voucher): \$3,090

Enroll anytime for this online course.

Learn more at  
[waubonsee.edu/ProHealth](http://waubonsee.edu/ProHealth)



**PHARMACY TECHNICIAN**

This program will prepare you for entry-level pharmacy technician positions by teaching you medical and pharmaceutical terminology, basic anatomy related to the pharmacology of medications, and pharmaceutical calculations. The Pharmacy Technician Program will give you hands-on practice in retail pharmacy procedures through an online lab module. You'll learn what information is necessary to process prescriptions and physician orders and apply that knowledge to fill mock prescriptions. The curriculum also includes the ethics of pharmacy practice and education about prescription medications, patient care and interaction, and charges and reimbursement.

CLASS FEE (with exam voucher): \$2,495

Enroll anytime for this online course.

Learn more at  
[waubonsee.edu/ProHealth](http://waubonsee.edu/ProHealth)

**LEADERSHIP**

Register for all 10 courses to earn Waubonsee's Frontline Supervisor Certification!

**FUNDAMENTALS OF SUPERVISION**

Leaning the basics of being a leader is important. Employees who excel their expectations in their daily work are often promoted into leadership roles. Transitioning from support staff to a leader can at times be difficult. Though technical and functional expertise is essential, they don't necessarily equate to being a good leader. Without the skills needed to communicate effectively, engage and lead others, the transition can be difficult or unsuccessful.

CLASS FEE: \$109

**LDR900.001 (21431)**  
9:00am- 11:00am F  
DWNTN244 Expert  
Meets on: Jan. 18

**RESOLVING CONFLICT**

Conflict in the workplace is an inevitable part of the workplace. Whether between individuals or teams, at some point, a conflict will arise and will need to be addressed. Different people with different goals and needs come into conflict and often result in personal animosity. But resolving conflict does not need to be a negative experience, in fact, managing conflict can be a catalyst for positive change.

CLASS FEE: \$179

**LDR901.001 (21432)**  
9:00am- 1:00pm F  
DWNTN244 Expert  
Meets on: Jan. 25

**WORKING WITH DIFFICULT PEOPLE**

Have you ever wondered "Why can't I get along with that person?" "What did I do to him/her?" Chances are that you were simply dealing with a difficult person. We try our best to avoid people we feel are difficult. Is it the behavior that is difficult or a difficult person. You will learn tools and skills to use in day to day interactions with individuals who display difficult behaviors.

CLASS FEE: \$179

**LDR902.001 (21433)**  
9:00am- 1:00pm F  
DWNTN244 Expert  
Meets on: Feb. 1

**LEADING EFFECTIVELY DURING CHANGE**

The one thing that will be consistent in any person's life is change. Change happens all around us — at home, in our communities and at work. Change is unavoidable. Embracing change is easier when we know what the changes are, why they are happening, the benefits they will bring and how to overcome barriers to change.

CLASS FEE: \$179

**LDR903.001 (21434)**  
9:00am- 1:00pm F  
DWNTN244 Expert  
Meets on: Feb. 8

**CUSTOMER EXPERIENCE**

Customer service has the power to form a customer's entire perception of an organization. One bad experience can result in losing not only that customer but future customers as well. You do not want your customers to just be satisfied you also want them to become loyal. However, even an unhappy customer will become loyal if you are fast, fair and friendly in resolving their complaint. Give customers the experience to make them want to become your customer for life.

CLASS FEE: \$179

**LDR904.001 (21435)**  
9:00am- 1:00pm F  
DWNTN244 Expert  
Meets on: Feb. 15

**PRIORITIZING MY TIME**

What is important? What must be done? What can wait until later? We are all busy and feel as if there is not enough time in the day. From personal responsibilities, work projects, and life happening we all want and need more time. Prioritization is an essential skill that we must master to make the best use of our efforts and those of our teams. This skill also helps create an atmosphere of calmness and fluidity that allows us to focus our energy and attention on things that are truly productive.

CLASS FEE: \$179

**LDR905.001 (21438)**  
9:00am- 1:00pm F  
DWNTN244 Expert  
Meets on: Feb. 22

*For more information  
on how to read this  
schedule, see page 45.*

# MANUFACTURING

## BUILDING TEAMS THAT WORK

Are you apart of a team that works or just a part of a team? Teamwork is critical to an organization's productivity, success rate and profitability. Teams solve problems better and accomplish tasks faster. Each individual on a team has unique qualities that make that team stronger and more effective. Learning what those qualities are and what role they play on the team will help to create an environment of trust and success.

CLASS FEE: \$179

**LDR906.001 (21439)**

9:00am- 1:00pm F  
DWNTN244 Expert

Meets on: March 1

## CREATING A POSITIVE CULTURE

Working in an environment that is pleasant and warm calms the employees and contributes to their level of success. People want to work with positive, friendly, caring people. This class will explore opportunities, define methodologies and look at some of the opportunities and limitations of promoting a positive culture within an organization.

CLASS FEE: \$179

**LDR907.001 (21443)**

9:00am- 1:00pm F  
DWNTN244 Expert

Meets on: March 8

## COMMUNICATION STYLES AND SKILLS

The best leaders know that effective communication is as much about listening to others as it is about the words they speak. Communication skills are essential to the success of a leader. How information is shared in the workplace is an important and extremely critical business tool. This will focus on oral communication, rather than written communication.

CLASS FEE: \$179

**LDR908.001 (21444)**

9:00am- 1:00pm F  
DWNTN244 Expert

Meets on: March 15

## IDENTIFYING YOUR STRENGTHS

Are you passionate about your job? Do you have the opportunity to do what you do best every day? Most people do not have that opportunity. People do not focus on their strengths they spend too much time focusing on their shortcomings. In this course you will take a strength finder assessment to uncover hidden talents and strengths that will be invaluable throughout your entire career.

CLASS FEE: \$179

**LDR909.001 (21445)**

9:00am- 1:00pm F  
DWNTN244 Expert

Meets on: March 22

## MANUFACTURING

### W CERTIFIED SIX SIGMA: GREEN BELT

Do you want to improve your business credentials or enter a new career as a quality specialist? This course teaches the framework of the ASQ Six Sigma Green Belt body of knowledge and how to apply key process improvement methods and concepts in various settings, including manufacturing, service, and not-for-profit organizations. This course will allow you to test and apply the framework through quizzes, engaging exercises, fun games and case studies.

CLASS FEE: \$1,895

Enroll anytime for this online course.

Learn more at  
[waubonsee.edu/ProManufacturing](http://waubonsee.edu/ProManufacturing)

## MANUFACTURING FUNDAMENTAL

Learn the basic skills required to work in the manufacturing field. Discover the role of production design, process planning and the heart of 13 different manufacturing processes. See how successful organizations use costs to communicate manufacturing progress and how to effectively develop short- and long-term budgets. Witness how the application of technology turns an ordinary company into a high-performing organization, while also finding out how ISO 9000 and enterprise resource planning (ERP) make the most of a manufacturer's potential.

CLASS FEE: \$115

Enroll anytime for this online course.

Learn more at  
[waubonsee.edu/ProManufacturing](http://waubonsee.edu/ProManufacturing)

## MANUFACTURING APPLICATIONS

Learn how to apply the principles and concepts of manufacturing. Discover the nature of strategy and learn how it leads to the development of manufacturing strategy. Understand the purpose of customer demand forecasting and find out what forecasting methods are suitable for which situations. Explore the nature of planning and learn how to effectively use Gantt charts and the precedence diagram method.

CLASS FEE: \$115

Enroll anytime for this online course.

Learn more at  
[waubonsee.edu/ProManufacturing](http://waubonsee.edu/ProManufacturing)



## **STAY CONNECTED TO THE LATEST NEWS AND UPDATES — SUBSCRIBE TO OUR E-NEWSLETTERS!**

*Opt-in to one or more of our free e-newsletters to get course and event updates, tips for living and working better, and more!*

### **COMMUNITY EDUCATION SIGN-UP**

[waubonsee.edu/live](http://waubonsee.edu/live)

### **PROFESSIONAL DEVELOPMENT SIGN-UP**

[waubonsee.edu/work](http://waubonsee.edu/work)



## *Illinois Small Business Development Center at Waubonsee Community College*

*Through the Small Business Development Center (SBDC), small business owners, both prospective and existing, can obtain essential management, marketing and financial coaching. We offer FREE one-on-one coaching and a wide variety of low-cost events and workshops to help make your business a success.*

## **THE SBDC PROVIDES:**

### ***One-On-One Business Coaching and Advising***

Our experienced small business advisors can help meet your individual business needs.

### ***Workshops***

Gain insight into managing a small business—from government regulations to financing resources.

### ***Business Plan Preparation Assistance***

Learn how to create a realistic plan to guide your business.

### ***Financial Analysis***

See how you can improve your cash flow and better manage your assets.

### ***Strategic Planning for Growth***

Plot your course for the future to promote growth and expansion.

### ***Specialty Expertise***

The SBDC has experts to help you with QuickBooks, marketing, financing, strategic planning questions and more!



**All courses will be held at Waubonsee's Aurora Downtown Campus.**  
Visit [www.waubonseetickets.com](http://www.waubonseetickets.com) for more information and to register.

Class Schedule 2019	Title	Time
January 16	Starting Your Business in IL	6 - 9 PM
February 19	Starting Your Business in IL	6 - 9 PM
March 5	Patent, Trademark, Copyright Law	6 - 9 PM
March 13	Social Media Boot Camp	6 - 9 PM
March 20	Starting Your Business in IL	6 - 9 PM
April 10	DIY: How to Plan, Build, and Launch a Website Yourself	1 - 5 PM
April 18	Starting Your Business in IL	6 - 9 PM
May 8	Google Business & Analytics	6 - 9 PM
May 14	Starting Your Business in IL	1 - 4 PM

**WE CAN HELP YOU:**

- Perform a financial checkup
- Troubleshoot management issues
- Develop marketing strategies
- Create a business plan
- Identify funding opportunities
- Plan growth strategies

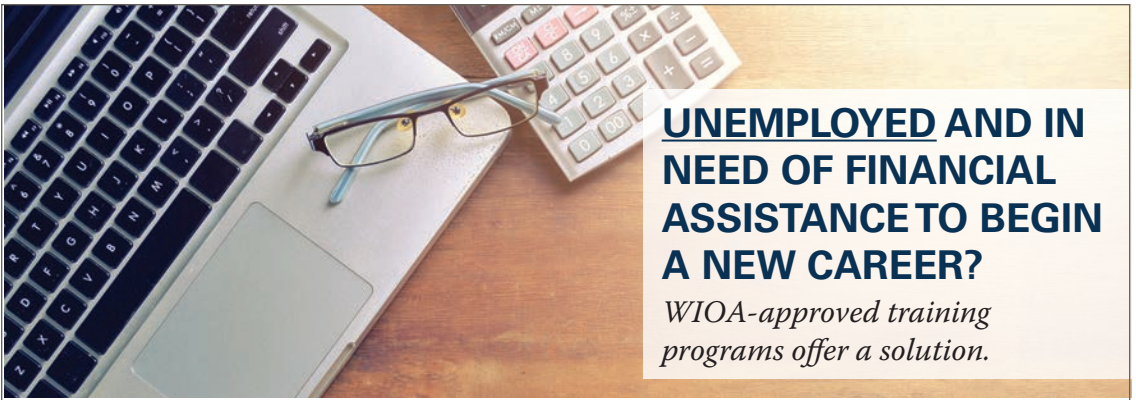
*Services available in English and Spanish.*



**Schedule a FREE Consultation Now:**

[www.waubonsee.edu/sbdc](http://www.waubonsee.edu/sbdc)  
(630) 906-4143  
[sbdc@waubonsee.edu](mailto:sbdc@waubonsee.edu)

*The SBDC at Waubonsee Community College is funded in part through a cooperative agreement with the U.S. Small Business Administration and the Department of Commerce and Economic Opportunity.*




# UNEMPLOYED AND IN NEED OF FINANCIAL ASSISTANCE TO BEGIN A NEW CAREER?

*WIOA-approved training  
programs offer a solution.*

The Workforce Innovation and Opportunity Act (WIOA) provides financial assistance for the unemployed to receive training in high-demand occupations. Illinois workNet Centers can provide information on these programs and help you reach your training and employment goals.

**STEP 1:** Visit [www.illinoisworknet.com](http://www.illinoisworknet.com) for more information or stop by one of the Illinois workNet Centers.

**STEP 2:** If you have been approved for WIOA funds, please contact Workforce Education and Training at (630) 466-2356 to confirm program specifics. Look for the WIOA symbol, marking approved programs throughout this schedule.

 = WIOA–approved program



## ONLINE SHORT COURSE BUNDLES

[www.ed2go.com/waubonsee](http://www.ed2go.com/waubonsee)

*You can take all of our courses from the comfort of your home or office at the times that are most convenient to you. A new session of each course starts monthly. Most courses run for six weeks and are composed of 12 lessons, representing 24 hours of instruction. You can ask questions and give or receive advice at any time during the course. Upon successful completion of the course, you will be able to download a certificate of completion.*

### AGING AND HEALTH BUNDLE

- Certificate in Healthy Aging
- Certificate in Gerontology
- Certificate in Brain Health

### ADMINISTRATIVE ASSISTANT SUITE

- Administrative Assistant Fundamentals
- Administrative Assistant Applications
- Effective Business Writing

### SQL SERIES: DATABASE DEVELOPMENT

- Introduction to SQL
- Intermediate SQL

### IT NETWORK SECURITY

- Introduction to PC Security
- Hack Your Way to Security
- CompTIA Security+ Certification Prep
- CompTIA Security+ Certification Prep 2



# NEED TRAINING FOR YOUR EMPLOYEES? YOU DON'T HAVE TO LOOK FAR FOR HELP.



## Turn to the **PROs** in Corporate Training at Waubonsee Community College!

- **PROVEN** – Trust in our 25-year history of providing customized training to local businesses at your location or ours. In the past four years, we've partnered with more than 100 companies to provide quality training.
- **RELEVANT** – Learn from our experts who will customize training to fit your specific needs. Training is exclusive to your company, covering relevant topics and skills, maximizing your time and money.
- **OPTIMIZED** – Leverage our resources to update employees' fundamental skills, and attain necessary certifications for employment. Investment in training pays off through increased productivity for your company, along with lower turnover rates.

**Start your training plan today!**

call (630) 906-4152

email [train@waubonsee.edu](mailto:train@waubonsee.edu)

or visit [www.waubonsee.edu/corptrain](http://www.waubonsee.edu/corptrain)



**WAUBONSEE**  
COMMUNITY COLLEGE

*Corporate Training*

*Waubonsee does not discriminate based on any characteristic protected by law in its programs and activities.*



# COURSE CALENDAR

## COURSES STARTING IN JANUARY

DATE	COURSE	CRN	Page #			
1/03/19	BLS Provider CPR	21337	28	1/19/19	Hrtsvr CPR/AED Adlt,Chld,Infnt	21333 29
1/05/19	BLS Provider CPR	21346	28	1/19/19	Excel Level 1	21458 33
1/07/19	Beginning Photography I	21399	4	1/22/19	Bookkeeping-Small Busn Success	21447 30
1/08/19	BLS Provider CPR	21338	28	1/22/19	SmBus:Get Yours Books in Shape	21449 30
1/09/19	Intermediate Photography	21496	5	1/22/19	Class Guitar I	21408 3
1/12/19	Raise Your Score - SAT	21497	12	1/22/19	Vocal Ensemb:Waubonsee Chorale	21412 4
1/12/19	Raise Your Score - SAT Math	21498	13	1/23/19	Class Instruction in Piano I	21407 3
1/14/19	BLS Provider CPR	21339	28	1/23/19	All College Steel Band	21414 4
1/16/19	Hatha Yoga for Beginners	21472	11	1/25/19	Access Level 2	21457 31
1/17/19	Lets Dance! Bllrm,Swng,Latin	21394	3	1/25/19	Resolving Conflict	21432 38
1/17/19	Professional Dog Trainer II	21404	13	1/25/19	Concert Band	21411 4
1/18/19	Lets Dance! Bllrm,Swng,Latin	21395	3	1/28/19	Jazz Ensemble	21409 4
1/18/19	Access Level 1	21456	31	1/29/19	Make Your Busn More Profitable	21451 30
1/18/19	Fundamentals of Supervision	21431	38	1/30/19	Reading Stars: Intro-Astrology	21480 15

## COURSES STARTING IN FEBRUARY

DATE	COURSE	CRN	Page #			
2/01/19	Working With Difficult People	21433	38	2/18/19	Beginning Photography II	21400 5
2/02/19	Public Access TV Prod Training	21429	16	2/19/19	Cooking 101	21415 14
2/04/19	Line and Wash Watercolor	21391	2	2/19/19	Electronic Music Ensemble	21413 3
2/05/19	Bookping Ess: King of Reports	21452	30	2/19/19	Rock Music Ensemble	21410 4
2/06/19	Food Serv/San Mgr Cert Exam Pr	21420	34	2/19/19	Get Hooked! Crochet Basics	21426 15
2/07/19	Wedding and Event Planner	21390	14	2/20/19	Percussion Ensemble	21425 4
2/08/19	Lead Effectively During Change	21434	38	2/22/19	Prioritizing My Time	21438 38
2/09/19	Excel Level 2	21459	33	2/23/19	Heartsaver First Aid	21335 29
2/09/19	Practice Makes Perfect: SAT	21499	12	2/23/19	Hrtsvr 1st Aid-Adlt/Child/Inf	21351 29
2/12/19	BLS Provider CPR	21340	28	2/25/19	Learn a Little Spanish	21402 17
2/12/19	Computers 101	21440	16	2/26/19	AHA CPR Instructor Renewal	21353 30
2/15/19	Customer Experience	21435	38	2/26/19	Learn a Little Italian	21476 17
2/16/19	BLS Provider CPR	21347	28	2/27/19	Hatha Yoga Continued	21473 11
2/18/19	Home Inspection	21388	34			

## COURSES STARTING IN MARCH

DATE	COURSE	CRN	Page #			
3/01/19	Ceramic Arts: Handbld/Wheel Th	21448	2	3/09/19	Discover Reiki Healing	21478 11
3/01/19	Building Teams that Work	21439	39	3/12/19	Shake Rattle & Roll at Starved	21292 22
3/02/19	Ceramic Arts: Handbld/Wheel Th	21450	2	3/13/19	Pen and Ink Drawing	21392 2
3/02/19	Excel Level 3	21460	34	3/15/19	Communication Styles & Skills	21444 39
3/02/19	Raise Your Score - ACT Math	21501	12	3/19/19	AHA Instr Ct-BLS CPR/Hrtsv/1st	21350 29
3/02/19	Raise Your Score - ACT English	21500	12	3/19/19	Stay Hooked! Crochet Continued	21427 15
3/02/19	Publ Access TV/Int Editing/DVD	21430	16	3/19/19	Improv for Beginners	21491 5
3/05/19	BLS Provider CPR	21341	28	3/21/19	AHA CPR Instructor Renewal	21354 29
3/06/19	Hrtsvr CPR/AED Adlt,Chld,Infnt	21332	29	3/21/19	How to Sell Your Treasures Onl	21424 16
3/06/19	Intro - Microsoft Outlook 2013	21454	32	3/22/19	Identifying Your Strengths	21445 39
3/08/19	Creating a Positive Culture	21443	39	3/23/19	Safe Sitter® (1-day with CPR)	21489 18
3/09/19	BLS Provider CPR	21348	28	3/26/19	Beginning Drawing	21398 2

3/26/19	Cooking 102	21416	14	3/30/19	Minecraft Saturdays - ORE	21493	18
3/26/19	Microsoft Office at Home	21441	16	3/30/19	Minecraft Saturdays - World	21492	18
3/26/19	Horsemanship I	21405	11	3/30/19	Discover Reiki Healing	21479	11
3/28/19	Horsemanship II	21406	11	3/30/19	Practice Makes Perfect:ACTTst	21502	12
3/29/19	Communication Styles & Skills	21446	39				

## COURSES STARTING IN APRIL

DATE	COURSE	CRN	Page #				
4/01/19	Intermediate Photography	21401	5	4/17/19	BLS Provider CPR	21343	28
4/02/19	BLS Provider CPR	21342	28	4/17/19	Food Serv/San Mgr Cert Exam Pr	21421	34
4/04/19	Wedding Dance	21396	3	4/17/19	What's Cookin', Morton?	21291	22
4/05/19	Keep Dancing! Blrm,Swg,Ltn Ctd	21397	3	4/20/19	Hrtsvr CPR/AED Adlt,Chld,Infnt	21334	29
4/06/19	Minecraft Saturdays	21495	18	4/20/19	Heartsaver First Aid	21336	29
4/06/19	Minecraft Saturdays - Magic	21494	18	4/20/19	Hrtsvr 1st Aid-Adlt/Child/Inf	21352	29
4/10/19	Hatha Yoga Continued	21474	11	4/22/19	BLS Provider CPR	21344	28
4/12/19	Explore the Stars- Telescope	21475	16	4/23/19	Genealogy 101	21442	14
4/15/19	Learn More Spanish	21403	17	4/27/19	AHA Instr Ct-BLS CPR/Hrtsv/1st	21423	29
4/16/19	Mental Health First Aid	21418	28	4/27/19	Professional Drone Pilot Test	21393	14
4/16/19	Beginning Italic Calligraphy	21428	2	4/27/19	Safe Sitter® (1-day with CPR)	21490	18
4/16/19	Learn More Italian	21477	17				

## COURSES STARTING IN MAY

DATE	COURSE	CRN	Page #				
5/04/19	BLS Provider CPR	21349	28	5/13/19	Home Inspection	21389	34
5/08/19	BLS Provider CPR	21345	28	5/15/19	Food Serv/San Mgr Cert Exam Pr	21422	34
5/08/19	BLS Provider CPR Skills	21355	28	5/16/19	8 on 80	21293	22

# Sugar Grove Campus Map

4S783 State Route 47, Sugar Grove, IL 60554





Registration Information and Payment/Refund Policies

Where classes meet

Waubonsee Community College,  
Sugar Grove Campus, 4S783 State  
Route 47, Sugar Grove

<b>A</b> .....	Building A
<b>AB</b> .....	Auto Body
<b>AKL</b> .....	Akerlow Hall
<b>APC</b> .....	Academic and Professional Center
<b>AUD</b> .....	Auditorium
<b>BDE</b> .....	Bodie Hall
<b>CER</b> .....	Ceramics
<b>COL</b> .....	Collins Hall
<b>DKN</b> .....	Dickson Center
<b>ERK</b> .....	Erickson Hall (Total Fitness Center)
<b>FLD</b> .....	Field House
<b>HCC</b> .....	Henning Academic Computing Center
<b>OBS</b> .....	Observatory
<b>OPS</b> .....	Campus Operations
<b>SCI</b> .....	Science Building
<b>STC</b> .....	Student Center
<b>VON</b> .....	Von Ohlen Hall
<b>WGL</b> .....	Weigel Hall

Other locations

<b>DWNTN</b> ..	Waubonsee Community College, Aurora Downtown Campus, 18 S. River Street, Aurora
<b>FOXVLY</b> ..	Waubonsee Community College, Aurora Fox Valley Campus, 2060 Ogden Ave., Aurora
<b>HUNT</b> .....	Huntoon Stables, 507 Oak St., North Aurora
<b>MIDDAY</b> .....	Mid-Day Play 703 Eva Lane, Sandwich
<b>OFD1</b> .....	Oswego Fire Protection District Station 1 3511 Woolley Rd, Oswego
<b>OHS</b> .....	Oswego High School, 4250 Rt. 71, Oswego
<b>OVERMN</b> .....	Over the Moon Positive Dog Training, 2S478 Partridge Rd, Batavia
<b>PLANO</b> ....	Waubonsee Community College, Plano Campus, 100 Waubonsee Drive, Plano

How to Read the Class Schedule

**Name of course**

**Cost**

**Course/section number**

**Class time**

**Location**

**INTRODUCTION TO MICROSOFT OFFICE**

This course provides an introductory overview to software that is widely used in a variety of work environments: Access, Excel, PowerPoint and Word. Prereq: Basic familiarity with Windows.

**CLASS FEE: \$425**

**OPS006.600 (11356)**

6 p.m. – 9 p.m., W  
DWNTN243 Smith  
Meets: Oct. 3–Nov. 7

**Description**

**Course Reference Number (CRN)**

**Meeting day(s)**

**Instructor**

F.Y.I.

Books and Materials

Many classes do not require textbooks, but if materials are needed at the first meeting, it will be noted in the class listing. Books can be purchased at the Waubonsee bookstores.

Special Accommodations

To find out about interpreting services for the hearing impaired, call (630) 466-2928 (TDD/FAX). For disability accommodation, call (630) 466-2564, approximately one month before the start of class.

Course Cancellation

We cannot guarantee that all activities listed in this schedule will be available when you register. We reserve the right to cancel activities if there is insufficient enrollment. If your activity is canceled, you may select another activity or receive a refund. An attempt will be made to notify you by phone or mail when it is necessary to cancel an activity. For students wishing to drop a class(es), please refer to the refund policy.

**EARLY REGISTRATION IS ADVISED**  
because many classes fill rapidly. Also,  
early registration can help avoid class  
cancellation.

# 4 Easy Ways to Register



## By mail:

Registration and Records  
Waubonsee  
Community College  
4S783 State Route 47  
Sugar Grove, IL 60554–  
9454



## Online:

[mywcc.waubonsee.edu](http://mywcc.waubonsee.edu)  
For students who have and  
know their X-number.



## By fax:

(630) 466-4964



## Walk in:

Sugar Grove Campus  
Aurora Downtown Campus  
Aurora Fox Valley Campus  
Plano Campus



## Need help?

Call Community Education  
at (630) 466-2360  
or Workforce Education  
and Training  
at (630) 466-2356.

- **Employer Payments** — If your employer is paying your tuition and fees, and should be billed directly, a letter from your company, including the contact name and company address (on company letterhead), is required at the time of registration. An employer can also be set up as an authorized user for online payments.

**Questions?** Call or visit the Bursar Office, second floor of the Student Center, Sugar Grove Campus, (630) 466-5705.

## Additional Fees

Insufficient funds charge:	\$25
Late payment fee:	\$20

## How to Pay:

- **Mail** along with registration form to:  
Registration and Records  
Waubonsee Community College  
4S783 State Route 47  
Sugar Grove, IL 60554–9454
- **Online** payment system at [www.waubonsee.edu](http://www.waubonsee.edu) or at [mywcc.waubonsee.edu](http://mywcc.waubonsee.edu) (credit card or electronic check)
- **Fax** payment information to (630) 466-6637
- **In person** at the Sugar Grove, Aurora Downtown, Aurora Fox Valley or Plano Campuses

## Non-Payment

Waubonsee cancels your enrollment if you do not select a payment option at the time of registration. Please note that payment is required even during college holidays and breaks.

**REFUND POLICY** — Full refund of tuition and fees is granted if the college cancels a course. Course fees will be refunded if a student withdraws at least four calendar days prior to the course start date. Course fee refunds for all online courses and Personal Enrichment activities may have a different policy.

**DISCLAIMER** — Professional Development or Personal Enrichment offerings generally are not approved for college credit, but they may appear on a student's transcript. For more information contact Registration and Records at (630) 466-2370.

## Full or partial payment is due at the time of registration.

Payment options:

- **Full Payment** — Tuition and fees totaling less than \$200 require full payment.
- **Partial Payment** — Pay the required first installment and the remaining balance in monthly payments. (*A \$25 non-refundable service fee is charged for selecting this option; it's automatic when you make the first payment.*) The sooner you register, the more time to pay!

# REGISTRATION FORM

## PERSONAL ENRICHMENT/PROFESSIONAL DEVELOPMENT

Please print in black ink. Use this form if you are registering for noncredit courses only.

Students interested in disability accommodations should contact the Access Center at (630) 466-2564.

### Section I

Student ID (if known) X \_\_\_\_\_ Social Security # \_\_\_\_\_

Last Name: \_\_\_\_\_ First Name: \_\_\_\_\_ MI: \_\_\_\_\_

Birth Date: \_\_\_\_\_ Gender: ☐ M ☐ F US Citizen: ☐ Yes ☐ No

Street Address: \_\_\_\_\_

City: \_\_\_\_\_ State: \_\_\_\_\_ Zip: \_\_\_\_\_

Primary Phone: \_\_\_\_\_ Work Phone: \_\_\_\_\_

Email Address: \_\_\_\_\_ Have you attended here before? ☐ Y ☐ N

### Section II

This information is requested solely to comply with federal and state laws. Your response will not affect consideration of your application or registration.

Are you Hispanic or Latino? ☐ Yes ☐ No

Check one or more of the following race/ethnicity groups:

☐ American Indian/Alaska Native (5)

☐ Black or African American (2)

☐ Native Hawaiian or  
Other Pacific Islander (9)

☐ Asian (4)

☐ Hispanic (3)

☐ White (1)

Please indicate your primary race/ethnicity using the number from the list above \_\_\_\_\_

Are you in the United States on a Visa – Nonresident Alien? ☐ Yes ☐ No

If yes, what is your home country of origin? \_\_\_\_\_

**Please turn over and fill out the rest of the form on the other side.**



**WAUBONSEE**  
COMMUNITY COLLEGE

All information provided to Waubonsee Community College will be kept confidential in accordance with the Family Educational Rights and Privacy Act of 1974. (Public Law 93-380) Waubonsee does not discriminate based on any characteristic protected by law in its programs and activities. To help protect your privacy, please do not email any forms containing confidential information. Waubonsee will not process any registration form received via email.



Section III

Major Code (choose from list below): \_\_\_\_\_

Personal Development	ND50	Intellectual/Cultural Studies	ND60	Health, Safety and Environment	ND70
Community/Civic Development	ND55	Improve Family Circumstances	ND65	Homemaking	ND75

Highest Degree Earned (choose from list below): \_\_\_\_\_

GED	Completed GED	CRT	Completed Certificate	MD	Completed Master's Degree
HS	Completed High School	AD	Completed Associate Degree	PHD	Completed Doctoral Degree
PD	Completed Professional Degree	BD	Completed Bachelor's Degree	OTH	Other
				ND	No Degree Earned

Why are you enrolling at Waubonsee? (choose one): \_\_\_\_\_

1. Course work for transfer to a four-year college.
2. Improve skills needed in present job or to change jobs.
3. Prepare for a future job/career.
4. Perfect or review basic educational or vocational skills.
5. Personal interest or self-development.

Ticket No.	Course Ref. # (CRN)	Course Name	Date and Time	Bldg. and Room	Fees



**Mail to:**  
Registration and Records  
Waubonsee Community College  
4S783 State Route 47  
Sugar Grove, IL 60554-9454  
Fax: (630) 466-4964

Course Fee	
Other	
Total Fees	
Amount Received	

I certify that the above information is complete and correct.

Student Signature: **X** \_\_\_\_\_

**Note:** Payment is due at the time of registration.

☐ Cash   ☐ Check   ☐ VISA   ☐ MasterCard   ☐ Discover   ☐ American Express  
Card # \_\_\_\_\_ - \_\_\_\_\_ - \_\_\_\_\_ Exp. Date: \_\_\_\_\_ CVV: \_\_\_\_\_

Billing Address:

Street Address: \_\_\_\_\_

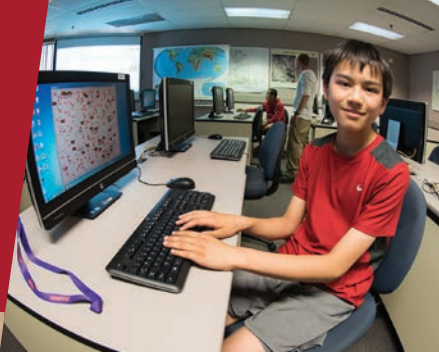
City: \_\_\_\_\_ State: \_\_\_\_\_ Zip: \_\_\_\_\_

Name printed on card: \_\_\_\_\_

Authorized Credit Card Signature: **X** \_\_\_\_\_

# SUPER MINECRAFT SATURDAY

SATURDAYS JUST  
ARE NOT THE  
SAME WITHOUT  
MINECRAFT!



Try our new series of Minecraft  
camps designed for kids age 9-11.  
See page 17.

## STAY CONNECTED TO THE LATEST NEWS AND UPDATES — SUBSCRIBE TO OUR E-NEWSLETTERS!

*Opt-in to one or more of our free e-newsletters to get course and event updates, tips for living and working better, and more!*

### COMMUNITY EDUCATION SIGN-UP

[waubonsee.edu/live](http://waubonsee.edu/live)

### PROFESSIONAL DEVELOPMENT SIGN-UP

[waubonsee.edu/work](http://waubonsee.edu/work)





**WAUBONSEE**  
COMMUNITY COLLEGE

4S783 State Route 47  
Sugar Grove, IL 60554



Whether you are starting a career, changing careers, or updating skills, we have the courses to help you be more competitive.

[waubonsee.edu/work](http://waubonsee.edu/work)

## *Fun for the Entire Family!*

### **Farrell Dillon**

Known for his regular appearances on four seasons of the CW Network's "Masters of Illusion" and the show's live stage production currently in residence at Bally's Las Vegas, Farrell is now bringing his blend of zany comedy and mind-melting magic to the Auditorium stage.

Saturday, March 2, 2019  
7 p.m.

Sugar Grove Campus, Auditorium  
\$19/\$12 children 12 and under

**Purchase tickets at [www.waubonseetickets.com](http://www.waubonseetickets.com)**

