

MATH PATH

Meet with an Academic and Career Advisor to find the right Math Path for you. Your math course sequence depends on your program of study. A grade of C or higher is required to move to the next level.

These diagrams show the math course sequence based on your major. Your starting point will depend on your major, placement test results, or other math readiness indicators.

Note: Developmental courses provide students with the opportunity to strengthen their skills and build a strong foundation for success in college-level coursework. These courses are identified by a prefix code number below 100 and are designed to support academic readiness. While they are not intended for transfer or to fulfill associate degree requirements, they play a crucial role in preparing students for their educational journey.

Choose your pathway from the options below based on your major. Then find the corresponding pathway on the following pages:

Algebra/Trig/Calculus Math Pathway (STEM)

- Computer Science
- Engineering
- Mathematics and Statistics
- Natural and Physical Science
- Pre-Professional: Pre: Med/Dentistry/ Pharmacy/Vet/ PA*

**highly depends on transfer schools*

Statistics Pathway (Health and Social Sciences)

- Human Services/Social work
- Nursing (Transfer)
- Psychology
- Sociology
- Political Science
- Health Information Technology

Business Transfer Pathway

- Accounting (Transfer)
- Business (Transfer)

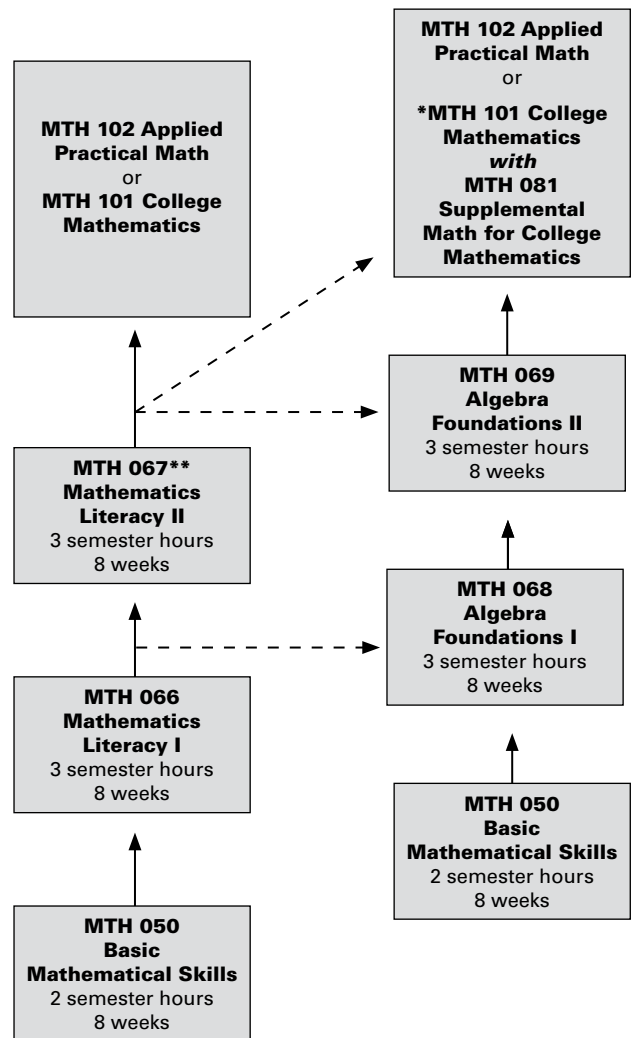
Elementary Education Pathway

- Elementary Education
- Early Childhood Education (Transfer)

College Mathematics & Applied Practical Math Pathway

- Communications
- English
- Fine Arts
- Humanities

College Mathematics & Applied Practical Math Pathway



-- ➔ To learn more about this option, talk to a counselor.

For questions about test prep, ACCUPLACER testing, or scores, contact Learning Assessment and Testing Services at (630) 466-5700.

Not sure what's next? Contact Academic and Career Advising at (630) 466-2361.

* Corequisite courses provide support and are intended to be taken concurrently with the following college-level courses: MTH081/MTH101, MTH087/MTH107, and MTH089/MTH109.

** Placement into Math 067 is only allowed after successfully completing Math 066. Students cannot place directly into Math 067.

*** To learn more about the MTH 075 exemption, talk to an advisor, or submit your transcripts to Registration and Records.

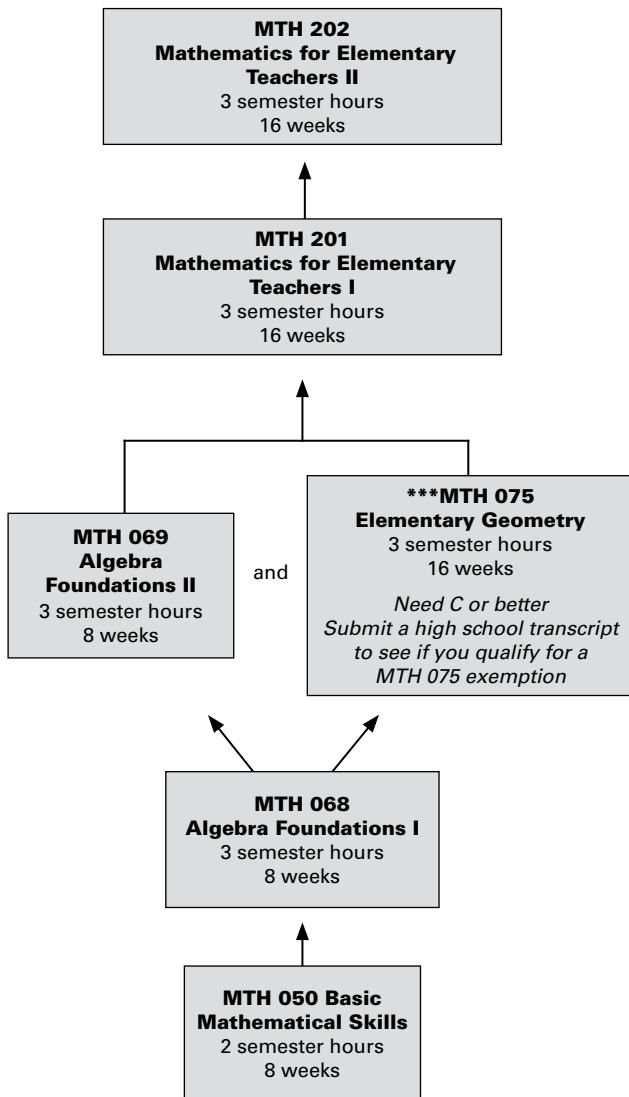
MATH PATH

Meet with an Academic and Career Advisor to find the right Math Path for you. Your math course sequence depends on your program of study. A grade of C or higher is required to move to the next level.

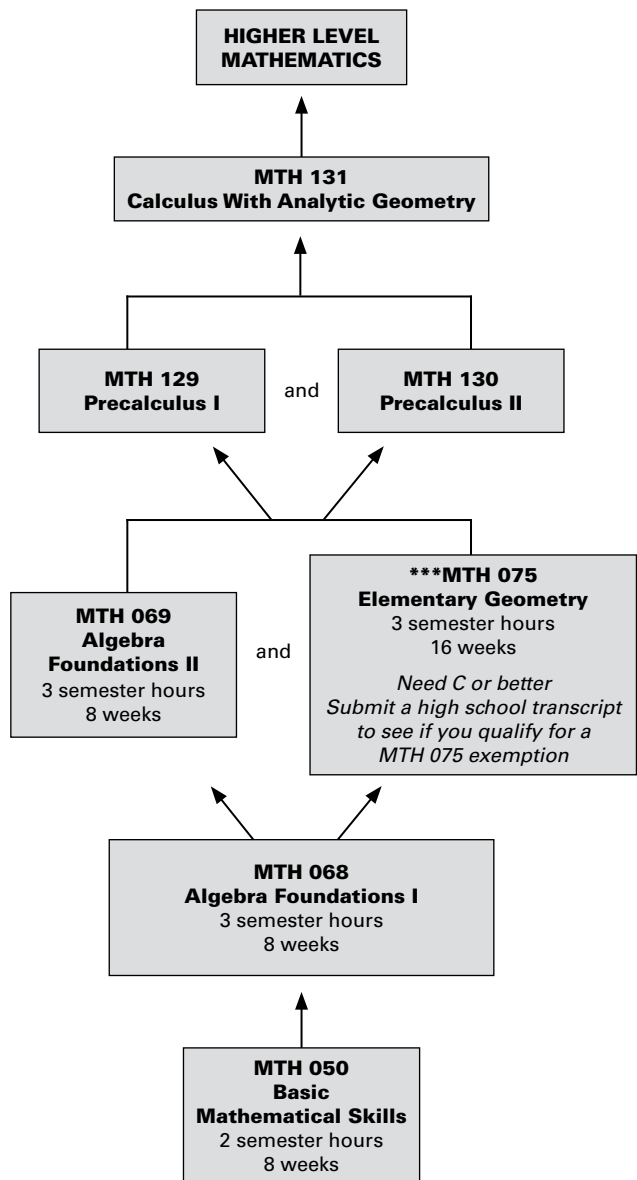
These diagrams show the math course sequence based on your major. Your starting point will depend on your major, placement test results, or other math readiness indicators.

Note: Developmental courses provide students with the opportunity to strengthen their skills and build a strong foundation for success in college-level coursework. These courses are identified by a prefix code number below 100 and are designed to support academic readiness. While they are not intended for transfer or to fulfill associate degree requirements, they play a crucial role in preparing students for their educational journey.

Elementary Education Pathway



Algebra/Trigonometry/Calculus Pathway



For questions about test prep, ACCUPLACER testing, or scores, contact Learning Assessment and Testing Services at (630) 466-5700.

Not sure what's next? Contact Academic and Career Advising at (630) 466-2361.

* Corequisite courses provide support and are intended to be taken concurrently with the following college-level courses: MTH081/MTH101, MTH087/MTH107, and MTH089/MTH109.

*** To learn more about the MTH 075 exemption, talk to an advisor, or submit your transcripts to Registration and Records.

MATH PATH

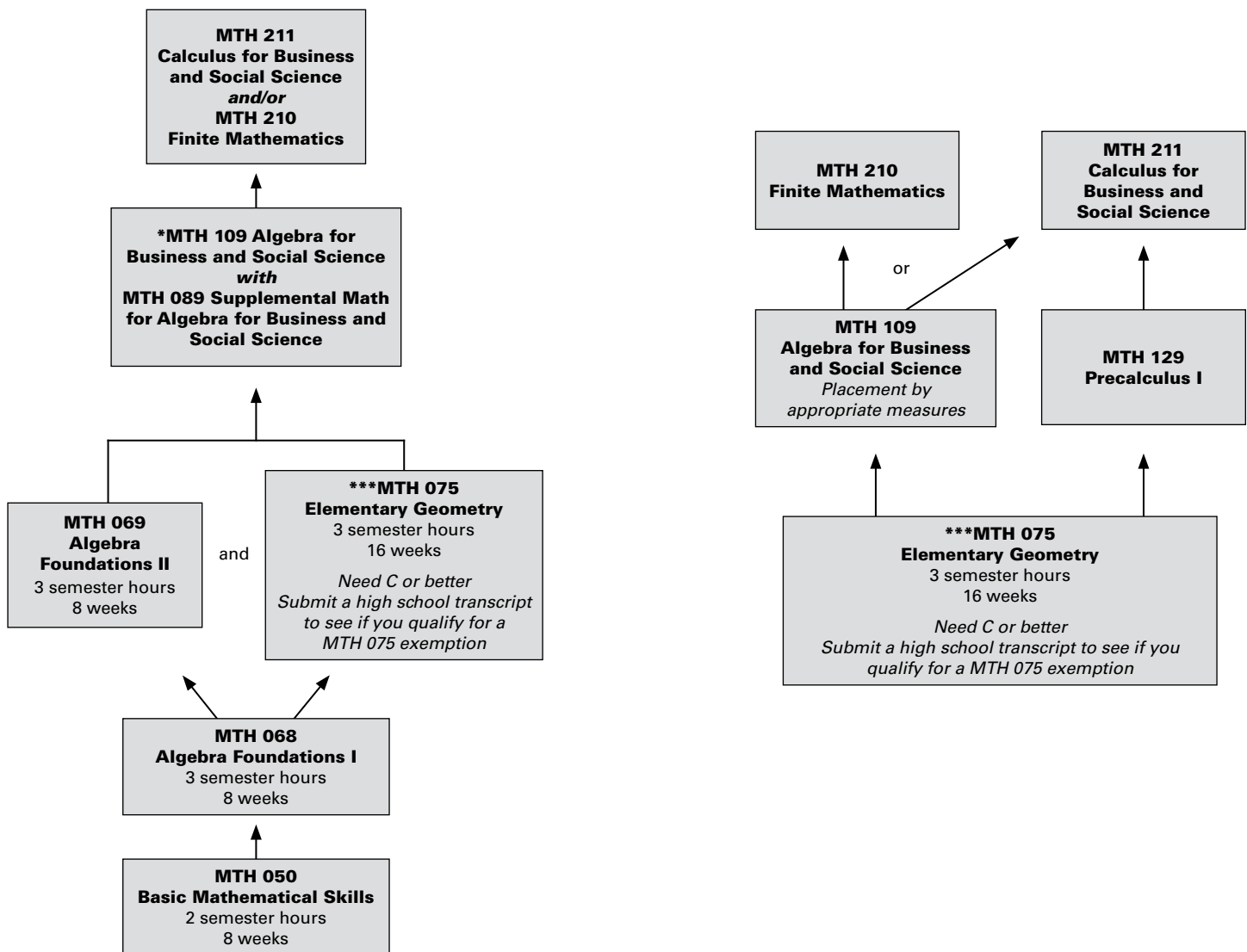
Meet with an Academic and Career Advisor to find the right Math Path for you. Your math course sequence depends on your program of study. A grade of C or higher is required to move to the next level.

These diagrams show the math course sequence based on your major. Your starting point will depend on your major, placement test results, or other math readiness indicators.

Note: Developmental courses provide students with the opportunity to strengthen their skills and build a strong foundation for success in college-level coursework. These courses are identified by a prefix code number below 100 and are designed to support academic readiness. While they are not intended for transfer or to fulfill associate degree requirements, they play a crucial role in preparing students for their educational journey.

Business Transfer Pathway

*Business Majors may be advised to start in the Statistics Pathway.
Please see an Advisor.*



For questions about test prep, ACCUPLACER testing, or scores, contact Learning Assessment and Testing Services at (630) 466-5700.

Not sure what's next? Contact Academic and Career Advising at (630) 466-2361.

** Corequisite courses provide support and are intended to be taken concurrently with the following college-level courses: MTH081/MTH101, MTH087/MTH107, and MTH089/MTH109.*

**** To learn more about the MTH 075 exemption, talk to an advisor, or submit your transcripts to Registration and Records.*

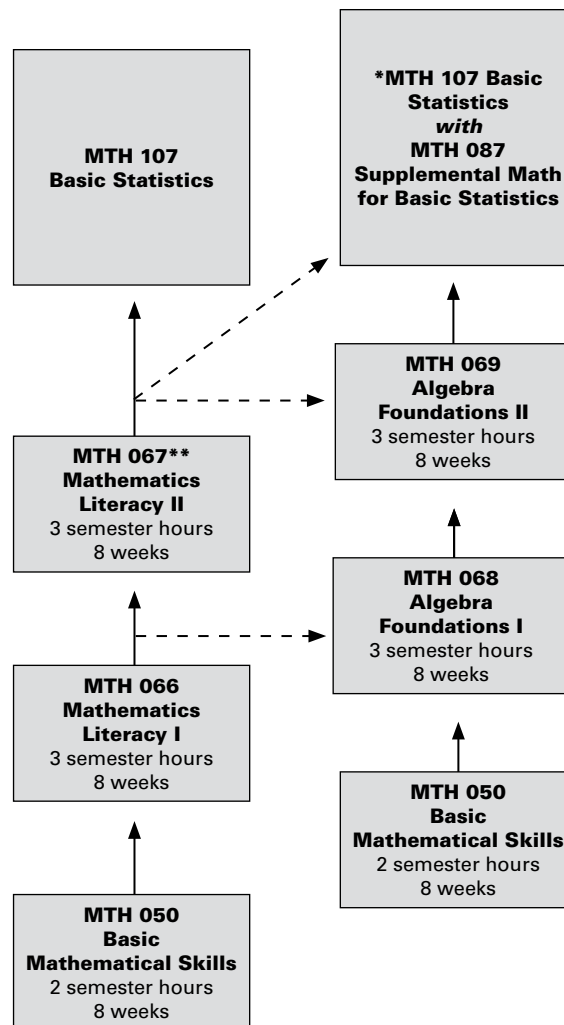
MATH PATH

Meet with an Academic and Career Advisor to find the right Math Path for you. Your math course sequence depends on your program of study. A grade of C or higher is required to move to the next level.

These diagrams show the math course sequence based on your major. Your starting point will depend on your major, placement test results, or other math readiness indicators.

Note: Developmental courses provide students with the opportunity to strengthen their skills and build a strong foundation for success in college-level coursework. These courses are identified by a prefix code number below 100 and are designed to support academic readiness. While they are not intended for transfer or to fulfill associate degree requirements, they play a crucial role in preparing students for their educational journey.

Statistics Pathway



For questions about test prep, ACCUPLACER testing, or scores, contact Learning Assessment and Testing Services at (630) 466-5700.

Not sure what's next? Contact Academic and Career Advising at (630) 466-2361.

-- ➔ To learn more about this option, talk to a counselor.

* Corequisite courses provide support and are intended to be taken concurrently with the following college-level courses: MTH081/MTH101, MTH087/MTH107, and MTH089/MTH109.

** Placement into Math 067 is only allowed after successfully completing Math 066. Students cannot place directly into Math 067.