

# NEW STUDENT ORIENTATION

Welcome to Waubonsee!



WAUBONSEE  
COMMUNITY COLLEGE



# Important Dates – Fall Semester 2026

## 2026

### August

S	M	T	W	T	F	S
						1
2	3	4	5	6	7	8
9	10	11	12	13	14	15
16	17	18	19	20	21	22
23	24	25	26	27	28	29
30	31					

### September

S	M	T	W	T	F	S
		1	2	3	4	5
6	7	8	9	10	11	12
13	14	15	16	17	18	19
20	21	22	23	24	25	26
27	28	29	30			

### October

S	M	T	W	T	F	S
				1	2	3
4	5	6	7	8	9	10
11	12	13	14	15	16	17
18	19	20	21	22	23	24
25	26	27	28	29	30	31

### November

S	M	T	W	T	F	S
1	2	3	4	5	6	7
8	9	10	11	12	13	14
15	16	17	18	19	20	21
22	23	24	25	26	27	28
29	30					

### December

S	M	T	W	T	F	S
		1	2	3	4	5
6	7	8	9	10	11	12
13	14	15	16	17	18	19
20	21	22	23	24	25	26
27	28	29	30	31		

## Registration/ Withdrawal

First day of classes (16-week, first 8-week, first 4-week courses).....	Mon., Aug. 17
Weekend classes begin (15-week, first 7-week courses) - Saturday .....	Aug. 22
Withdrawal deadline for first 4-week courses.....	Sept. 4
12-week & second 4-week courses begin.....	Sept. 14
Last day to claim honor student status designation in a 16-week course.....	Sept. 15
Withdrawal deadline for first 8-week courses.....	Sept. 25
Withdrawal deadline for first 7-week weekend courses.....	Sept. 28
Withdrawal deadline for second 4-week courses .....	Oct. 2
Midterm – last day to change audit enrollment status* .....	Oct. 7
Second 8-week & third 4-week courses begin .....	Oct. 12
Second 7-week weekend courses begin.....	Oct. 17
Withdrawal deadline for third 4-week courses .....	Oct. 30
<b>Spring semester registration begins at 8 a.m. ....</b>	<b>Nov. 2</b>
Withdrawal deadline for 16-week courses .....	Nov. 6
Withdrawal deadline for 15-week weekend courses.....	Nov. 9
Fourth 4-week courses begin.....	Nov. 9
Withdrawal deadline for 12-week courses.....	Nov. 13
Withdrawal deadline for second 7-week weekend courses .....	Nov. 16
Withdrawal deadline for second 8-week courses .....	Nov. 20
Withdrawal deadline for fourth 4-week courses.....	Dec. 4
Semester ends .....	Dec. 12
Grades available to students – Wednesday** .....	Dec. 16

## Refund Deadlines

First 4-week courses .....	Aug. 18
First 8-week courses .....	Aug. 21
First 7-week weekend courses .....	Aug. 24
16-week courses .....	Aug. 28
15-week weekend courses .....	Aug. 28
Second 4-week courses .....	Sept. 15
12-week courses .....	Sept. 18
Third 4-week courses .....	Oct. 13
Second 8-week courses .....	Oct. 16
Second 7-week weekend courses .....	Oct. 19
Fourth 4-week courses .....	Nov. 10

## Holidays

**Labor Day break – Saturday through Monday** (*Classes will not meet*) ..... Sept. 5-7  
**Thanksgiving break – Monday through Sunday** (*Classes will not meet*) . Nov. 23-29

*Withdrawals after refund dates will appear on student transcripts.*

\* *Midterm date is for 16-week courses. Contact Registration and Records for midterm dates for other course lengths.*

\*\* *Grades for courses with shorter lengths are typically available shortly after the completion of each course.*



**PRESS START ON YOUR SEMESTER!**

# WELCOME WEEK FALL 2026

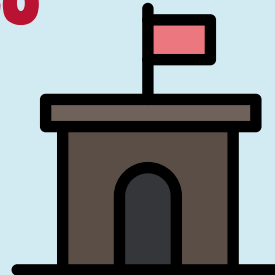
GET READY TO JUMP INTO A WEEK OF FUN AND CLASSIC ADVENTURE! EACH EVENT IS A NEW "LEVEL" TO MEET NEW PEOPLE, WIN PRIZES, AND POWER UP FOR THE SEMESTER AHEAD.

## LEVEL 1: COIN QUEST BINGO

**MONDAY, AUGUST 24 | NOON TO 2 P.M.**

**STUDENT CENTER CAFE, SUGAR GROVE CAMPUS**

JOIN US FOR A FAST-PACED BINGO SESSION FILLED WITH LAUGHS, FRIENDLY COMPETITION, AND PRIZES. WHETHER YOU'RE STOPPING BY BETWEEN CLASSES OR COMING WITH FRIENDS, IT'S AN EASY WAY TO MEET PEOPLE AND START THE WEEK WITH YOUR FIRST WINS.

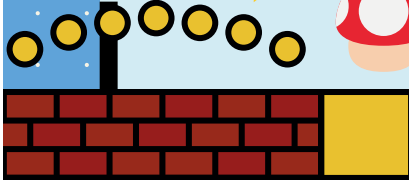


## LEVEL 2: MULTIPLAYER MIX & MINGLE

**WEDNESDAY, AUGUST 26 | NOON TO 2 P.M.**

**STUDENT CENTER LAWN, SUGAR GROVE CAMPUS**

TIME TO SWITCH INTO MULTIPLAYER MODE! DROP IN FOR A RELAXED AFTERNOON OF GAMES. SPIKE A VOLLEYBALL, CHALLENGE FRIENDS TO CORNHOLE, OR DIVE INTO CRAFTS AND BOARD GAMES FOR A CREATIVE TWIST. DON'T MISS THE POWER-UP DRINK STATION, WHERE YOU CAN GRAB A SMOOTHIE AND KEEP THE FUN GOING!

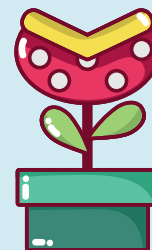


## LEVEL 3: STAR POWER DRIVE-IN

**THURSDAY, AUGUST 27 | SCREENING AT 8 P.M.**

**PARKING LOT N2, SUGAR GROVE CAMPUS**

YOU'VE MADE IT TO THE FINAL LEVEL! WIND DOWN THE WEEK WITH A SCREENING OF THE SUPER MARIO GALAXY MOVIE (PG, 2026) ENJOY FREE SNACKS AND DRINKS AS YOU SETTLE IN AND GET COMFORTABLE FOR A COZY MOVIE NIGHT UNDER THE STARS AS WE CELEBRATE COMPLETING WELCOME WEEK TOGETHER.



## MULTIPLAYER MIX & MINGLE



**Monday, August 24<sup>th</sup>**

**11 A.M. to 2 P.M.**

**Latinx Resource Center (Room 250)**

**Aurora Downtown Campus**

**Tuesday, August 25<sup>th</sup>**

**11:30 A.M. to 3:30 P.M.**

**Library (Room 225)**

**Aurora Fox Valley Campus**



# Important Dates – Spring Semester 2027

## 2027

### January

S	M	T	W	T	F	S
					1	2
3	4	5	6	7	8	9
10	11	12	13	14	15	16
17	18	19	20	21	22	23
24	25	26	27	28	29	30
31						

### February

S	M	T	W	T	F	S
	1	2	3	4	5	6
7	8	9	10	11	12	13
14	15	16	17	18	19	20
21	22	23	24	25	26	27
28						

### March

S	M	T	W	T	F	S
	1	2	3	4	5	6
7	8	9	10	11	12	13
14	15	16	17	18	19	20
21	22	23	24	25	26	27
28	29	30	31			

### April

S	M	T	W	T	F	S
				1	2	3
4	5	6	7	8	9	10
11	12	13	14	15	16	17
18	19	20	21	22	23	24
25	26	27	28	29	30	

### May

S	M	T	W	T	F	S
						1
2	3	4	5	6	7	8
9	10	11	12	13	14	15
16	17	18	19	20	21	22
23	24	25	26	27	28	29
30	31					

## Registration/ Withdrawal

<b>First day of classes (16-week, first 8-week, first 4-week courses).....</b>	<b>Tues., Jan. 19</b>
Weekend classes begin (15-week, first 7-week courses) - Saturday .....	Jan. 23
Withdrawal deadline for first 4-week courses .....	Feb. 5
12-week & second 4-week courses begin.....	Feb. 15
Last day to claim honor student status designation in a 16-week course.....	Feb. 15
Withdrawal deadline for first 7-week weekend courses.....	Feb. 22
Withdrawal deadline for first 8-week courses.....	Feb. 26
Summer semester registration begins at 8 a.m.....	March 1
Withdrawal deadline for second 4-week .....	March 5
Midterm – last day to change audit enrollment status* .....	March 10
Second 8-week & third 4-week courses begin .....	March 22
Second 7-week weekend courses begin.....	March 27
Withdrawal deadline for third 4-week courses .....	April 9
Withdrawal deadline for 15-week weekend courses.....	April 12
Withdrawal deadline for 16-week courses.....	April 16
Fourth 4-week courses begin.....	April 19
Withdrawal deadline for 12-week courses.....	April 23
Withdrawal deadline for second 7-week weekend courses .....	April 26
Withdrawal deadline for second 8-week courses .....	April 30
Fall semester registration begins at 8 a.m. ....	May 3
Withdrawal deadline for fourth 4-week courses.....	May 7
Semester ends .....	May 14
Commencement.....	May 15
Grades available to students – Wednesday** .....	May 19

## Refund Deadlines

First 4-week courses .....	Jan. 20
First 8-week courses .....	Jan. 22
First 7-week weekend courses .....	Jan. 25
16-week courses .....	Jan. 29
15-week weekend courses .....	Jan. 29
Second 4-week courses .....	Feb. 16
12-week courses .....	Feb. 19
Third 4-week courses .....	March 23
Second 8-week courses.....	March 26
Second 7-week weekend courses.....	March 29
Fourth 4-week courses .....	April 20

## Holidays

<b>Martin Luther King, Jr. Day – Monday</b> ( <i>Classes will not meet</i> ) .....	Jan. 18, 2027
<b>Spring break – Monday through Sunday</b> ( <i>Classes will not meet</i> ) .....	March 15-21

*Withdrawals after refund dates will appear on student transcripts.*

\* Midterm date is for 16-week courses. Contact Registration and Records for midterm dates for other course lengths.

\*\* Grades for courses with shorter lengths are typically available shortly after the completion of each course.

# Sugar Grove Campus Map



## NORTH SIDE BUILDINGS

- AKL** Akerlow Hall ⚡
- APC** Academic and Professional Center ⚡
  - Event Room
- AUD** Auditorium ⚡
  - VALEES
- COL** Collins Hall ⚡
  - Library
  - Tutoring Center
- ERK** Erickson Hall ⚡
  - Fitness Center
  - Gym
- FLD** Field House ⚡
- HCC** Henning Academic Computing Center ⚡
- OPS** Campus Operations ⚡
- SCI** Science Building ⚡
- WGL** Weigel Hall

## SOUTH SIDE BUILDINGS

- A** Building A ⚡
    - Human Resources
  - BDE** Bodie Hall ⚡
  - CER** Ceramics
  - DKN** Dickson Center ⚡
    - Administration
    - Arrowhead Room
    - Board Room
    - Bookstore
    - Business Office
    - Campus Police
  - KLN** Kiln Shelter
  - OBS** Observatory
  - STC** Student Center ⚡
    - Academic and Career Advising
    - Access Center for Disability Resources
    - Admissions
    - Assessment
    - Café & Coffee Bar
    - Financial Aid
    - Information Center
    - Registration and Records
    - Student Accounts and Cashier
    - Student Life
  - TEC** Technical Education Center ⚡
  - VON** Von Ohlen Hall ⚡
- N1** North and South Parking Lots  
⚡ Automatic External Defibrillator (AED)

### Sugar Grove Campus Abbreviations:

The abbreviations shown on the map are used in schedules, directories and registration materials.

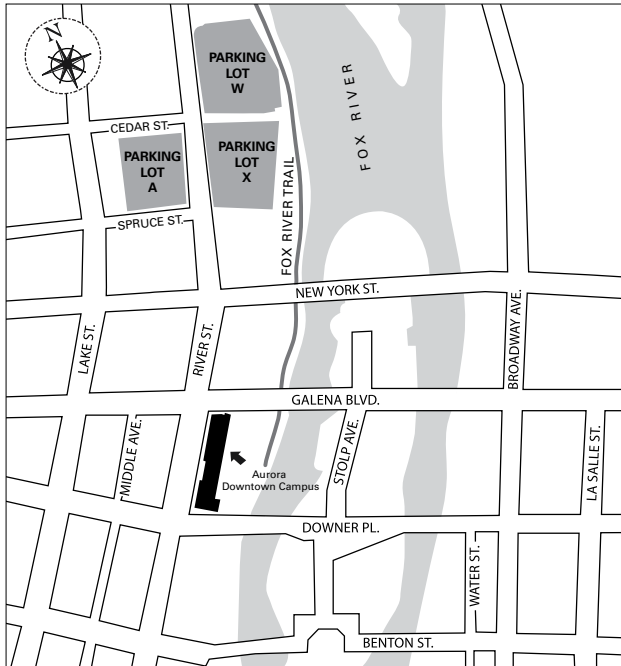
### Where Student Services Are Located:

- Building A** — Human Resources
- Bodie Hall** — Two-story atrium with student lounge areas
- Collins Hall** — Todd Library, Tutoring Center
- Dickson Center** — Bookstore, Campus Police
- Erickson Hall** — Athletics Department, Gymnasium
- Henning Academic Computing Center** — Open computer lab with 120 workstations
- Student Center** — Admissions, Café area, Student Life, Academic and Career Advising, Financial Aid, Registration and Records, Student Accounts and Cashier, Learning Assessment and Testing Services, College Information Center, Student Support Services, Access Center for Disability Resources

### Parking at Sugar Grove Campus:

1. Registration of student cars is not necessary. Use only designated parallel-line parking spaces.
2. Parking is prohibited in unmarked areas or in designated non-parking areas; vehicles parked in unauthorized spaces will be ticketed and could be towed. Use overflow lots or park as directed by cadets.
3. Adhere to all "Rules of the Road" on campus. Drive and park according to posted signs.
4. You may not park vehicles on campus for more than 24 hours without authorization; violations are subject to the fine schedule. Notify Campus Police if vehicle is to be left on campus overnight, contact Campus Police at (630) 466-2552.
5. Temporary handicapped hang tags for parking in reserved spots are available with a doctor's note. They can be obtained at the Campus Police Department, Dickson Center, first floor.

# Aurora Downtown Campus Map



The campus, located at 18 S. River Street, has on-site, short-term parking, limited to 15 minutes, which is strictly enforced. Visit [waubonsee.edu/maps](http://waubonsee.edu/maps) for more parking information.

**Free student parking is available:**

**Lot W** - located north of the campus on the east side of River Street

**Lot X** - located just south of Lot W on the east side of River Street

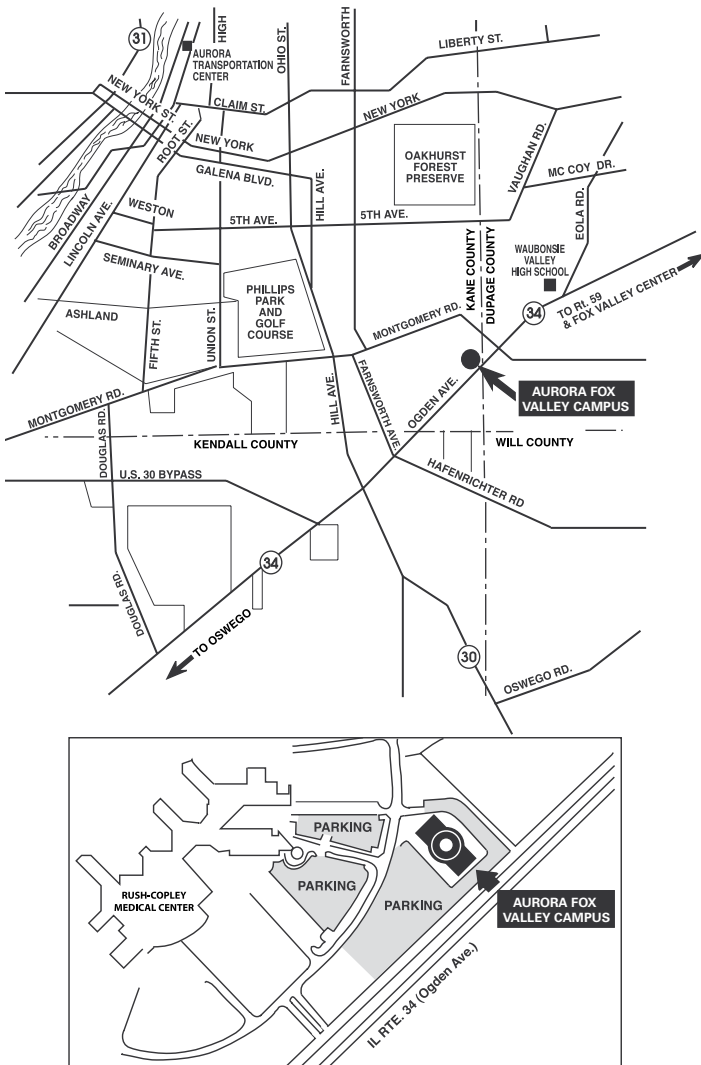
**Lot A** - across from Lot X on the west side of River St. between Spruce and Cedar Streets

*Note: There is a \$15 charge to park in the Hollywood Casino parking garage.*

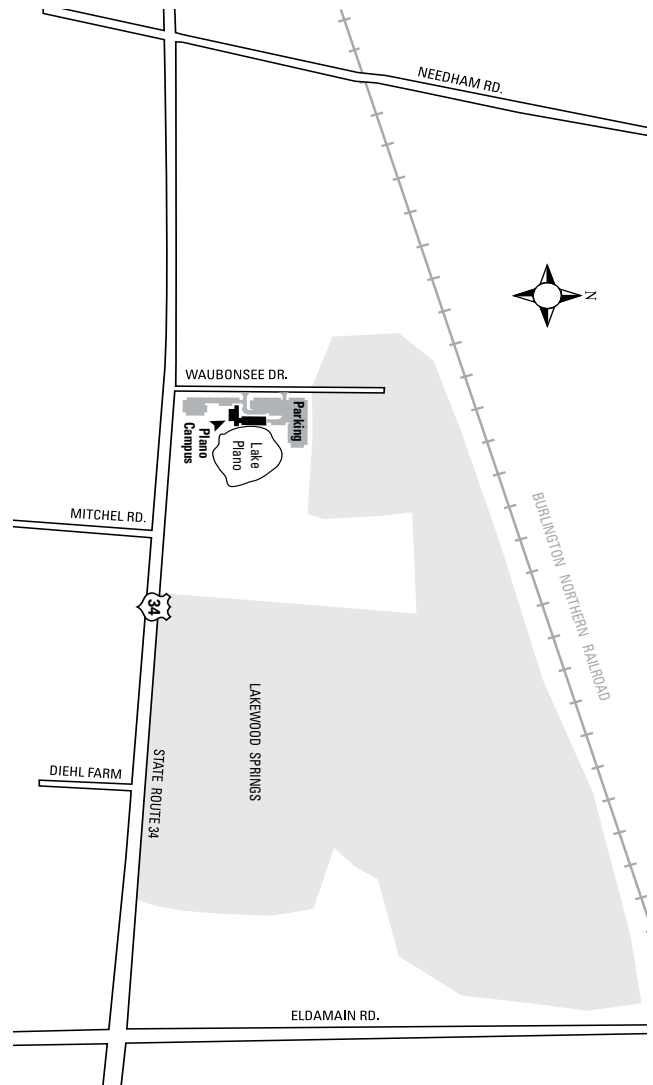
Drop-offs are easily made on the Fox River side of the Aurora Downtown Campus by using the Waubonsee driveway.

A Pace Bus Stop is available on Galena Blvd.

# Aurora Fox Valley Campus Map



# Plano Campus Map





# NEW STUDENT CHECKLIST

It's important to start your Waubonsee career on the right foot. Use this checklist to make sure you are all set to begin this semester.

## Financial Aid & Payments

Ensure you have your payment in place to avoid being dropped from classes! If you are eligible for financial aid, finalize any missing documents if applicable. Lastly, we encourage you to file the FAFSA or Alternative Application if you have not done so already. Questions? **Contact Financial Aid at (630) 466-5774.**

## Purchase Your Textbooks

Have your textbook and other course materials ready BEFORE classes begin! Does your class require an access code? Is it a MyMaterials (Inclusive Access or Open Educational Resources) course? Talk to the bookstore and don't toss your access code on accident. Nothing is worse than being under prepared for the first day of class. Visit [bookstore.waubonsee.edu](http://bookstore.waubonsee.edu) for more information.

## Know Your Resources

From creating a class schedule, paying for classes, getting a laptop, or having someone to talk to, Waubonsee has resources available for all of our students.

mywcc is your connection to use online chat, **check for holds on your account**, and view forms and other helpful tools.

Check out our services directory for information on how to connect with different departments. [waubonsee.edu/services-directory](http://waubonsee.edu/services-directory)

## Explore Canvas

Regardless of your course modality (face-to-face, online, hybrid, flex), it will be important to become familiar with Canvas. Your usage will vary by modality, but to be successful you must know how to use it. Completing your Waubonsee Canvas Student orientation is the first step. Afterwards you may choose to attend a virtual workshop provided throughout the semester.

## Get Connected

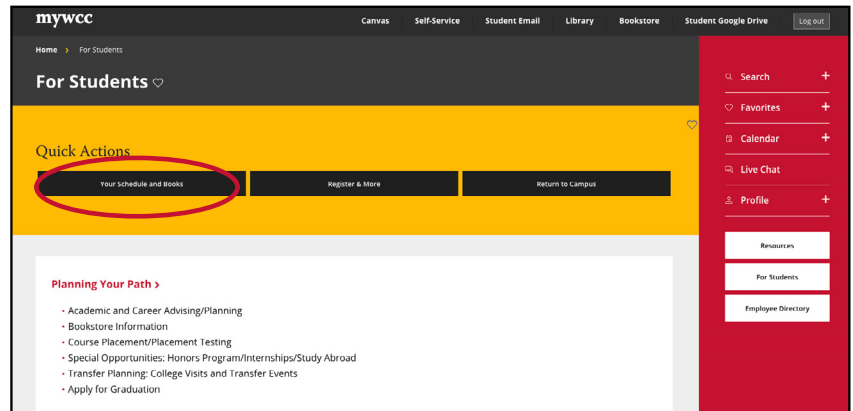
If you are eligible for any of these services, make sure to connect with them as soon as you can! Visit [waubonsee.edu/student-experience](http://waubonsee.edu/student-experience) for more information.

- ~ Access Center for Disability Resources
- ~ TRIO/Student Support Services
- ~ Veteran and Military Services

# Finding Your Class Schedule

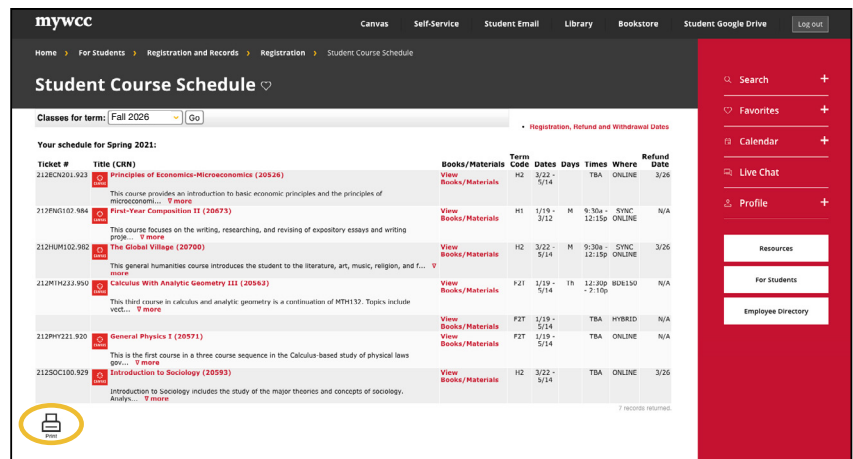
## 1. "Quick Actions" on the "For Students" page.

- Once you've registered, login to [mywcc.waubonsee.edu](http://mywcc.waubonsee.edu) and click the **"For Students" box** on the right-hand side of the log-in page. In the yellow **"Quick Actions"** across the top, click on **"Your Schedule and Books"** to open your class schedule.



## 2. Student Schedule






- From the **"Student Schedule" page**, you may click **"View Your Schedule"** for a printer-friendly copy of your schedule.



*\*Note: if you have a hybrid class, it may be listed twice on your schedule. One will show the day/time you meet in person for class, and the second is the online portion.*

## What Are the Ways I Can Take Classes?

You can read more at [www.waubonsee.edu/mychoice](http://www.waubonsee.edu/mychoice)

	<b>FACE-TO-FACE</b> Schedule Code: By Campus Location 	<b>ONLINE</b> Schedule Code: ONLINE 	<b>HYBRID</b> Schedule Code: Hybrid 	<b>SYNC ONLINE</b> Schedule Code: SYNC ONLINE 	<b>FLEX</b> Schedule Code: FLEX 
On-campus attendance required	X		X		Student's choice
Participation required at a specific time (synchronous)	X		X <i>(For the face-to-face sessions)</i>	X	Student's choice
Heavy use of technology (equipment, Internet, Canvas, Zoom)		X	X	X	X
Ability to work well independently without set meeting schedule (asynchronous)		X	X		Student's choice
Assignments due on specific dates	X	X	X	X	X

# USE THE FITNESS CENTER FOR FREE!



## All current students have **FREE** access to Waubonsee's Fitness Center.

Appropriate for all fitness levels, it has a wide range of cardiovascular and strength training equipment, free weights, a walking track, locker rooms, and showers.

Waubonsee's Fitness Center is located on the first floor of Erickson Hall on the Sugar Grove Campus.

Please note, all students require an X-number for entry.

Visit [waubonsee.edu/Fitness](http://waubonsee.edu/Fitness) for details.

## Get Your XCARD

### What is an XCARD?

An **XCARD** is a card with your photo, name and x-number printed on it.

### *It makes using student services easier!*

Carry one for quick access to your nine-character X-number used for library checkouts, bookstore purchases, Wi-Fi, and mywcc, as well as other student services.

### *Do they cost anything? What should I bring with me?*

Nope. Your first card is **FREE!** If you lose it, and need a replacement, a \$10 charge will apply. Just bring a government-issued I.D. -- *your driver's license will work!*

### *Where can I get one?*

- The **BOOKSTORE** at Sugar Grove and the Aurora Downtown Campuses (except during the week before classes start and the first two weeks of the fall and spring semesters).
- The **LIBRARY** at the Sugar Grove and Aurora Downtown Campuses one week before classes start and the first two weeks of each semester.
- The **LIBRARY** at the Aurora Fox Valley Campus during regular library hours year-round. **(TIP: You can get your Nursing I.D. or EMT Badge at this location too!)**





# WHAT IS DEI?

## Diversity

means having different kinds of people including different races, ages, abilities, beliefs etc.

## Equity

means everyone gets what **they** need to be successful; and not everyone needs the same supports.

## Inclusion

means everyone is welcomed and included no matter how different they are.

Learn more about Cultural Events at [waubonsee.edu/DEI](http://waubonsee.edu/DEI)

June **Pride Month and Juneteenth**

February **Black History Month**

Sept./Oct. **Latinx Heritage Month/  
Hispanic Serving Institution Week**

March **Women's History Month**

October **LGBTQ+ History Month**

May **Asian American Pacific Islander Heritage  
Month/Asian Pacific Islander Desi American  
Heritage Month**

November **Native American Heritage Month**

# Campus Bookstores

MAKE US YOUR FIRST STOP FOR TEXTBOOKS, REQUIRED CLASS SUPPLIES, CLOTHING AND GENERAL MERCHANDISE.



Order your textbooks online at:  
**bookstore.waubonsee.edu**

Instantly compare Waubonsee's prices with Amazon, alibris, AbeBooks and others.

Pickup or delivery to your home or any campus available.

For textbook information, contact:

(630) 466-2744                      Sugar Grove  
(630) 906-4163                      Aurora Downtown

Bookstore Customer Service:

(630) 466-2908

- Textbooks and Access Codes
- Waubonsee and Chiefs gear, laptops, headphones, backpacks, professional wear, school supplies, snacks and more!
- Uniforms for Auto Tech, Auto Body, and Nursing Programs
- Art Supply, Engineering, ESL, and Nursing Kits

*Matco & Neu tools available by special order.*

## Bookstore Locations and Hours:

### SUGAR GROVE CAMPUS, First Floor Dickson Center

Mon.-Wed.                      8 a.m. - 6:30 p.m.  
Thurs./Fri.                      8 a.m. - 4:30 p.m.

### AURORA DOWNTOWN CAMPUS, 18 South River Street (Use Galena Blvd. entrance.)

Mon.-Wed.                      7:30 a.m. - 6:30 p.m.  
Thurs./Fri.                      7:30 a.m. - 4:30 p.m.

# Student Services:

## Academic and Career Advising (630) 466-2361

**STC 262; DWNTN 110; FOXVLY 231; PLANO 127**

While at Waubonsee, you'll have an assigned Academic and Career Advisor starting your first semester. You and your advisor will work one-on-one throughout your time at Waubonsee to help you reach your academic and career goals. Schedule a time to meet—we're here to support you!

## Counseling Services (630) 466-2361

**STC 262; DWNTN 110**

Counselors assist students with issues such as career and educational goals, transfer planning, programs of study, lifestyle transitions related to education, and other personal issues that may interfere with academic progress. Counselors can also assist students in distress and offer community referrals for issues such as domestic and sexual violence, addiction, depression, and other personal issues.

## Access Center for Disability Resources

**AccessCenter@waubonsee.edu**

**(630) 466-2564 or Videophone (630) 405-6110**

**STC 201**

The Access Center for Disability Resources is a resource for faculty, staff, and students. The Access Center is committed to collaborating with the campus community to increase accessibility and reduce barriers for persons with disabilities and to ensure effective delivery of student accommodations. To receive accommodations, students must declare their disability to the Access Center and complete the accommodations request process.

## S.T.A.R. (Student-Athletes Taking Academic Responsibility) Program

**(630) 466-2525**

The S.T.A.R. Program guides student-athletes through a successful transition to their career goals. Each student is provided with one-on-one personal, career, and academic counseling and advising. Academic monitoring is done on an ongoing basis. A weekly study hall is required for all student athletes.

## Veterans' Services

Waubonsee is proud to support students who have served or are serving their country. Military-connected students can receive assistance in applying for Financial Aid, State or Federal Benefits, and registering for courses. Community resources can also be provided to those who qualify. Assistance with educational planning, transfer planning, academic progress, financial aid questions, and benefits questions or issues are provided. Veteran Services also provides programming to military-connected students.

For assistance with academic and career advising, benefit/referral information, and the evaluation of military training for college credit, please contact:

**Transfer/Veterans Advisor at (630) 466-2366**

For assistance with financial aid and veterans' benefits, contact:  
**Financial Aid Veterans' Coordinator at (630) 466-6847**

## Undocumented Student Resources

Every part of you is welcome here. We provide dedicated resources for undocumented students and those who come from mixed-status families. As a student at Waubonsee, you receive the same comprehensive care, support, and high-quality education as every other student, regardless of your documentation or immigration status.

**waubonsee.edu/undocumented**



# Get Involved with Student Life

*There's more to college than classes!*

There's a saying that you get out of life what you put into it. The same is true of college.

You're already committed to studying hard and interacting with your professors to excel in your academic pursuits. You can thrive outside the classroom too, and make the most of your time at Waubonsee. The Student Life team is here to help you discover organizations and affiliations that can connect you with your fellow students and inspire you to go farther.

## Finding Out About Activities

Most events and opportunities are posted on the college-wide calendar accessible online at [calendar.waubonsee.edu](http://calendar.waubonsee.edu). Also, watch campus bulletin boards, Student Life easels, or the campus TV screens for information. Call the advisor of student organizations that may interest you, or attend the Engagement Fair, held at the beginning of each semester. Visit the Student Life Office on the Sugar Grove Campus in the Student Center, Room 126 for more information or see the calendar of Student Life events on the college-wide calendar.

## Student Organizations

View the current list of Student Organizations:



Student organizations are a terrific way to enhance your college experience. You can lean into your chosen career field, explore areas of personal interest, or try something new just for fun.

And you'll start to develop your leadership skills right away, because you can get involved from day one.

## NEED MORE INFO ABOUT HOW TO GET INVOLVED?

Contact Student Life  
at (630) 466-2369 or  
[studentlife@waubonsee.edu](mailto:studentlife@waubonsee.edu)

Join our  
Canvas course:



# Apply online for Waubonsee Foundation Scholarships!



## Application opens November 1!



**350+**

**AWARDS**

**\$350,000+**

**TOTAL FUNDS AVAILABLE**

**The application will be available at:**  
**[waubonsee.edu/foundationsscholarships](http://waubonsee.edu/foundationsscholarships)**

**QUESTIONS?** Contact  
the Waubonsee Foundation  
at (630) 466-2316 or  
[foundation@waubonsee.edu](mailto:foundation@waubonsee.edu)



**WAUBONSEE**  
COMMUNITY COLLEGE

*Foundation*

# WHAT'S ON YOUR MIND?

I am feeling overwhelmed.

I could use some financial support.

I need help finding a place to stay.

I just need someone to talk to.

## CONNECT WITH **WAUBONSEE** FOR SUPPORT

Scan the appropriate QR code for more information on how Waubonsee can connect you to the resources you need.

Housing Support



Emergency Assistance



Mental Health Support



Request Additional Assistance





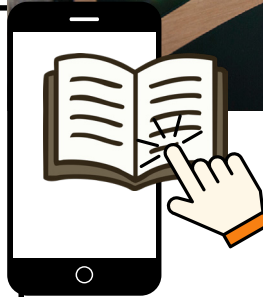
## Contact us!

The Library is **OPEN 7 days a week!**\* We are also available via chat, email or phone for help.

Visit [library.waubonsee.edu](http://library.waubonsee.edu) for our most current hours and how to get in touch.

\*summer and interim hours may vary

Find books, databases, ebooks, and ways to get help! Start at the Library website!



## Services

- **Librarian assistance** - Get citation and research help, including 1-on-1 reference appointments, in person or via Zoom!
- **Study spaces** - Use a private study room or a table in the quiet study zone.
- **Libby!** - Libby is a FREE app where you can borrow a range of resources, including popular fiction and nonfiction, audiobooks, magazines, and graphic novels.
- **Student technology support** - Get access to computers, printers, scanners, and assistive technologies. Our friendly staff is available to help!
- Find tech resources, learn about upcoming tech training opportunities, or **schedule a 1-on-1 tech help appointment** at [waubonsee.edu/TechHelp](http://waubonsee.edu/TechHelp)



Check out laptops and wifi hotspots. Request help for Canvas, Office 365 or other technology in your courses. Your starting point for all things technology help.

[Servicedesk.waubonsee.edu](http://Servicedesk.waubonsee.edu)



# FIND SUCCESS



WAUBONSEE  
COMMUNITY COLLEGE

Library Services

Virtual events are auto captioned. If you need professional captioning, a sign language interpreter or other accommodations for an event, please contact [library@waubonsee.edu](mailto:library@waubonsee.edu). Five business days' notice is requested. Waubonsee does not discriminate on the basis of any individual's actual or perceived characteristic protected by law in its programs or activities. Inquiries regarding this policy may be directed to: Diana Torres, ADA/Section 504 Coordinator, or Jami Hinshaw, Title IX Coordinator, Route 47 at Waubonsee Drive, Sugar Grove, IL 60554, [compliance@waubonsee.edu](mailto:compliance@waubonsee.edu).

## Latinx Resource Center

# BIENVENIDOS

Somos Más que un Espacio, Somos Cultural, ¡Identidad y Representación!



## WHAT IS THE LATINX RESOURCE CENTER?

The Latinx Resource Center (LRC) is a vibrant space where students and the community feel welcomed and respected. We empower students and promote personal growth through professional development and cultural awareness. Our energetic programming fosters a strong sense of community and belonging.

### Our Mission:

The LRC cultivates la familia (family), providing a “home away from home” where we provide comprehensive support and resources to Latinx and other underserved students to meet social, emotional and academic needs and increase inclusive college retention and completion.

### Why We Use the Term *Latinx*:

Latinx is a gender-neutral alternative to Latino and Latina, promoting inclusivity and equity in higher education. It represents our commitment to recognizing diverse identities within our community, including LGBTQIA+ individuals.

### Our Key Focus Areas:

#### **Comunidad (*Community*)**

We share languages, customs, and values, uniting to support each other and ensure every student feels valued.

#### **Conexiones (*Relationship Building*)**

Building trust and familial bonds through shared opportunities and celebrations.

#### **Identidad (*Identity*)**

Celebrating origins, talents, and virtues, making students proud of their achievements and goals.

#### **Liderazgo (*Leadership*)**

Empowering students to believe in themselves, take chances, and lead initiatives for personal and professional growth.

### Support and Resources Offered:

- **Academic Guidance:** Providing resources and support to help students succeed academically, FAFSA applications, study groups, and workshops on effective study strategies.
- **Mentoring:** Offering one-on-one mentoring to support students’ personal and professional growth, helping them navigate challenges and achieve their goals.
- **Wellness:** Promoting mental and physical well-being through workshops, resources, and events that encourage healthy lifestyles and emotional resilience.

To learn more about our programs or to get involved, email: [LRC@waubonsee.edu](mailto:LRC@waubonsee.edu)

Join our  
canvas course:



[waubonsee.edu/LRC](http://waubonsee.edu/LRC)

If you're feeling **OVERWHELMED** or **STRESSED OUT**, we are here to help!

*Meet our Peer Support Leaders!*



## What is a Peer Support Leader?

**Peer Support Leaders are students - just like you!**

They're fellow students just like you who can relate to what you're going through. Whether you're dealing with academic pressure, personal issues, or just feeling burnt out, they're here to help you find practical ways to cope.

Our Peer Support Leaders are trained in stress management techniques and can also point you towards additional resources if needed. So if you're struggling or need someone to talk to, give us a call at **(630) 466-2361** or reach out to **[peersupport@waubonsee.edu](mailto:peersupport@waubonsee.edu)** to schedule an appointment. We're here to help you succeed!

Join our  
canvas course:



*We'd love to  
talk  
with you!*

**Sugar Grove  
Bodie Hall,  
Room 247.**

**Aurora Downtown  
Room 110.**

**Find our  
drop-in hours at  
[waubonsee.edu/  
peersupport](http://waubonsee.edu/peersupport)  
or make an  
appointment.**

# We're Hiring!

*If you are a current Waubonsee student looking for a part-time job, consider employment right here on campus!*

## Student Worker ~ Student Ambassador ~ Federal Work Study

**Compensation Rate:** \$15.25/hour

**Work Schedule:** Varies fall, spring, and summer, provided the student is registered within that term\*

**Work Hours:** Up to 25 hours per week

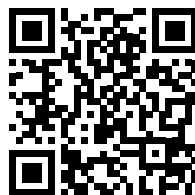
### A few of the areas looking for assistance:

- Academic Support/Peer Mentors/ Tutors
- Admissions/ Student Ambassadors
- Adult Education
- Art Lab Assistant
- Athletics/ Fitness Center
- Biology Lab Assistant
- Bookstore
- Business, Technology and Workforce Education - Welding
- Diversity, Equity, and Inclusion (DEI)
- Finance
- Financial Aid
- Financial Education – Money Matters
- Human Resources (HR)
- Information Technology (IT)
- Library
- Marketing and Communications
- Media Services (IT)
- Public Safety Cadets
- Student Life
- Student Services and Alumni Relations
- Student Success and Retention
- Counseling and Student Support



*\* Must be enrolled in at least one credit class at Waubonsee.*

**Get more information and apply here!**



**View employment opportunities: [waubonsee.edu/studentjobs](https://waubonsee.edu/studentjobs)**

*Waubonsee does not discriminate on the basis of any individual's actual or perceived race, color, creed, religion, gender, gender identity, sex, sexual orientation, age, national origin, ancestry, veteran's status, military status, unfavorable discharge from military service, marital status, order of protection status, pregnancy, disability, citizenship status or any other characteristic protected by law in its programs or activities. Inquiries regarding this policy may be directed to: Diana Torres, ADA/Section 504 Coordinator, or Jami Hinshaw, Title IX Coordinator, Route 47 at Waubonsee Drive, Sugar Grove, IL 60554, [compliance@waubonsee.edu](mailto:compliance@waubonsee.edu).*



**WAUBONSEE**  
COMMUNITY COLLEGE

Human Resources

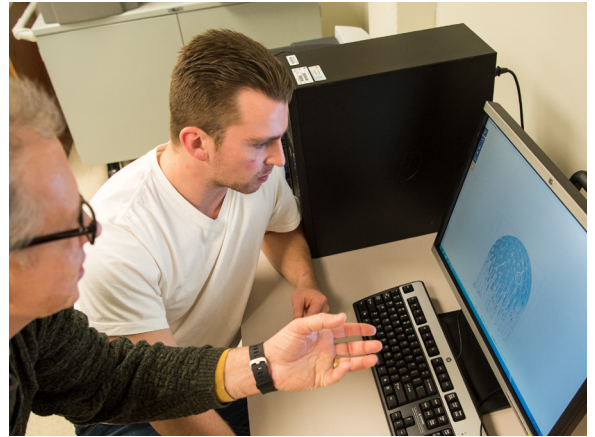
AIM HIGH, ACHIEVE MORE! CHALLENGE YOURSELF WITH THE

# HONORS PROGRAM

APPLY TODAY!



Special scholarship opportunities available!



Honors Program students work one-on-one with faculty in any course on projects that deepen understanding of the course content and further learning.



## Honors student benefits:

- ✓ Competitive advantage in college admissions and scholarship applications
- ✓ Opportunities to apply for full-tuition scholarships at North Central College and Elmhurst University
- ✓ Distinct transcript notation indicating honors courses taken
- ✓ Honors Program Graduate notation on your diploma and transcript if you complete 15 or more semester hours of honors courses with an overall GPA of 3.0 in honors courses

Students are required to apply for admission to the Honors Program and must meet specific criteria. Info regarding scholarships, criteria, deadlines, and how to apply can be found at

[waubonsee.edu/honors](http://waubonsee.edu/honors)

Questions? Email [honors@waubonsee.edu](mailto:honors@waubonsee.edu)

Develop independent, critical and creative thinking skills that will set you apart.



# KNOW YOUR IX

## Title IX Rights and Responsibilities at Waubonsee Community College

**1**  
Title IX is a federal civil rights law that prohibits sex discrimination in educational programs and activities. It applies to all students, employees, and visitors.

**2**  
Sex discrimination includes sexual harassment, sexual violence, and gender-based discrimination.

**3**  
Title IX applies to everyone, regardless of gender, gender expression or sexual orientation.

**4**  
Title IX requires equal access to recruitment, admission, financial aid, employment, housing, and activities.

**5**  
Schools must be proactive in eliminating sex discrimination on campus.

**6**  
Schools must have procedures for handling complaints of sex discrimination, sexual harassment, and sexual violence. At Waubonsee, you can make a report at [waubonsee.edu/title-ix](http://waubonsee.edu/title-ix).

**7**  
Schools shall not discriminate or exclude any student from its educational program or activity on the basis of pregnancy, childbirth, false pregnancy, termination or recovery therefrom.

**8**  
Schools may not retaliate against someone filing a complaint and must keep complainants safe from other retaliatory harassment.

**9**  
All public and private schools receiving federal funds, including Waubonsee Community College, must comply with Title IX.

For more information, visit [waubonsee.edu/title-ix](http://waubonsee.edu/title-ix)



WAUBONSEE  
COMMUNITY COLLEGE

