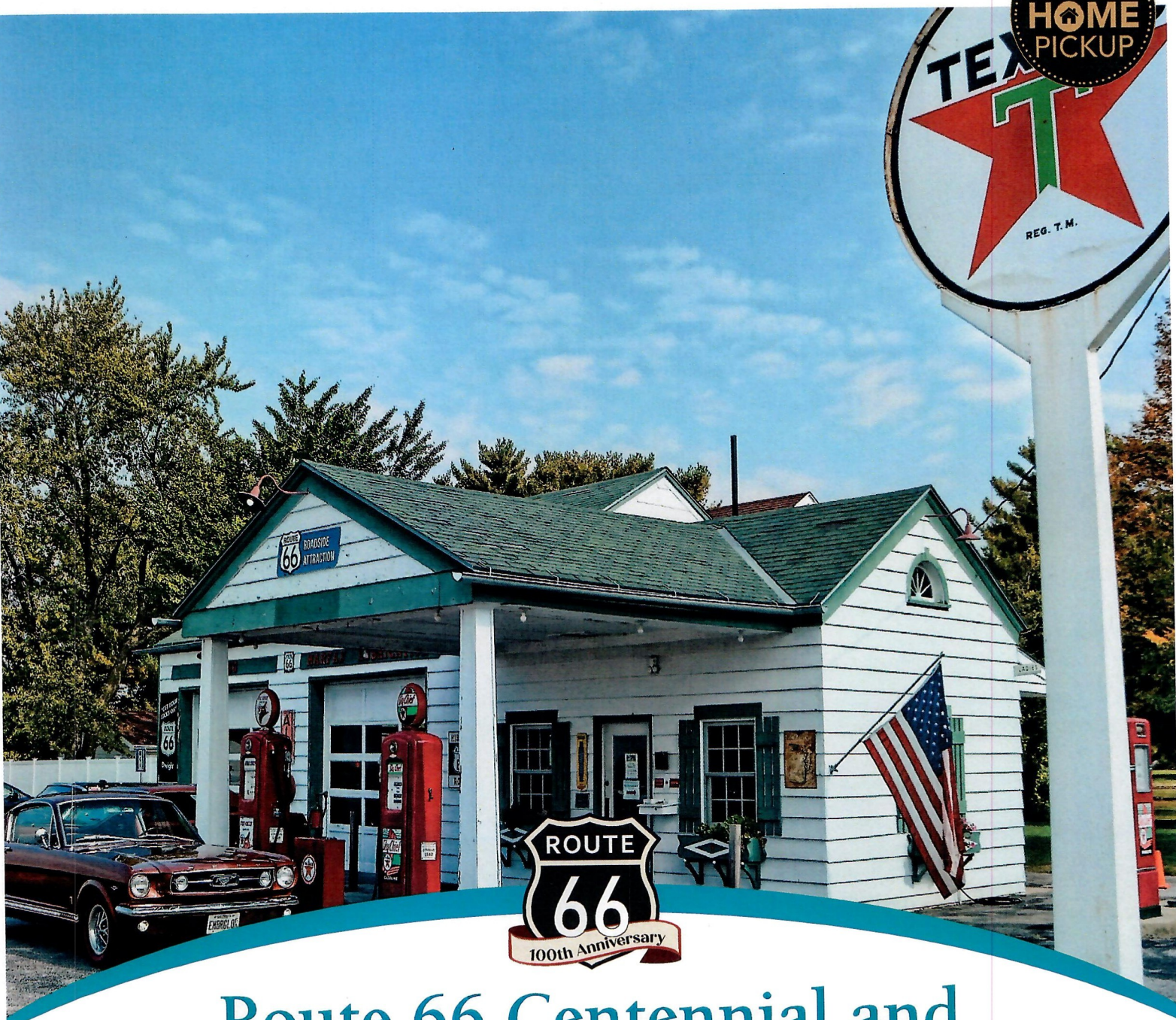


Lifelong Learning Institute at
Waubonsee Community College presents....

FREE
HOME
PICKUP



Route 66 Centennial and American Dreamers and Doers

Marking the 100th Anniversary of the “Mother Road”

Tour Dates: April 19th – April 26th, 2026


Mayflower
CRUISES & TOURS
ESTABLISHED 1964

Route 66 Centennial and American Dreamers and Doers



DAY 1 Route 66 in Illinois: Depart this morning to begin the journey along Historic Route 66. Make a photo stop at the Old Joliet Prison for a look at its beautiful limestone façade. In Wilmington, see the legendary Gemini Giant, in Dwight see the historic Ambler/Becker Texaco Station and in Atlanta, a 19-foot tall Paul Bunyon greets you. Outside St. Louis you will stop at the Old Chain of Rocks Bridge which spans the mighty Mississippi River. Imagine the sights and sounds of 1930s roadsters as they cross the bridge. Tonight, enjoy the Manager's Kickback Reception.

(Drury Manager's Kickback Reception)

DAY 2 Gateway Arch, Ted Drewes and Mississippi Cruise: Begin the day at the Gateway Arch National Park which features the Museum of Western Expansion which commemorates President Thomas Jefferson's vision of a continental nation. See the Gateway Arch, which stands at over 600 feet and then take to the water for a narrated cruise along the Mississippi River. After lunch you will make a stop at Ted Drewes Frozen Custard, a Route 66 favorite, for a tasty treat. Then visit the National Museum of Transportation and see why it is considered one of the largest collections of transportation vehicles in the world, including the Bobby Darin "Dream Car" and the rare Chrysler Turbine Car. Tonight, dinner is at Favazza's on the Hill.

(Breakfast and dinner)

DAY 3 Route 66 in Missouri: Begin this day on Route 66 with a drive through Lone Elk Park. This wildlife management area is home to bison, wild turkey, waterfowl, elk and deer so keep an eye open as you pass through. Near Stanton, a stop is made at Meramec Caverns, a complex cavern system formed from the erosion of large limestone deposits over millions of years. See the rare and colorful mineral formations as well as pre-Columbian Native American artifacts. Later, you will stop at the

Fanning 66 Outpost and see the over 42-foot tall Red Rocking Chair, once named the largest in the world. Tonight, dinner is at Lambert's, "Home of the Throed Rolls." **(Breakfast and dinner)**

DAY 4 Route 66 in Kansas: Just a short 13-mile stretch of historic Route 66 runs through Kansas. In Galena, make a photo stop at the Kan-O-Tex Service Station to see the rusty old tow truck that inspired the character "Tow Mater" for the animated movie series *Cars*. In Baxter Springs, stop into the Route 66 Visitors Center to see the exhibits and visit the gift shop. Two miles west of Riverton you will cross the famed "Rainbow Bridge," a single-span concrete Marsh arch bridge spanning Brush Creek. This is the sole surviving bridge of this type on the entire length of the former highway. Later, visit the Route 66 Car Museum for a unique journey through automotive history featuring 70 classic and celebrity cars.

(Breakfast, lunch and Drury Manager's Kickback Reception)

DAY 5 Arabia Steamboat Museum, Hallmark Visitors Center and Amelia Earhart Hanger: Drive north today to Kansas City and arrive at the Arabia Steamboat Museum. Explore the artifacts recovered from the Steamboat Arabia, which sank in 1856, and was found in 1988. Learn about the history of the Missouri River and the National Steamboat Museum project. Enjoy some authentic Kansas City BBQ during lunch at Arthur Bryant's. Then stop at the Hallmark Visitors Center and hear about the founding of Hallmark cards. At the Amelia Earhart Hanger Museum walk through the exhibits that illustrate her adventurous life. Tonight, take advantage of the Drury Inn's Manager's Kickback Reception. **(Breakfast, lunch and Drury Manager's Kickback Reception)**

DAY 6 J.C. Penney, Walt Disney and Mark Twain: Depart St. Joe this morning and arrive at the J.C. Penney



Museum in Hamilton, Missouri. Learn the story of the man named James Cash Penney who founded one of the largest departments store chains in the nation. In Marceline, visit the Walt Disney Hometown Museum. Located in the restored Santa Fe Railway Depot, the museum houses a collection of memorabilia from the Disney's family farm where they lived from 1905 to 1909. In Hannibal, visit the Mark Twain Boyhood Home, a National Historic Landmark, along with Becky Thatcher's House, Huckleberry Finn House and the newly restored Grant's Drugstore. **(Breakfast and lunch)**

DAY 7 Abraham Lincoln and Frank Lloyd Wright: Begin the day at the Abraham Lincoln Presidential Library and Museum which documents the life of the 16th U.S. president, and the course of the American Civil War. Combining traditional scholarship with 21st-century showmanship techniques, the museum ranks as one of the most visited presidential libraries. Then, visit the Lincoln Tomb. Later, tour the Frank Lloyd Wright-designed Dana-Thomas House. This Prairie School-style home was built in 1902-1904. In the evening visit the Illinois State Fairgrounds for the Legends Neon Park where re-creations or restorations of neon signs of past Route 66 businesses brightly glow. Tonight, a farewell dinner is hosted by your tour manager at Motorheads. **(Breakfast and dinner)**

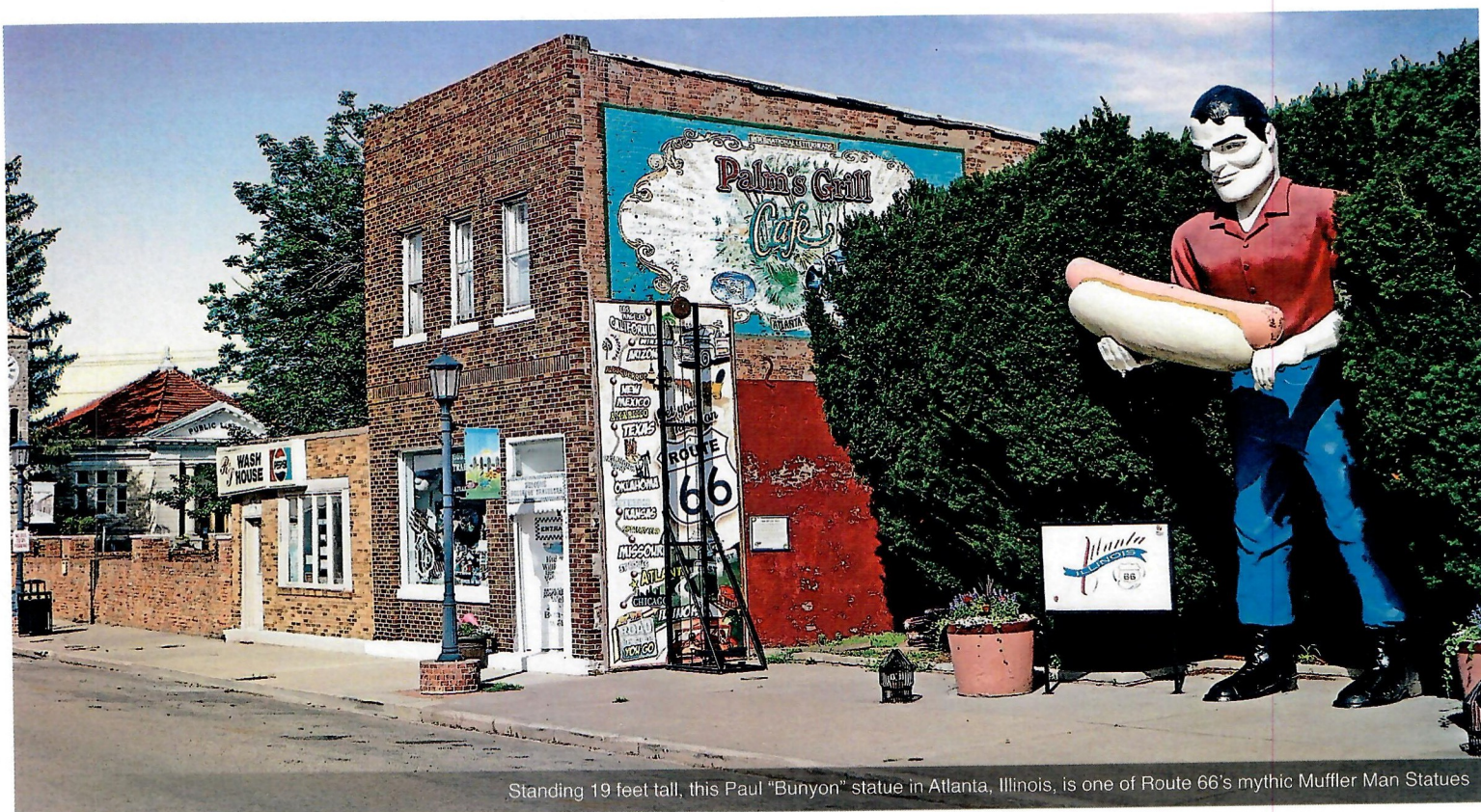
DAY 8 The Old Brick Road and Home: Make a photo stop at Shea's Gas Station before driving down the 1.4 mile-long stretch of restored hand-laid brick road segment of the original Route 66 now on the National Register of Historic Places attraction. Stop at the Route 66 Hall of Fame and Museum and Wally's before returning home. **(Breakfast)**



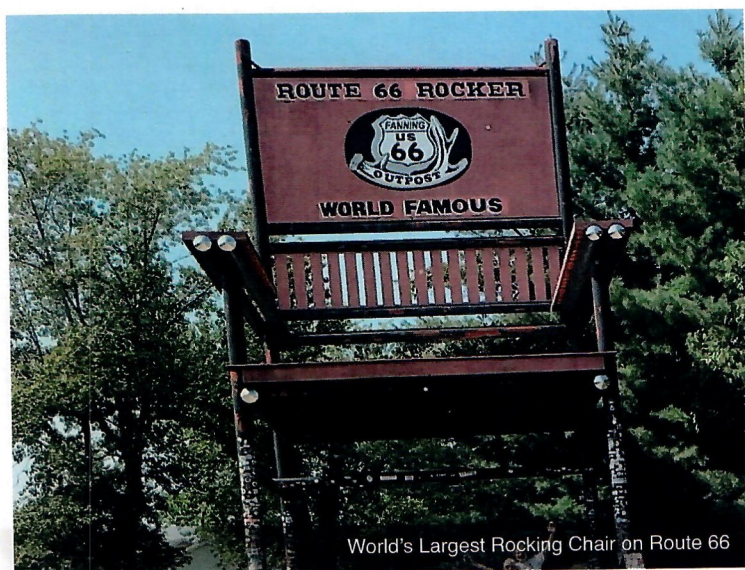
8 Days • 16 Meals

- ✓ 16 Meals: 7 breakfasts, 3 lunches and 6 dinners (including 3 Drury Kickback Manager's Reception)
- ✓ Free home or local pickup and return
- ✓ Illinois Route 66 stops including the Old Joliet Prison, Gemini Giant and Ambler/Becker Texaco Station
- ✓ Visit the Gateway Arch National Park including the Museum of Western Expansion, the Gateway Arch and narrated cruise along the Mississippi River
- ✓ Enjoy a tasty treat at Ted Drewes Frozen Custard and have dinner at Favazza's on the Hill
- ✓ Tour the National Museum of Transportation and see its amazing collection of vehicles
- ✓ Missouri Route 66 attractions include Lone Elk Park and Fanning 66 Outpost 42-foot tall Red Rocking Chair
- ✓ Visit Meramec Caverns filled with rare and colorful mineral formations
- ✓ Kansas Route 66 sites include Kan-O-Tex Service Station, Route 66 Visitors Center and Marsh arch "Rainbow Bridge"
- ✓ Tour the Route 66 Car Museum
- ✓ Visit the Arabia Steamboat Museum and the Hallmark Visitors Center
- ✓ Amelia Earhart Hangar Museum
- ✓ Visit the J.C. Penney Museum, Walt Disney's Hometown Museum and Mark Twain Boyhood Home
- ✓ Tour the Abraham Lincoln Presidential Library and Museum which documents the life of the nation's 16th U.S. president
- ✓ Visit the Illinois State Fairgrounds to see the re-creations or restorations of neon signs of past Route 66 businesses
- ✓ Tour the Frank Lloyd Wright Dana-Thomas House
- ✓ See Shea's Gas Station, drive the 1.4 mile-long stretch of Route 66 and visit Route 66 Hall of Fame

Route 66 Centennial and American Dreamers and Doers



Standing 19 feet tall, this Paul "Bunyon" statue in Atlanta, Illinois, is one of Route 66's mythic Muffler Man Statues



World's Largest Rocking Chair on Route 66

HOTEL ACCOMMODATIONS

Days 1 and 2 – Drury Plaza Hotel at the Arch, St. Louis, Missouri
Days 3 and 4 – Drury Inn and Suites, Springfield, Missouri
Day 5 – Drury Inn and Suites, St. Joseph, Missouri
Days 6 and 7 – DoubleTree Hotel, Springfield, Illinois

2026 Departure	Per Person Twin	Single Room
April 19	\$2,779	add \$999

Cancellation Fee Waiver (CFW) – \$299 per person (optional)

On a Mayflower Motorcoach tour, the cost of the tour is refundable less the deposit amount when cancellations are made more than 60 days prior to departure. While on tour, if a passenger must leave early due to a personal illness, illness or death of a member of the immediate family or a traveling companion, the purchase of the Cancellation Fee Waiver guarantees full refund for any unused services. Should you choose not to purchase our Cancellation Fee Waiver, the following per person cancellation charges will be assessed:

- | | |
|--|-----------------------|
| • 61 days or more | Deposit Amount |
| • 60 to 7 days prior | \$300 per person |
| • 6 to 1 day prior | \$400 per person |
| • Day of departure | 100% of the tour cost |
| • Early departure from tour | 100% of the tour cost |
| • No refund on unused portions of the tour | |

TOUR ACTIVITY LEVEL				
1	2	3	4	5
EASY			ENERGETIC	

Exclusions: Mayflower Cruises & Tours reserves the right to alter its Refund and Cancellation Policy when a substantial amount of cancellation or postponement of travel is attributable to: conditions resulting from an act of God, natural or man-made disaster, fire, government action, civil disorder, war, hostilities between nations, or unavailability of transportation through no fault of Mayflower Cruises & Tours.

Mayflower
CRUISES & TOURS

USTOA
United States Tour Operators Association
A TRAVELER PROTECTION PROGRAM

NTA
National Tour
Association

ABA
AMERICAN BUS ASSOCIATION

FOR RESERVATIONS OR INFORMATION CONTACT:

Kim Carew
Lifelong Learning Institute
at Waubonsee Community College
630-892-9030
Buttonskc@aol.com
Rt. 47 at Waubonsee Rd, Sugar Grove, IL. 60554



RESERVATION & TRAVELER INFORMATION FORM

Lifelong Learning Institute at Waubonsee

Tour: Route 66 Centennial and American Dreamers and Doers

Departure Date: April 19, 2026

Initial deposit of **\$499** per person with Cancellation Fee Waiver due upon reservation

\$200 without Cancellation Fee Waiver

Final Payment is due February 19, 2026

Please print name exactly as it appears on your government issued photo identification (passport or drivers license) that you will be using while traveling.

Traveler 1: _____

Date of Birth: _____

Traveler 2: _____

Date of Birth: _____

Street Address: _____

City: _____ State: _____ Zip: _____

Tel: _____ Cell: _____

Email: _____

Roommate's Name: _____

Accommodations:

☐ Single ☐ Twin ☐ Guaranteed Share

☐ One Bed ☐ Two Beds

Pickup:

☐ Home ☐ Local

Name preference on name badge:

Traveler 1: _____

Traveler 2: _____

Comments: _____

PAYMENT INFORMATION:

Make Checks Payable to:

Mayflower Cruises & Tours

Mail Deposit & Final Payment to:

Mayflower Cruises & Tours

650 Warrenville Rd, Suite 500

Lisle, IL 60532

CREDIT CARD INFORMATION:

****MC, VISA & DISC accepted****

Card # _____

Security Code: _____ Expiration Date: _____

Cardholders Name and Billing Address:

Purchasing the Cancellation Fee Waiver:

☐ Yes

☐ No

Deposit Amount: \$200 per person

Cancellation Fee Waiver \$299 per person (optional)

Total Amount Enclosed \$ _____

For Information Contact:

Kim Carew

Lifelong Learning Institute at Waubonsee

Community College,

630-892-9030

Buttonskc@aol.com