

# Waubonsee Community College

## New Tennis & Pickleball Court Complex

October 16, 2024



DEMONICA KEMPER ARCHITECTS



**WAUBONSEE**  
COMMUNITY COLLEGE



# WAUBONSEE COMMUNITY COLLEGE

## New Tennis & Pickleball Court Complex

Existing Conditions



DEMONICA KEMPER ARCHITECTS



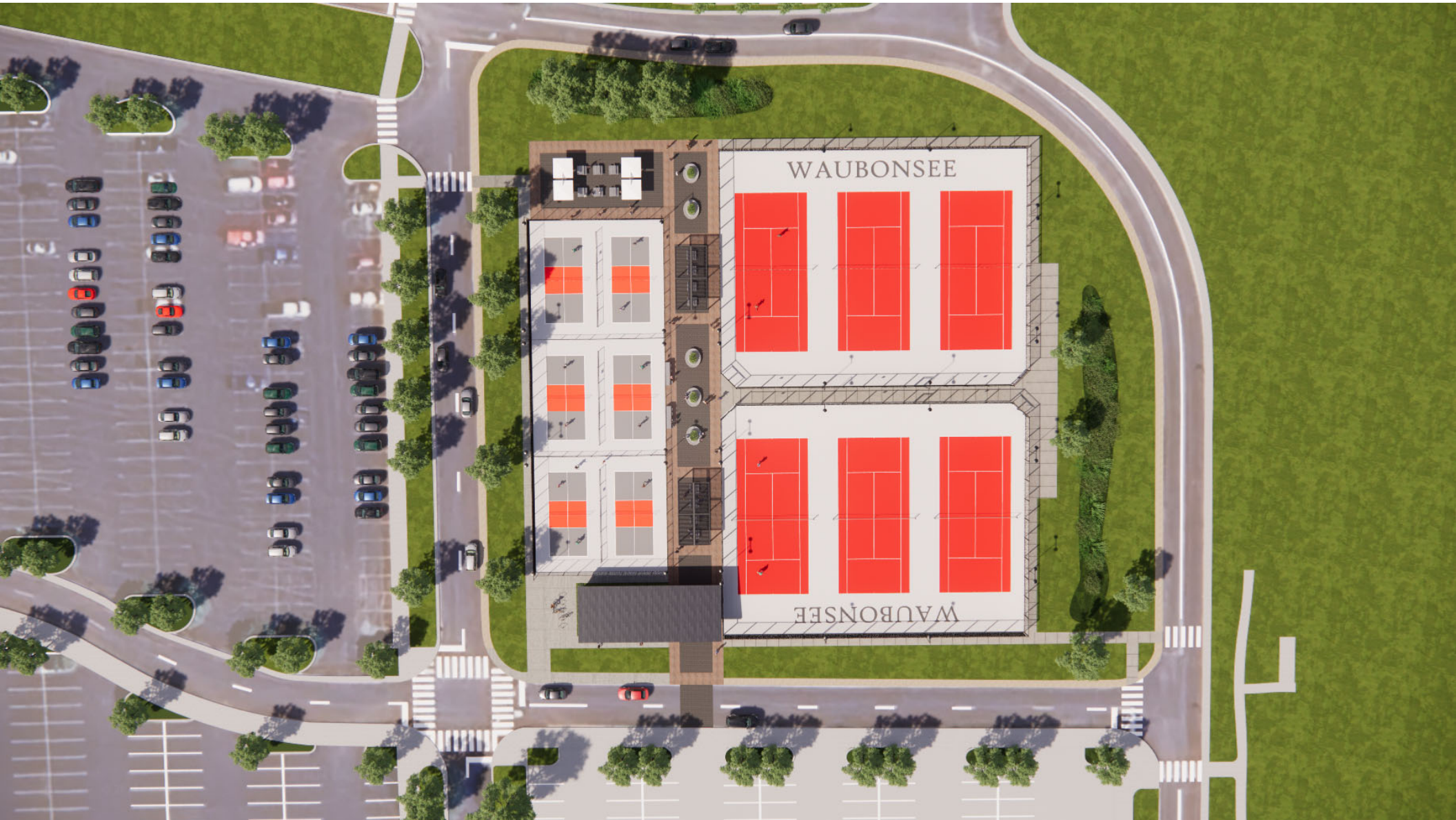
WAUBONSEE  
COMMUNITY COLLEGE



# WAUBONSEE COMMUNITY COLLEGE

## New Tennis & Pickleball Court Complex

Proposed Site Plan



DEMONICA KEMPER ARCHITECTS



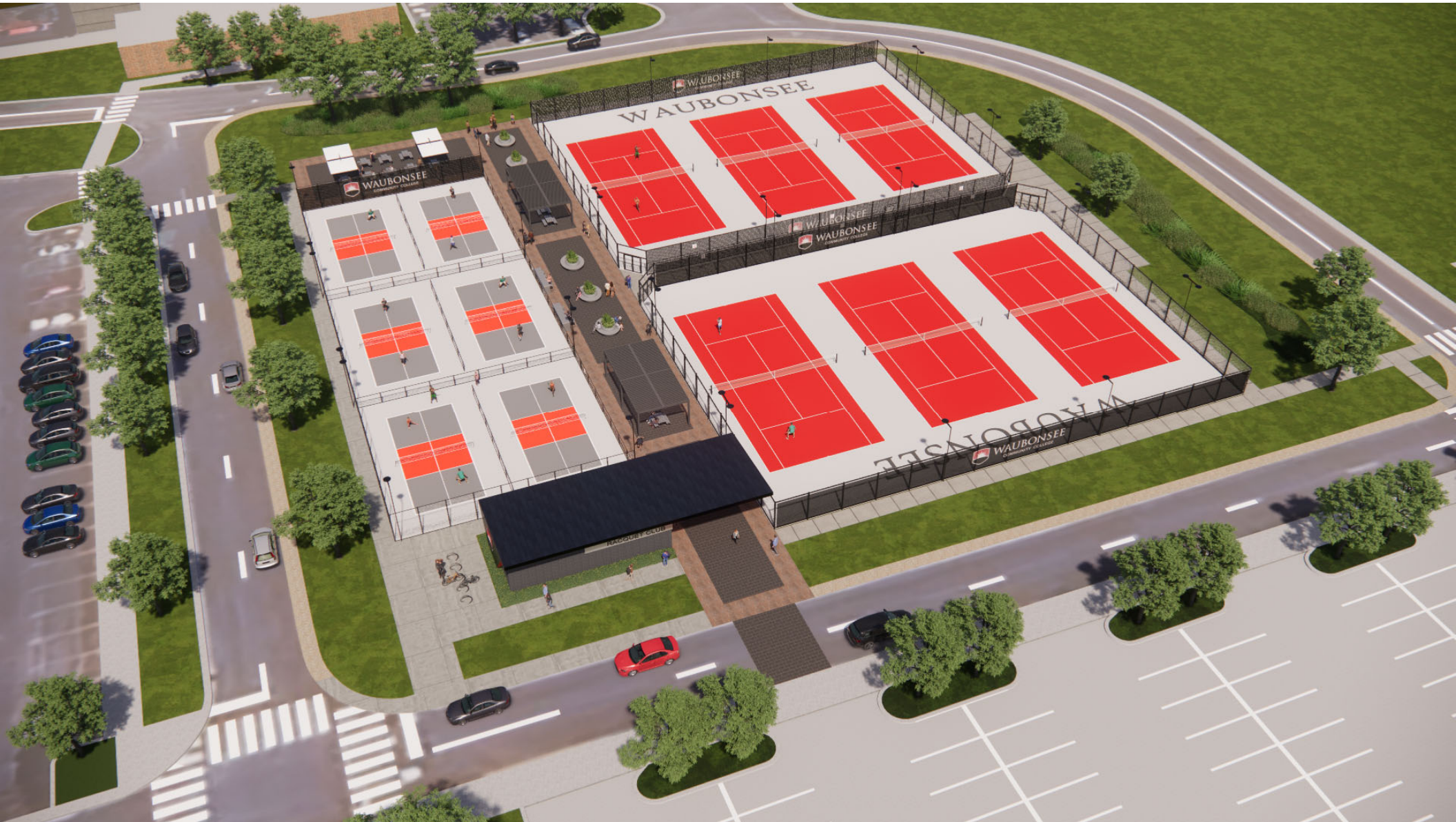
**WAUBONSEE**  
COMMUNITY COLLEGE



# WAUBONSEE COMMUNITY COLLEGE

## New Tennis & Pickleball Court Complex

Aerial View





# WAUBONSEE COMMUNITY COLLEGE

## New Tennis & Pickleball Court Complex

View of Concourse

















# WAUBONSEE COMMUNITY COLLEGE

## New Tennis & Pickleball Court Complex

View of Concourse





# WAUBONSEE COMMUNITY COLLEGE

## New Tennis & Pickleball Court Complex

View from Pickleball Courts



DEMONICA KEMPER ARCHITECTS



WAUBONSEE  
COMMUNITY COLLEGE



# WAUBONSEE COMMUNITY COLLEGE

## New Tennis & Pickleball Court Complex

View of North Terrace



DEMONICA KEMPER ARCHITECTS



WAUBONSEE  
COMMUNITY COLLEGE



# WAUBONSEE COMMUNITY COLLEGE

## New Tennis & Pickleball Court Complex

## Preliminary Cost Estimate

• Site Demolition	\$ 145,000
• Earthwork	\$ 176,700
• New Tennis Courts / Fencing	\$ 780,000
• (6) x \$130,000	
• New Pickleball Courts	\$ 420,000
• (6) x \$70,000	
• Concrete Walks	\$ 52,000
• 8,000 SF x \$6.50	
• Brick Pavers	\$ 166,500 (Alternate Bid – Plaza)
• 6,000 SF x \$18.50 (concourse)	
• 3,000 SF x \$18.50 (plaza)	
• Water Service	\$ 50,000
• Sanitary Sewer	\$ 12,600
• Electrical Service	\$ 35,000
• Site Lighting / Power	\$ 375,000
• Stormwater Allowance	\$ 148,000
• Landscaping	\$ 74,000 (Alternate Bid)
• Shade Structures / Furniture	\$ 229,000 (Alternate Bid)
• Shade Structures: 2 x \$90,000 ea	
• Planters: 5 x \$5,200 ea	
• Tables: 2 x \$8,600 ea	
• Stools: 8 x \$730 ea	
• New Building / Structure	\$ 700,000

Sub-Total	\$3,363,400
General Conditions / OHP @ 15%	\$ 504,500
Contingency @ 10%	\$ 386,800

**TOTAL ESTIMATED CONSTRUCTION COST** **\$4,254,700\*** \* does not include Fees & Reimbursables

**TOTAL ALTERNATE BID DEDUCTS:** **(\$453,502)**

**TOTAL (ALL DEDUCT ALTERNATE BIDS ACCEPTED):** **\$3,801,198**





# Waubonsee Community College

## New Tennis & Pickleball Court Complex

October 16, 2024



DEMONICA KEMPER ARCHITECTS



WAUBONSEE  
COMMUNITY COLLEGE