

A Word From Michele

Student Support Services Manager

Welcome to 2007!

Have you joined the thousands of people who resolve to improve their lives at this time of year? The tradition of the New Year's Resolutions goes all the way back to 153 B.C. Janus, a mythical king of early Rome, was placed at the head of the calendar.

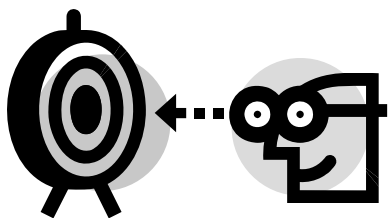
With two faces, Janus could look back on past events and forward to the future. Janus became the ancient symbol for resolutions and many Romans looked for forgiveness from their enemies and also exchanged gifts before the beginning of each year.

Source — © Copyright GoalsGuy Learning Systems Inc. All Rights Reserved

If your first semester wasn't so successful, may I suggest that you consider making a resolution to improve your study habits during 2007. Take the PDV 100 class, visit the Learning Enhancement Center for study strategy assistance, attend tutoring or see your SSS counselor for other suggestions.

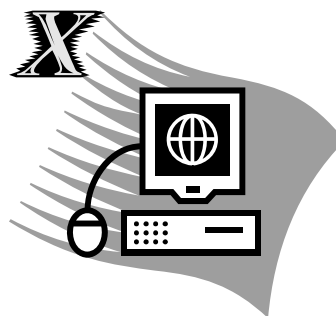
You may also find helpful ideas at <http://www.goalsguy.com/home.html>.

I hope that 2007 is a successful and meaningful year for each of you.



New Login

When you come back in January your "X" number will be your network login name. Your password will be reset to your birthday in the MMDDYY format.



Dates to Remember

- Jan. 15 Late registration — last day to enroll in a course is prior to the first class meeting.
- Jan. 22 First day of spring semester; tutoring begins.
- Jan. 26 Weekend classes begin.
- Feb. 2 End of all refunds for 16-week courses.
- Feb. 19 Last day to claim honor student status designation in a 16-week course.
- March 5 Summer semester registration begins.

From the Desk of Sandy Kolkay

Coordinator of Tutoring and Learning Enhancement Specialists

Starting a new semester requires planning in advance. It is great to see how many of our Student Support Services students have thought ahead and completed a tutor request for spring semester!

The spring tutor requests will be given to tutors in the months of December and January. Be aware that some requests will be grouped when needed in order to accommodate students in a particular discipline.

My advice to new and returning Student Support Services students is to continue to plan ahead before your classes begin. Purchase a planner and other materials you will need to organize your academic life at Waubonsee Community College.

Keep notes and handouts in a place where you can easily retrieve them. It is wise to have a notebook or folder specific to each subject you are taking. Occasionally, arrange your original lecture notes, handouts, text notes, and revised notes to strengthen your organizational skills.

It is never too late to increase your study skills and to take charge in the process of self-improvement.

Sandy's Statement for Success:

"The only way to excellence is to consistently improve yourself every single day."

Thomas J. Vilord

Transfer Workshop

On Tuesday, Dec. 19, six graduated/transferred SSS participants returned to campus to share their experiences during a workshop on transfer issues. We welcomed Katie Frank (Arizona State), Amy Lacefield (UIUC), Norma Maisonette (AU), Lucas Potts (NIU), Amanda Wollenberg (NIU) and Wayne Whitlock (UIUC), who shared their experiences and provided great tips when transferring. Here are some of the best tidbits:

- Get to know the campus (visit before choosing) and then get to know your campus before classes start.
- Introduce yourself to all of your professors. It's really important they know you.
- Get to know others in your department, program and/or cohort. Form connections.
- Join a club, volunteer group, band, something.
- Meet people who are different from you. Broadening your horizons is one of the most valuable lessons you'll learn. Students from all over the world will attend your college.

- Be responsible to follow up on what your advisors tell you. They don't always get it right and you don't want to find that out too late.
- Make copies of everything, get names and signatures for if/when you need proof.
- **GET YOUR ASSOCIATE DEGREE before you transfer!**

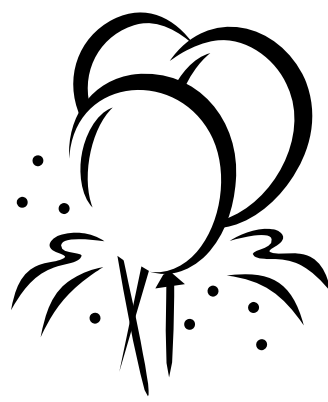
Pictured below from left to right are: Norma Maisonette, Wayne Whitlock, Amy Lacefield, Amanda Wollenberg, Katie Frank, Lucas Potts and standing is SSS Counselor Carolyn Kernan



Happy Birthday



<i>January</i>	<i>February</i>
Joanna Cisneros	Felicity Barr
Brianna Cline	Amanda Caho
Meagan Corsello	Christine Cotto
Matt Crowl	Chris Daily
Blanquita DeLoera	Tiffany Erday
Alexander Gurola	Brittany Harrison
Jessica Hernandez	Kiran Kaur
Constance Koeberl	Kristi Knack
Sharon Olson	Harry Le Rette
April Poker	Justine Martinez
David Ramirez	Jeremy Mumm
Jordon Richardson	Crystal Napier
Maria Salazar	Brett Rossell
	Zachary Stewart



Career Exploration

Heather Brodzik

Business, education and psychology, oh my! With so many choices out there, choosing a



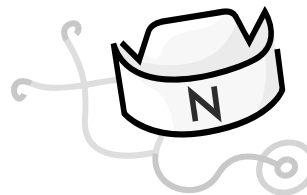
career path can be quite confusing. Never fear, Student Support Services has the resources to help you find your way:

- ✓ Lending Library: Come by and “check-out” the career books we have in our departmental library. You can check books out for short periods of time.
- ✓ Personality Assessment/Inventories: Make arrangements to do some testing that will give you career categories and college majors that match your interests and personality style.
- ✓ Online Resources: Look into these Web sites on your own:
 - www.Careercruising.com
 - <http://online.onecenter.org>
 - www.IIWorkInfo.com.

Watch for upcoming information about the SSS Career Workshop scheduled for April 2007.



Come join the fun and participate!



Off the Beaten Path

From the desk of Carolyn Kernan, SSS Counselor

Construction Management Technology

Often called constructors or project engineers, construction managers supervise the construction process from the beginning stages to final construction.

A construction manager is responsible for scheduling workers and equipment and following budgets and contracts. A person can typically become a construction manager after working as a carpenter, plumber, electrician, or in another related field.

Waubonsee Community College offers an Associate in Applied Science Degree in Construction Management Technology. Principles, practices, and the estimating process will be covered to prepare entry into the area of Construction Management. See your Student Support Services counselor if you are interested in this career.

*Only you can make your mind up!!
You're the one and only one!
Hunches in Bunches
Dr. Seuss*



Waubonsee Community College does not discriminate on the basis of race, color, religion, sex, age, national origin, veteran's status, marital status, disability or any other characteristic protected by law in its programs and activities. For more information on the college's nondiscrimination policies, contact the Director of Human Resources at: (630) 466-7900, ext. 2367; Waubonsee Community College, Route 47 at Waubonsee Drive, Sugar Grove, IL 60554-9454.

Student Support Services is a federally funded TRiO program sponsored by the U.S. Department of Education at \$243,366 for FY 2006.

Student Support Services

Collins Hall, Room 118

Route 47 at Waubonsee Drive

Sugar Grove, IL 60554-9454

ADDRESS SERVICE REQUESTED