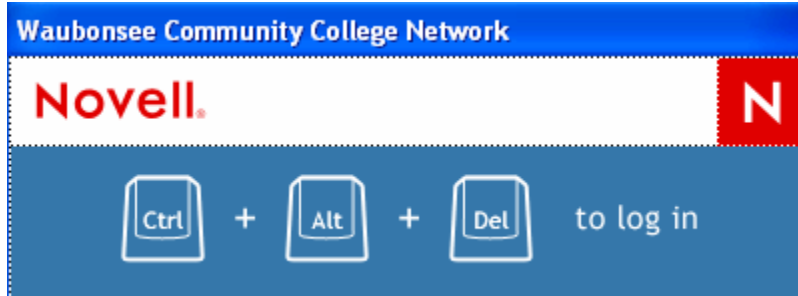


Student Network Login Quick Guide

Logging In

1. Turn on your computer and then press the **[Ctrl]+[Alt]+[Delete]** keyboard buttons at the same time to get the Network Login Screen.

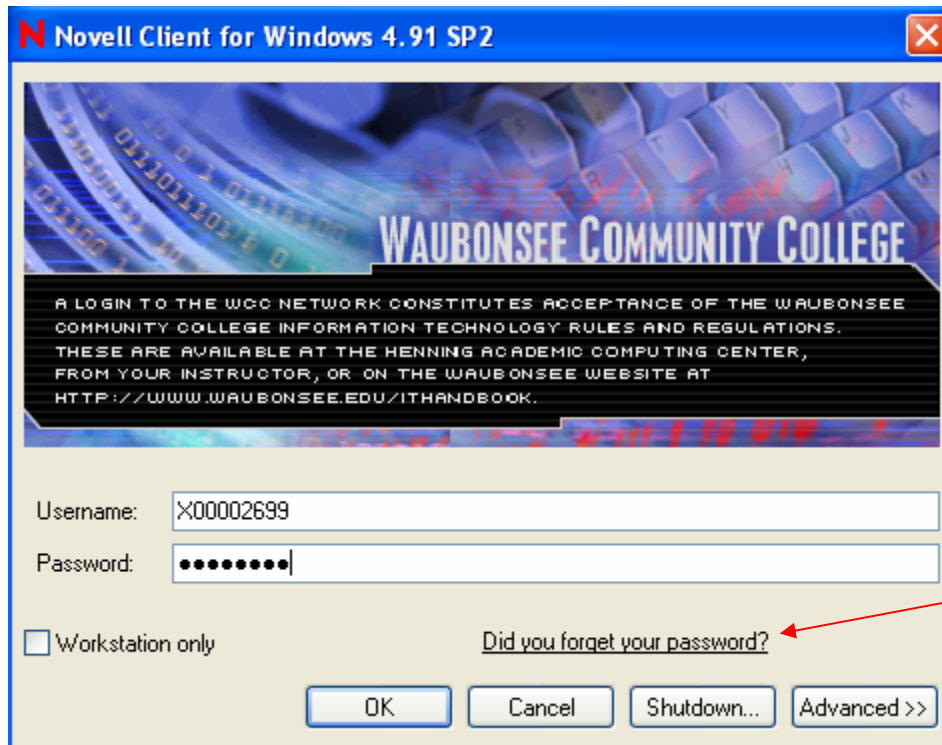


2. At the Network Login Screen, type the Username and Password.

Username: After January 2, 2007 the Username you will use to log into the network will be your **X Number**. (Your X Number should be entered with a capital X)

If you don't know your X number, you can contact Admissions and Records at (630) 466-7900, ext. 2370.

Password: Press **[Tab]** to move to the password field. The Password will be the last password you used with your old username. Once you log in, you will be asked to establish some security questions in case you forget your password in the future. (Your password will be good for 365 days)



Notice the new link in case you forget your password.

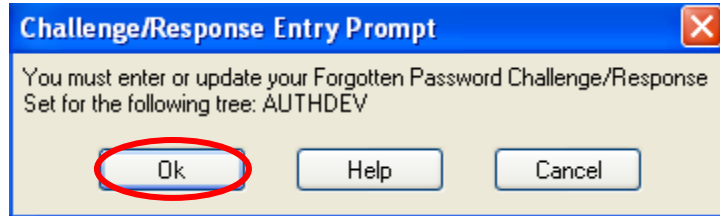
3. Click **OK** to complete the login to the network

Student Network Login Quick Guide

Password Challenge

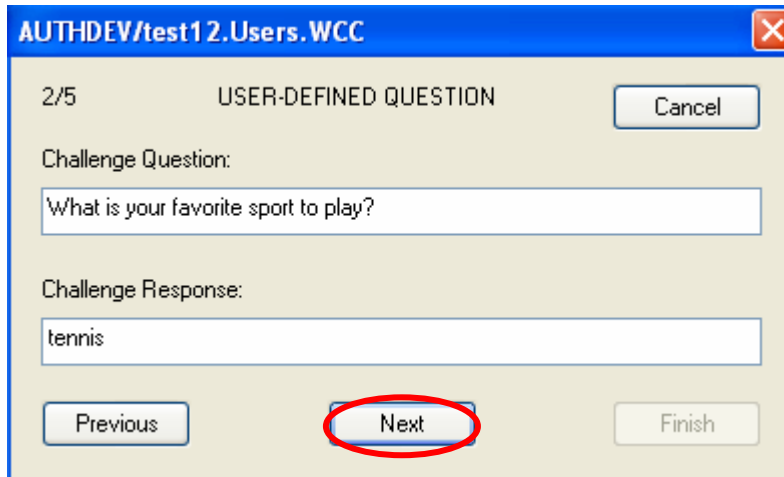
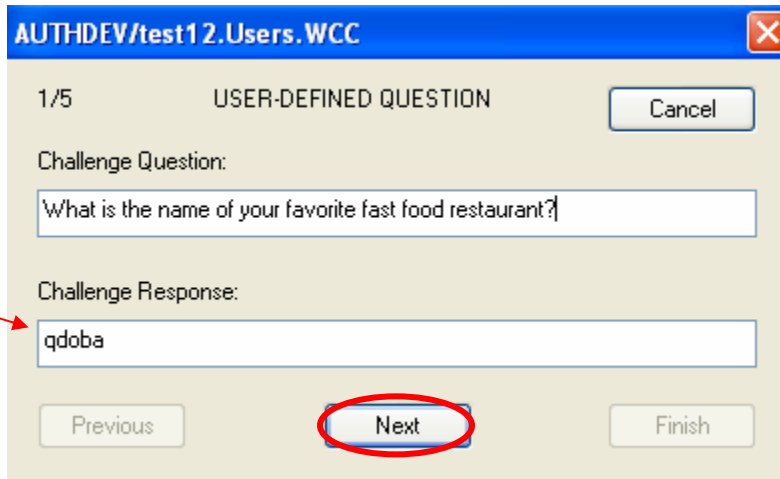
The first time you login, a new Challenge/Response Entry Prompt will appear. You need to establish five security questions and responses which will be used if you ever forget your network password.

1. Click **OK** on the Challenge/Response Entry Prompt to create and/or respond to your five security questions.



2. You will be prompted to create two user-defined questions and responses. Click **Next** to move to the next challenge screen.

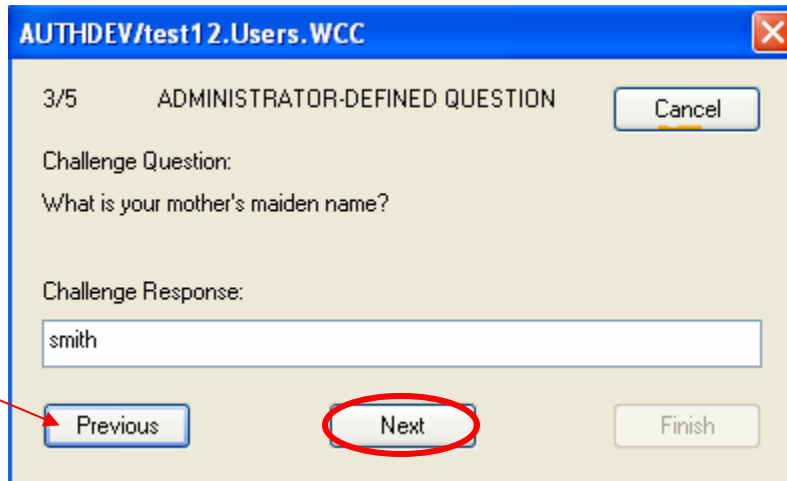
Note: Challenge Responses are case sensitive so be careful if you are using capital letters.



Student Network Login Quick Guide

- You will also be prompted to provide responses to three administrator-defined questions. Click **Next** to move to the next challenge screen.

Click to move to the previous screen.

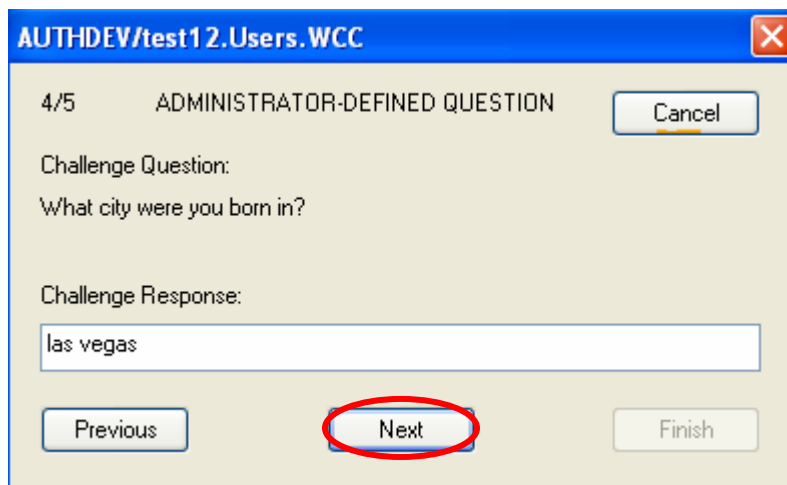


AUTHDEV/test12.Users.WCC

3/5 ADMINISTRATOR-DEFINED QUESTION

Challenge Question:
What is your mother's maiden name?

Challenge Response:



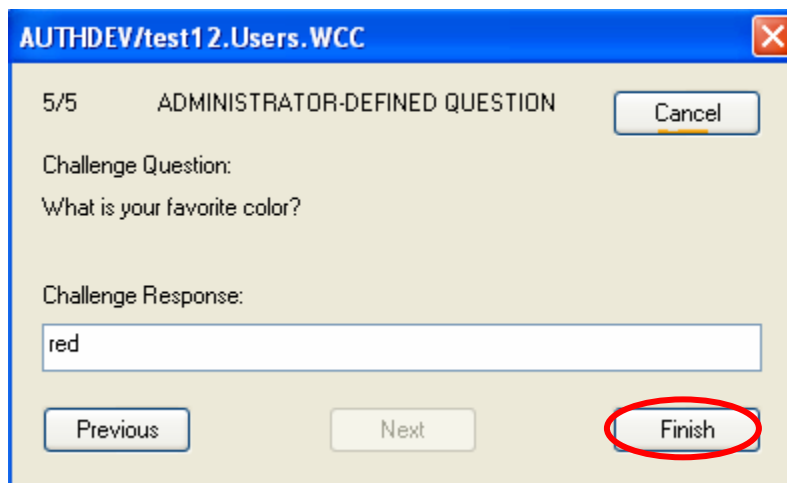
AUTHDEV/test12.Users.WCC

4/5 ADMINISTRATOR-DEFINED QUESTION

Challenge Question:
What city were you born in?

Challenge Response:

- Click **Finish** after entering the last challenge response.



AUTHDEV/test12.Users.WCC

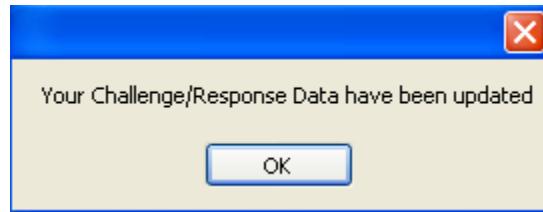
5/5 ADMINISTRATOR-DEFINED QUESTION

Challenge Question:
What is your favorite color?

Challenge Response:

Student Network Login Quick Guide

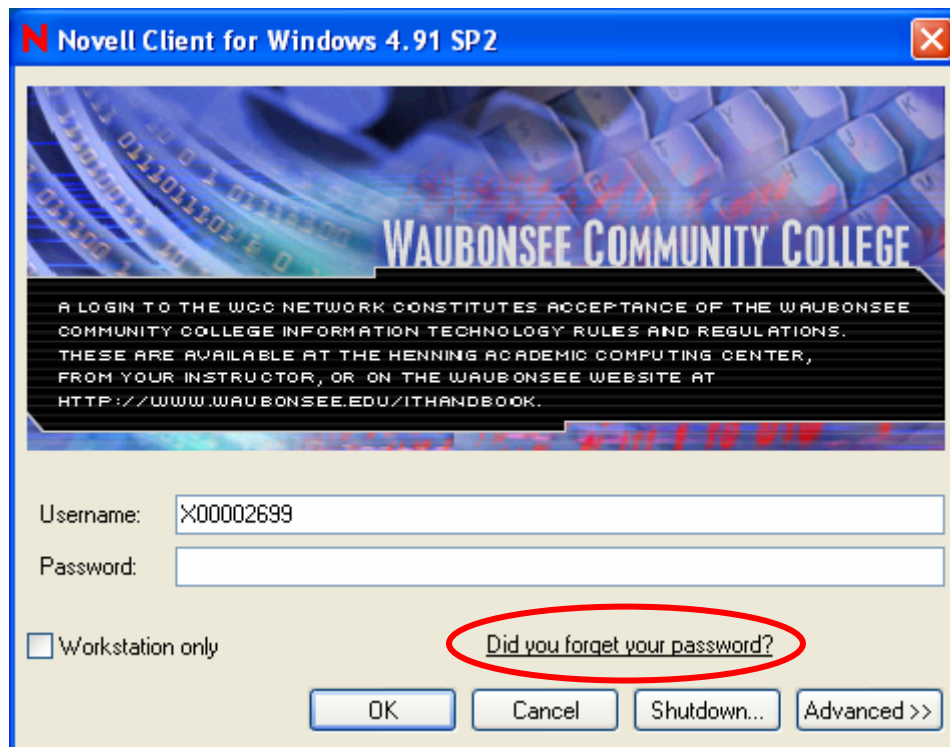
5. Click **OK** when you receive the window verifying that your responses have been updated.



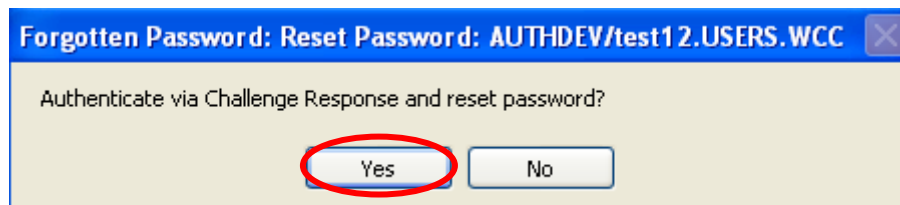
6. Congratulations, you are now logged into the network.

Forgot Your Password

1. If you ever forget your network password, enter your **Username** and click the **"Did you forget your password?"** link on the login screen.

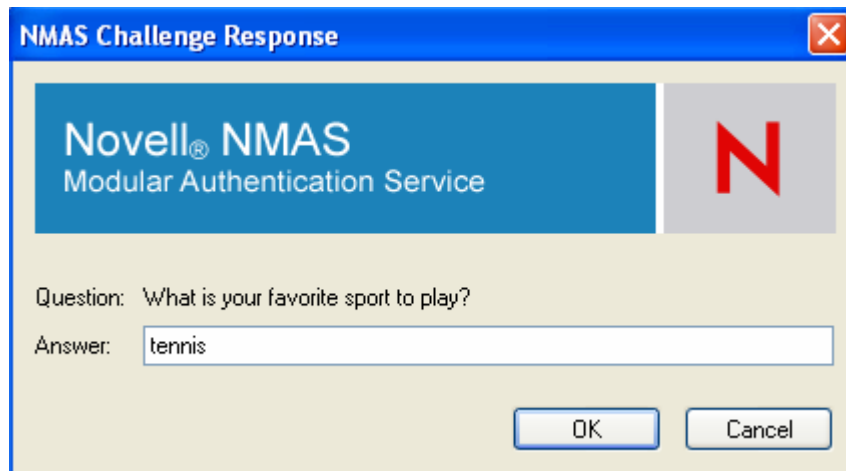


2. The Forgotten Password screen will appear asking if you want to have the system ask you three of the five challenge questions you established. If you provide all three responses correctly, you will then be prompted to enter a new password. Click **Yes** to provide your challenge response.



Student Network Login Quick Guide

3. **Type your response** to each challenge question and **click OK**. Remember these responses are case sensitive.



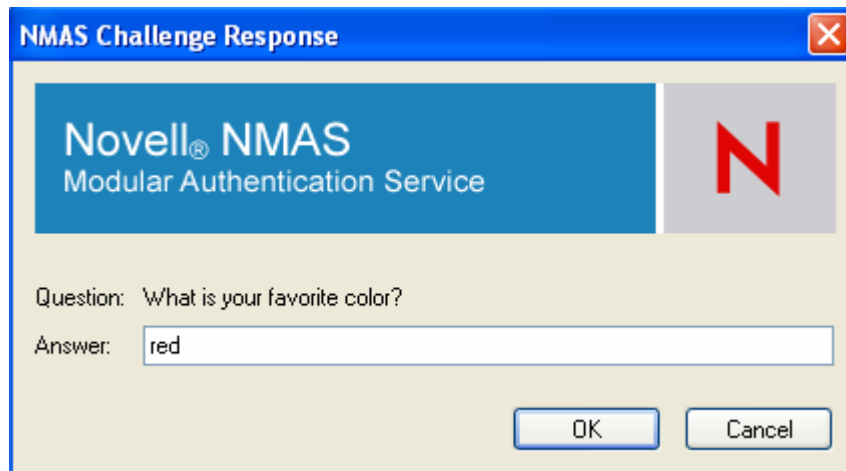
NMAS Challenge Response

Novell® NMAS
Modular Authentication Service

Question: What is your favorite sport to play?

Answer:

OK Cancel



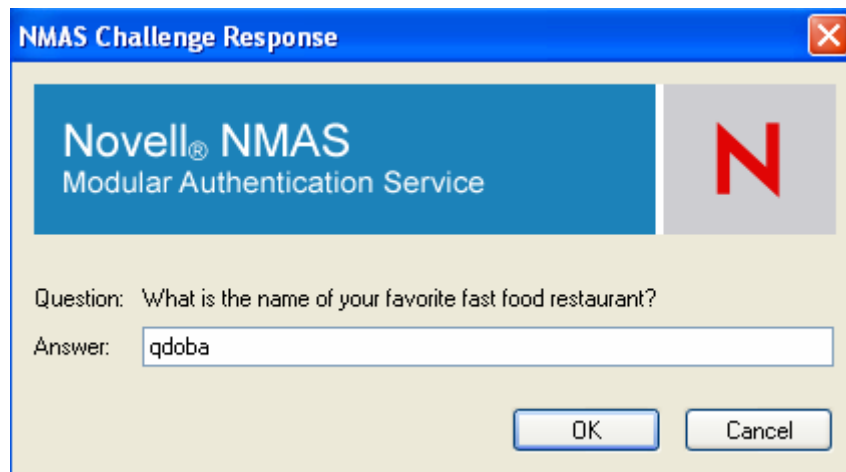
NMAS Challenge Response

Novell® NMAS
Modular Authentication Service

Question: What is your favorite color?

Answer:

OK Cancel



NMAS Challenge Response

Novell® NMAS
Modular Authentication Service

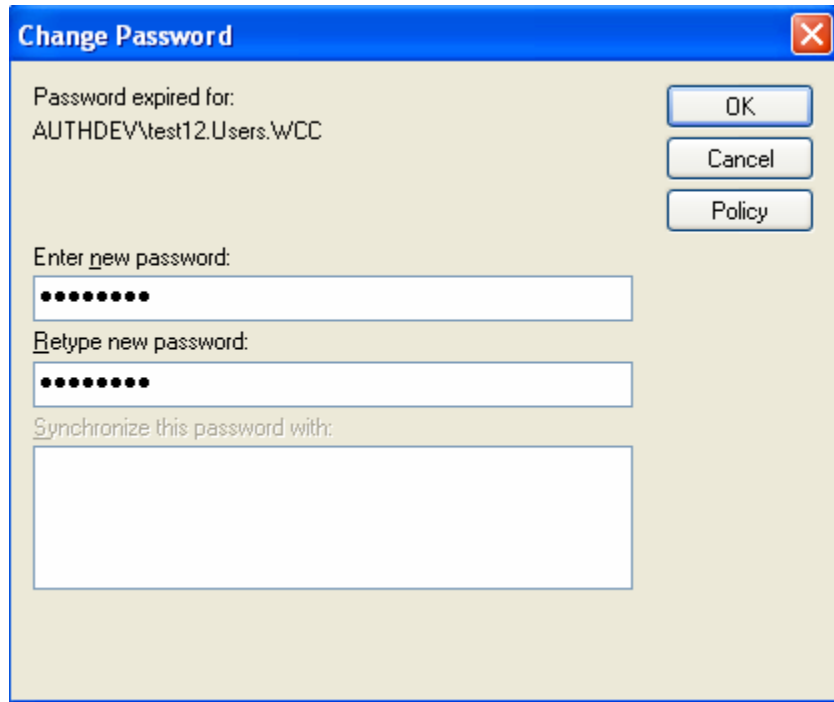
Question: What is the name of your favorite fast food restaurant?

Answer:

OK Cancel

Student Network Login Quick Guide

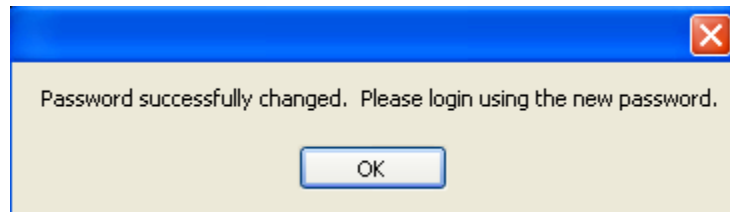
4. Upon successfully answering the three challenge questions, the Change Password window will appear. Enter a new password and retype the new password and click **OK**.



The 'Change Password' dialog box has a blue title bar with a close button (X) in the top right corner. The main area is light beige. It contains the following elements:

- Text: 'Password expired for: AUTHDEV\test12.Users.WCC'
- Buttons: 'OK', 'Cancel', and 'Policy' are stacked vertically on the right side.
- Text: 'Enter new password:' followed by a text input field containing ten black dots.
- Text: 'Retype new password:' followed by a text input field containing ten black dots.
- Text: 'Synchronize this password with:' followed by a larger, empty text input field.

5. You will receive notification that you successfully changed your password. Click **OK** and log into the network with your username and the new password.



The notification dialog box has a blue title bar with a close button (X) in the top right corner. The main area is light beige. It contains the following elements:

- Text: 'Password successfully changed. Please login using the new password.'
- Button: 'OK' is centered at the bottom.

Note: If you provide any invalid challenge responses, you will receive the following error message.



The 'NMAAS Error Login' dialog box has a blue title bar with a close button (X) in the top right corner. The main area is light beige. It contains the following elements:

- Text: 'NMAAS: protocol error', 'Unable to Login using Challenge Response', and 'See your administrator' are stacked vertically.
- Button: 'OK' is centered at the bottom.